

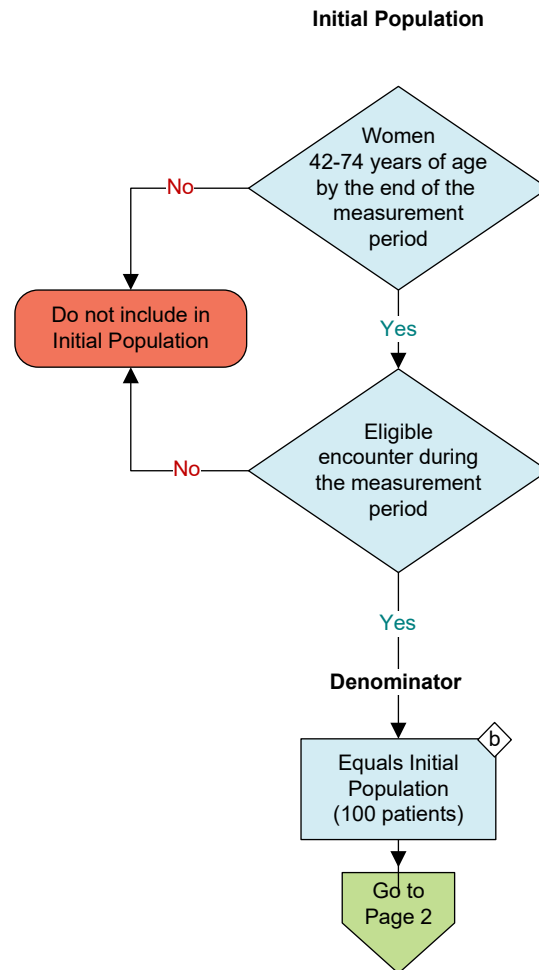
2026 eCQM Flow
eCQM Identifier: CMS125v14

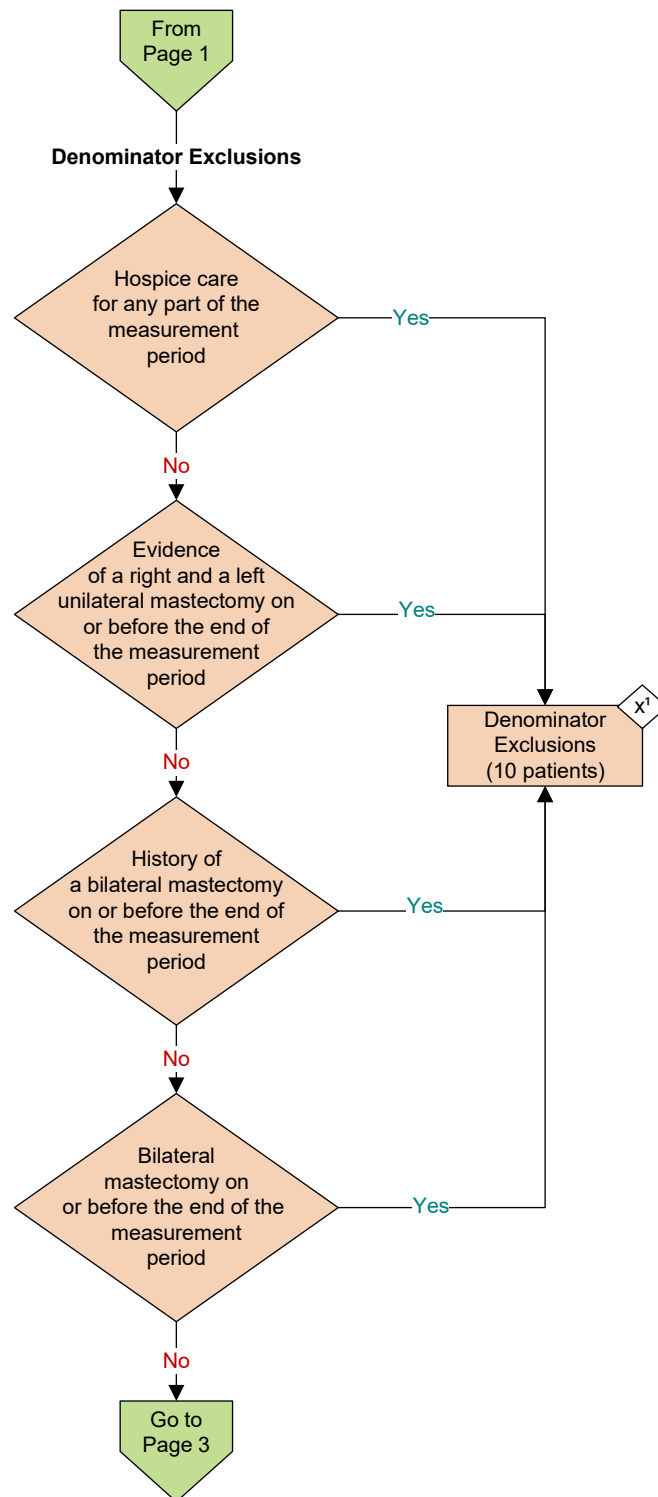
NOTE: This flow diagram represents an overview of population criteria requirements. **Refer to the eCQM specification for a complete list of data elements included in this measure and required for submission.**

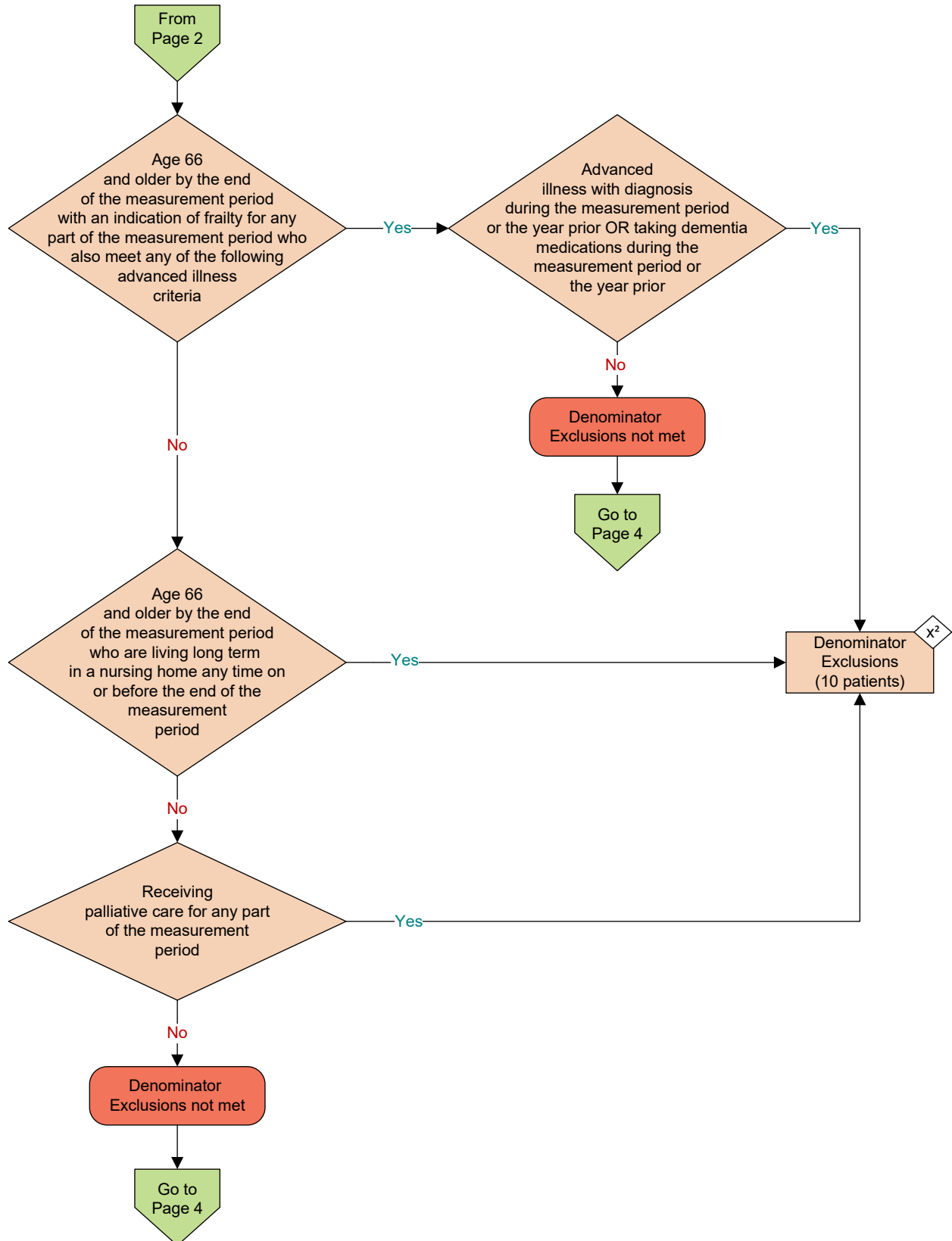
Breast Cancer Screening

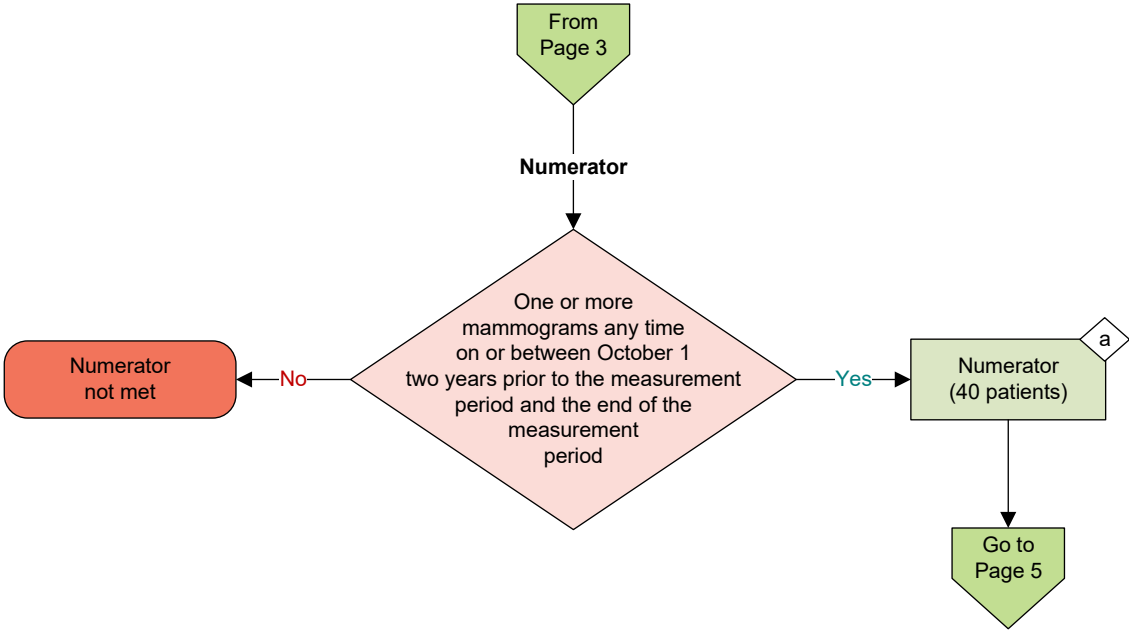
Percentage of women 40-74 years of age who had a mammogram to screen for breast cancer in the 27 months prior to the end of the measurement period

This eCQM is a patient-based measure

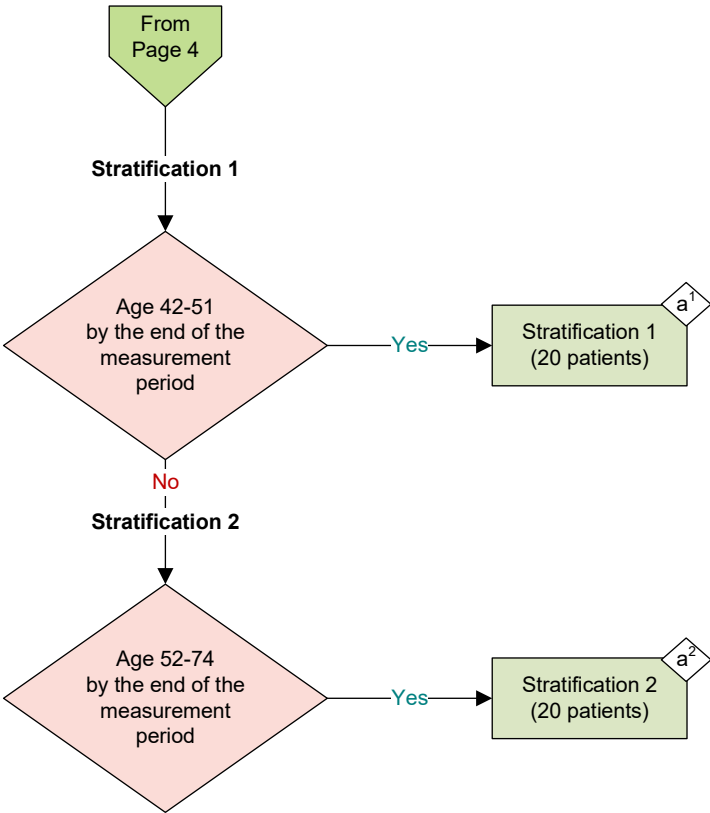








Sample Calculation		
Performance Rate =		
Numerator (a = 40 patients)		40
Denominator (b = 100 patients) - Denominator Exclusions (x ¹ + x ² = 20 patients)	=	$\frac{40}{80} = 50\%$



Sample Calculation	
Performance Rate =	
Numerator (a = 40 patients)	$= \frac{40}{80} = 50\%$
Denominator (b = 100 patients) – Denominator Exclusions ($x^1 + x^2 = 20$ patients)	
Stratification 1 of Performance Rate =	
Numerator ($a^1 = 20$ patients)	$= \frac{20}{80} = 25\%$
Denominator (b = 100 patients) – Denominator Exclusions ($x^1 + x^2 = 20$ patients)	
Stratification 2 of Performance Rate =	
Numerator ($a^2 = 20$ patients)	$= \frac{20}{80} = 25\%$
Denominator (b = 100 patients) – Denominator Exclusions ($x^1 + x^2 = 20$ patients)	

eCQM Identifier: CMS125v14 eCQM
eCQM Title: Breast Cancer Screening

NOTE: This flow diagram represents an overview of population criteria requirements. Refer to the eCQM specification for a complete list of data elements included in this measure and required for submission.

Description: Percentage of women 40 to 74 years of age who had a mammogram to screen for breast cancer in the 27 months prior to the end of the measurement period.

This eCQM is a patient-based measure.

eCQM Flow Narrative

Initial Population

Start by identifying the Initial Population, which includes women 42 to 74 years of age by the end of the measurement period with an eligible encounter during the measurement period.

Denominator

The Denominator equals the Initial Population. In the sample calculation provided at the end of the eCQM flow, the Denominator is equal to 100 patients.

Denominator Exclusions

The Denominator Exclusions criteria identify a subset of the Denominator population by excluding women who are in hospice care for any part of the measurement period; women for whom there is evidence of a right and a left unilateral mastectomy on or before the end of the measurement period; women who have a history of a bilateral mastectomy or a bilateral mastectomy on or before the end of the measurement period; women age 66 and older by the end of the measurement period with an indication of frailty for any part of the measurement period who also have an advanced illness with diagnosis during the measurement period or the year prior, or are taking dementia medications during the measurement period or the year prior; women age 66 and older by the end of the measurement period who are living long term in a nursing home any time on or before the end of the measurement period; and women who are receiving palliative care for any part of the measurement period. In the sample calculation provided at the end of the eCQM flow, the Denominator Exclusions are equal to 20 patients.

Numerator

The Numerator criteria identify a subset of the Denominator population (that did not meet the Denominator Exclusions criteria) by including women who had one or more mammograms any time on or between October 1 two years prior to measurement period and the end of the measurement period. In the sample calculation provided at the end of the eCQM flow, the Numerator is equal to 40 patients.

Stratification 1

There are two strata for reporting separately by age group. Stratification 1 includes patients 42 to 51 years of age by the end of the measurement period. In the sample calculation provided at the end of the eCQM flow, Stratification 1 is equal to 20 patients.

Stratification 2

There are two strata for reporting separately by age group. Stratification 2 includes patients 52 to 74 years of age by the end of the measurement period. In the sample calculation provided at the end of the eCQM flow, Stratification 2 is equal to 20 patients.

Sample Calculation

A sample calculation is provided to help determine how the measure performance rate is derived. The measure performance rate is calculated by dividing the Numerator (total equals 40 patients) by the difference between the Denominator (total equals 100 patients) and the Denominator Exclusions (total equals 20 patients), which is equal to a score of 50 percent. Stratification 1 of the performance rate is calculated by dividing the Numerator of Stratification 1 (total equals 20 patients) by the difference between the Denominator (total equals 100 patients) and the Denominator Exclusions (total equals 20 patients), which is equal to a score of 25 percent. Stratification 2 of the performance rate is calculated by dividing the Numerator of Stratification 2 (total equals 20 patients) by the difference between the Denominator (total equals 100 patients) and the Denominator Exclusions (total equals 20 patients), which is equal to a score of 25 percent.