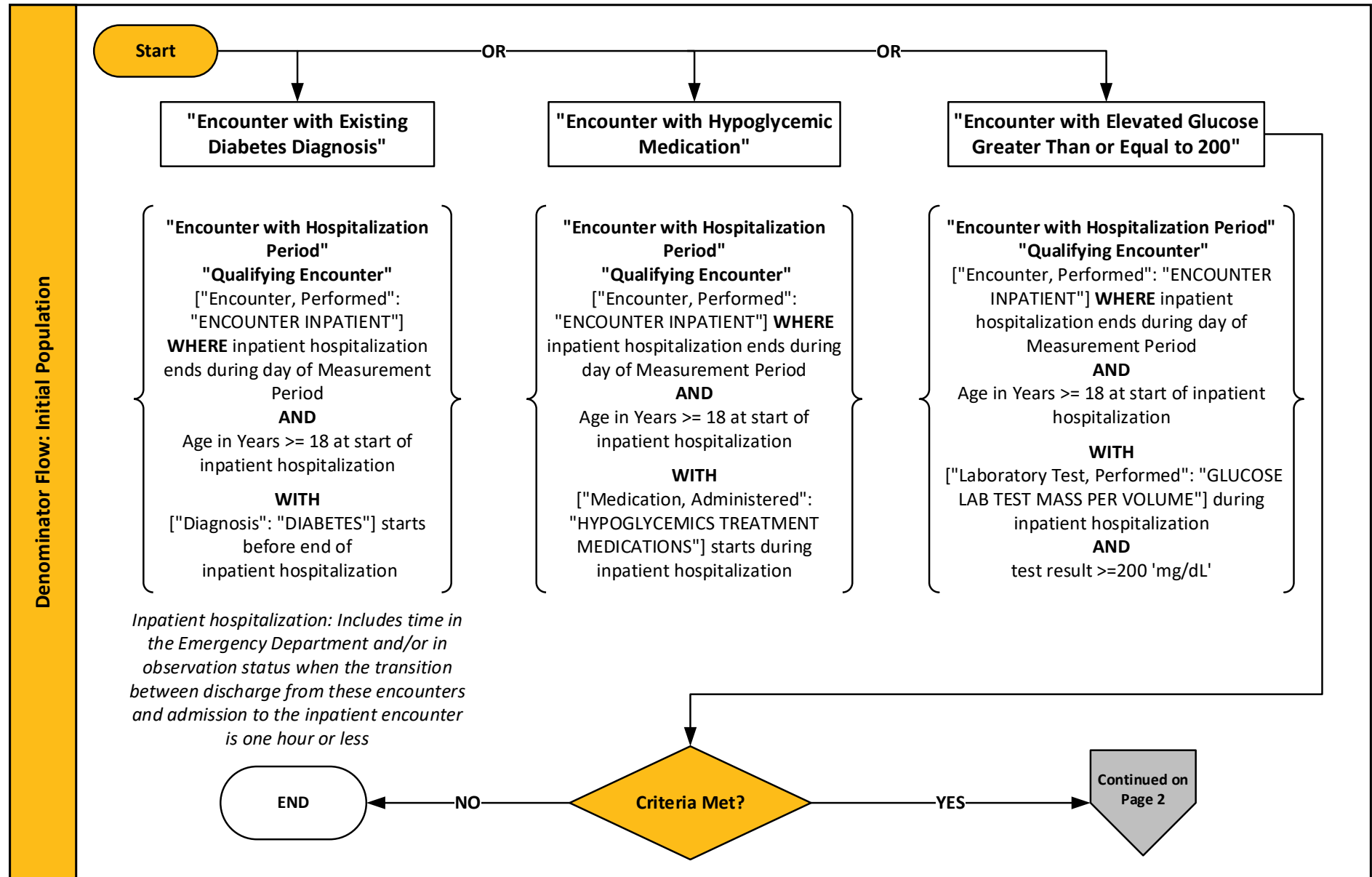


2026 eCQM Flow – CMS871v5: Hospital Harm - Severe Hyperglycemia (HH-Hyper)* CBE# 3533e

*This flow diagram represents an overview of population criteria requirements. Please refer to the eCQM measure specification for a complete list of definitions, direct reference codes, data or timing elements included in this measure and required for submission.

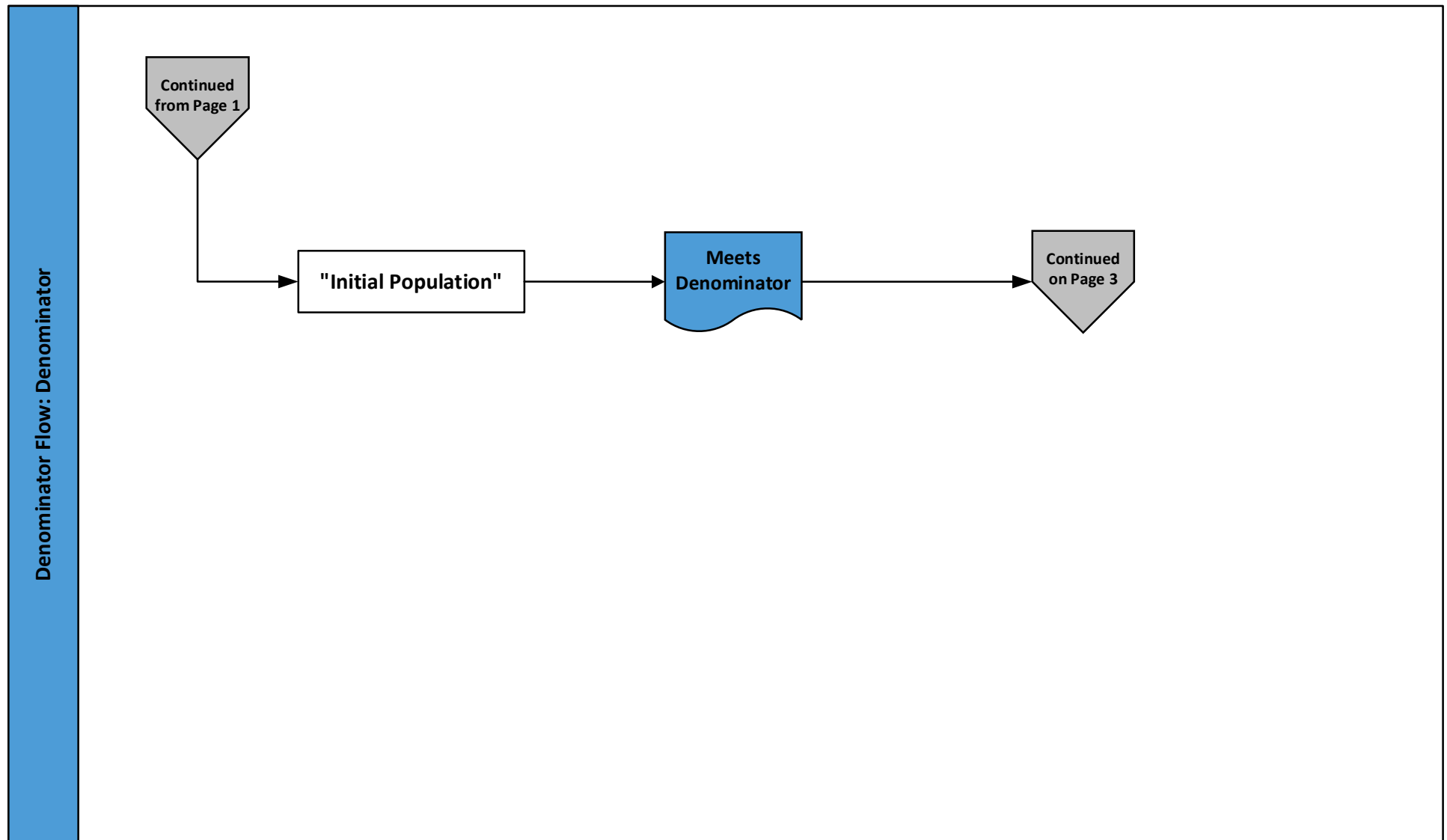
Measure Flow Diagram



2026 eCQM Flow – CMS871v5: Hospital Harm - Severe Hyperglycemia (HH-Hyper)* CBE# 3533e

**This flow diagram represents an overview of population criteria requirements. Please refer to the eCQM measure specification for a complete list of definitions, direct reference codes, data or timing elements included in this measure and required for submission.*

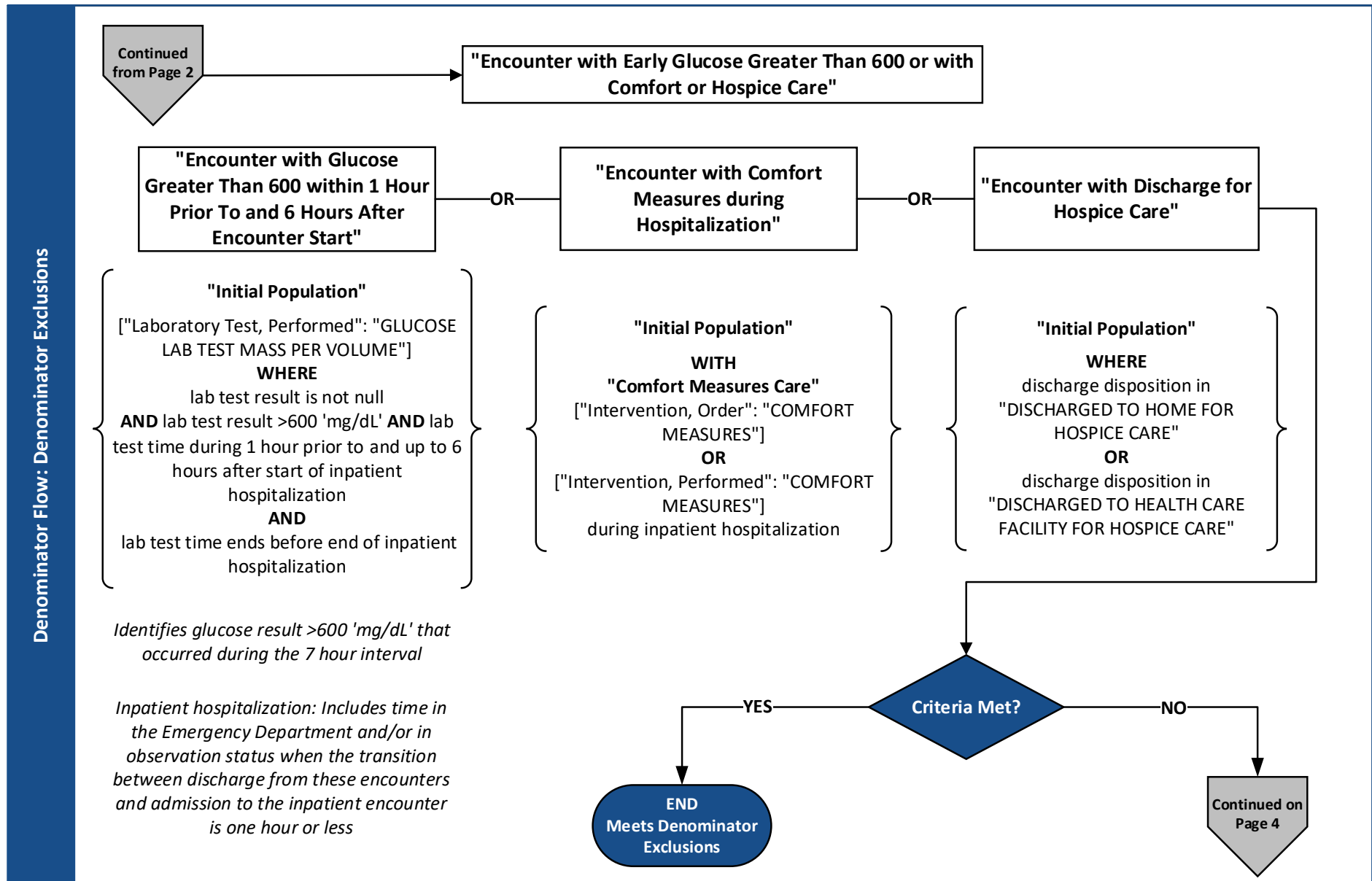
Measure Flow Diagram (Continued)



2026 eCQM Flow – CMS871v5: Hospital Harm - Severe Hyperglycemia (HH-Hyper)* CBE# 3533e

*This flow diagram represents an overview of population criteria requirements. Please refer to the eCQM measure specification for a complete list of definitions, direct reference codes, data or timing elements included in this measure and required for submission.

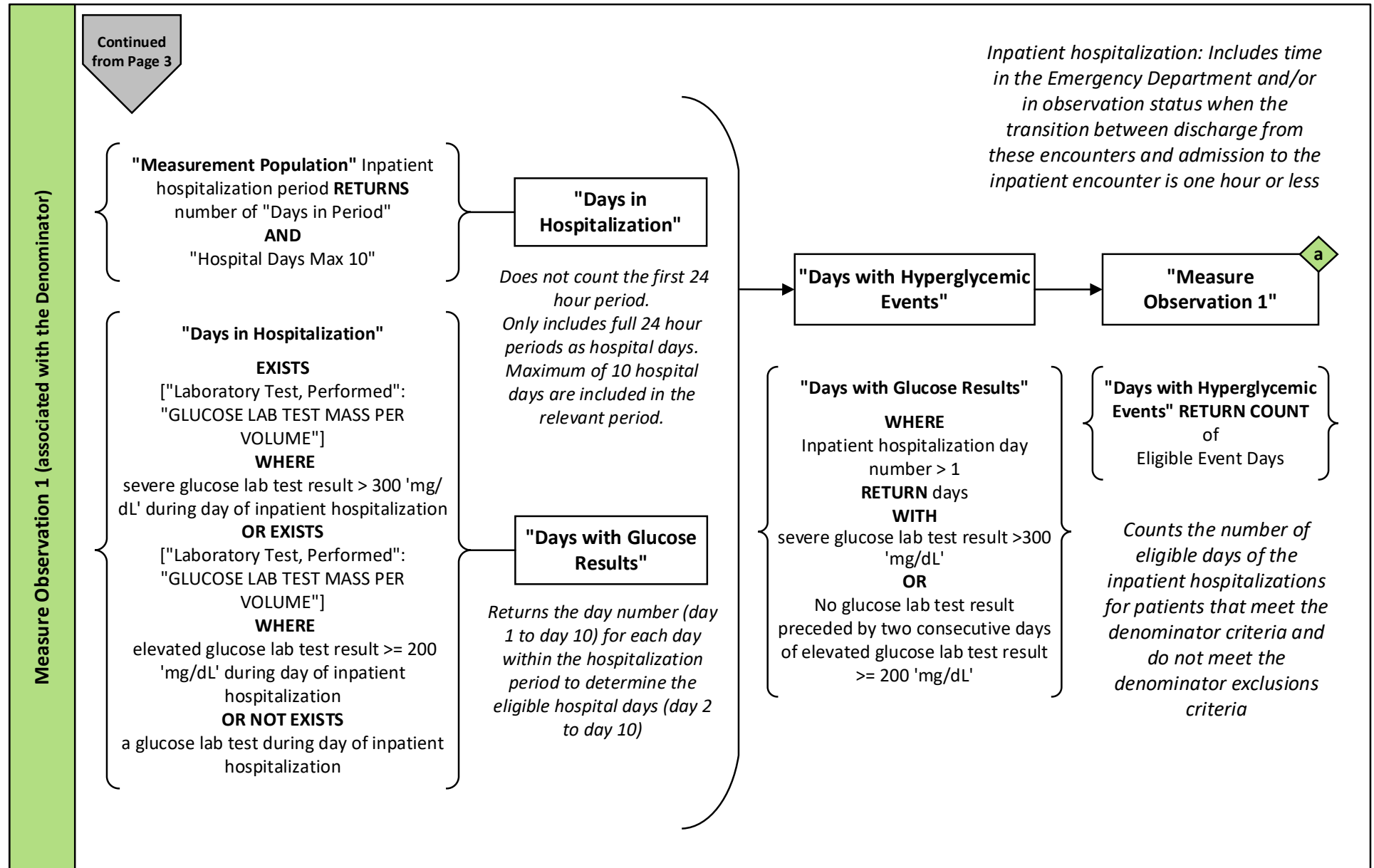
Measure Flow Diagram (Continued)



2026 eCQM Flow – CMS871v5: Hospital Harm - Severe Hyperglycemia (HH-Hyper)* CBE# 3533e

*This flow diagram represents an overview of population criteria requirements. Please refer to the eCQM measure specification for a complete list of definitions, direct reference codes, data or timing elements included in this measure and required for submission.

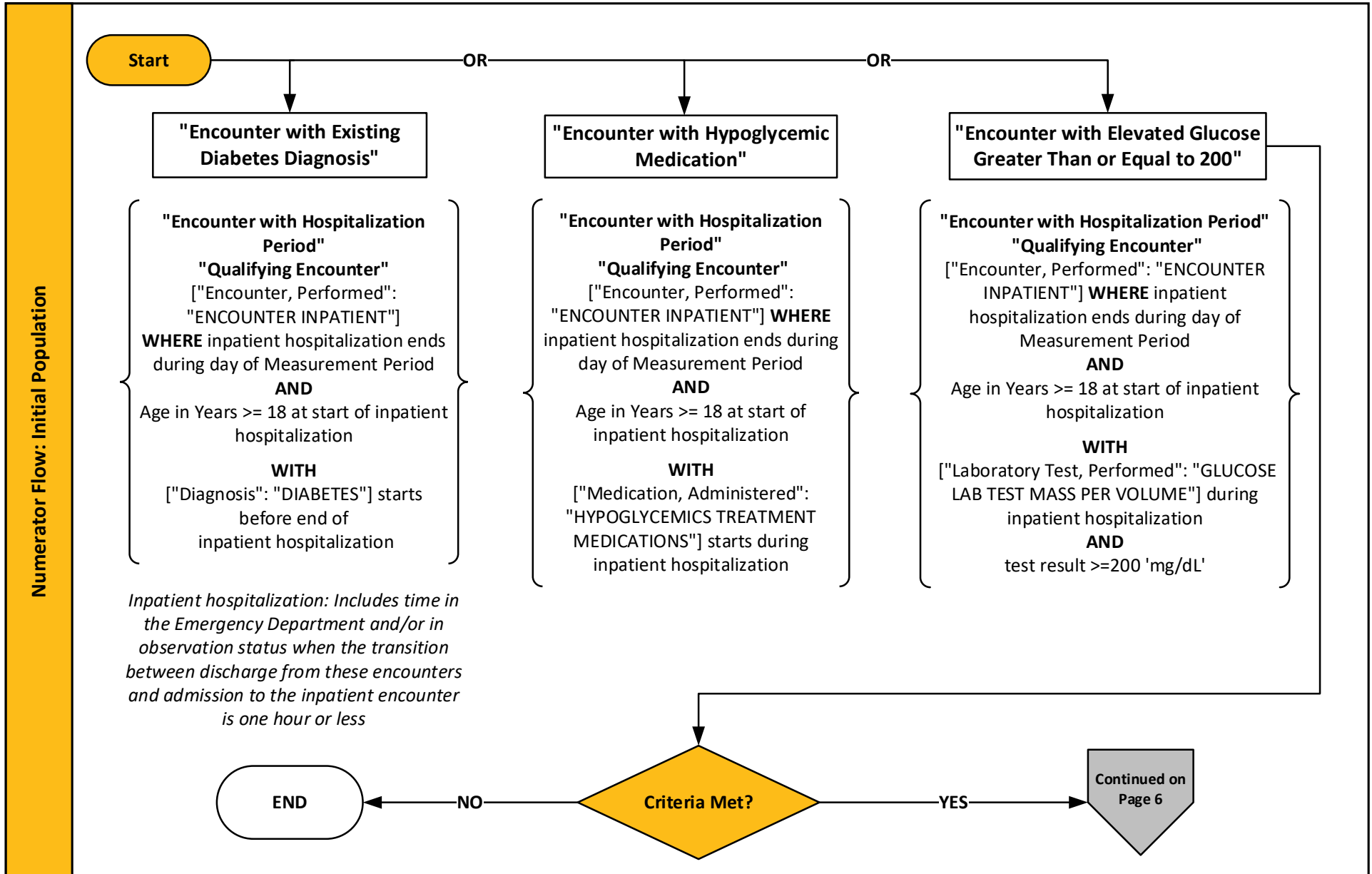
Measure Flow Diagram (Continued)



2026 eCQM Flow – CMS871v5: Hospital Harm - Severe Hyperglycemia (HH-Hyper)* CBE# 3533e

*This flow diagram represents an overview of population criteria requirements. Please refer to the eCQM measure specification for a complete list of definitions, direct reference codes, data or timing elements included in this measure and required for submission.

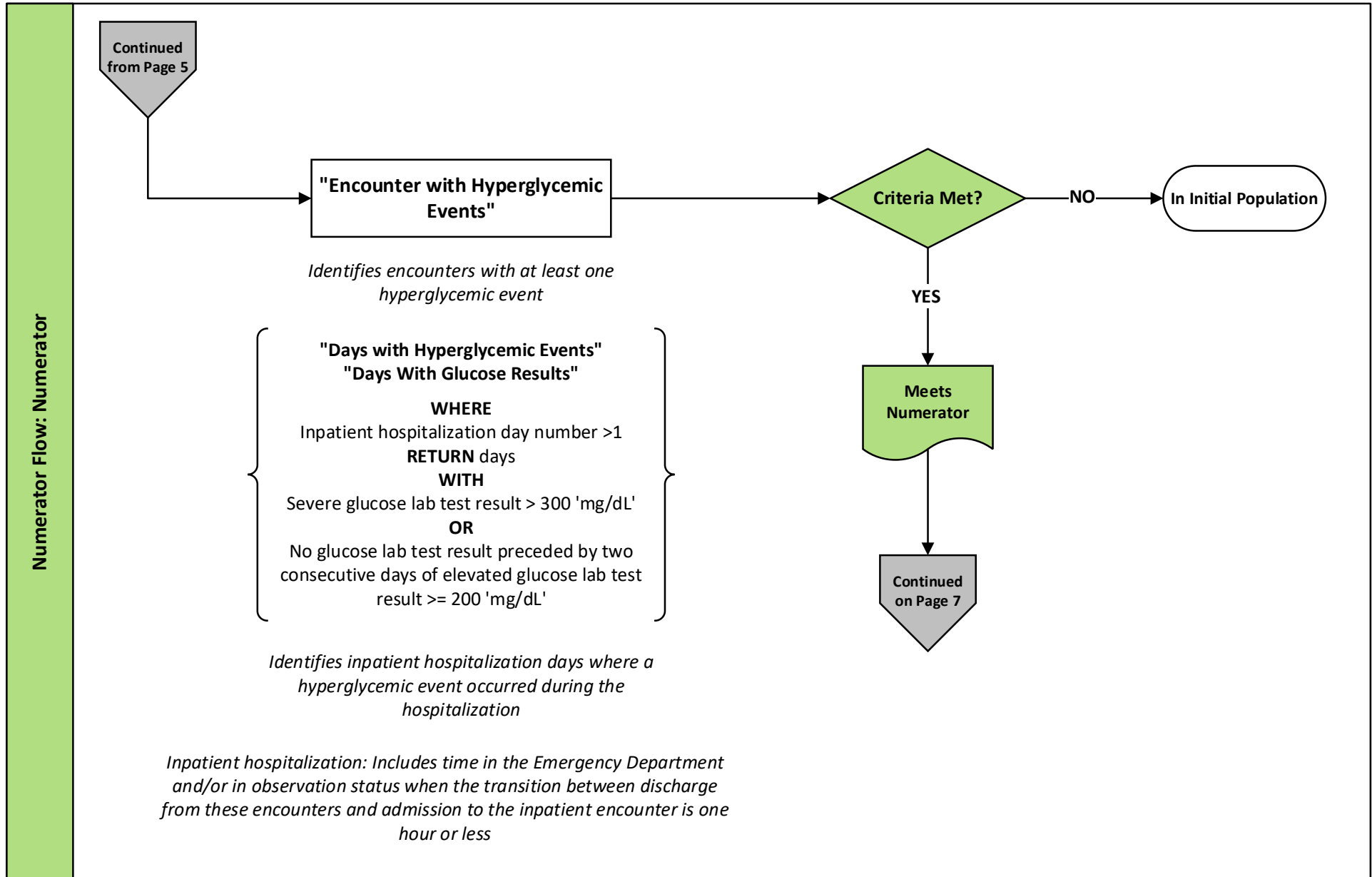
Measure Flow Diagram (Continued)



2026 eCQM Flow – CMS871v5: Hospital Harm - Severe Hyperglycemia (HH-Hyper)* CBE# 3533e

*This flow diagram represents an overview of population criteria requirements. Please refer to the eCQM measure specification for a complete list of definitions, direct reference codes, data or timing elements included in this measure and required for submission.

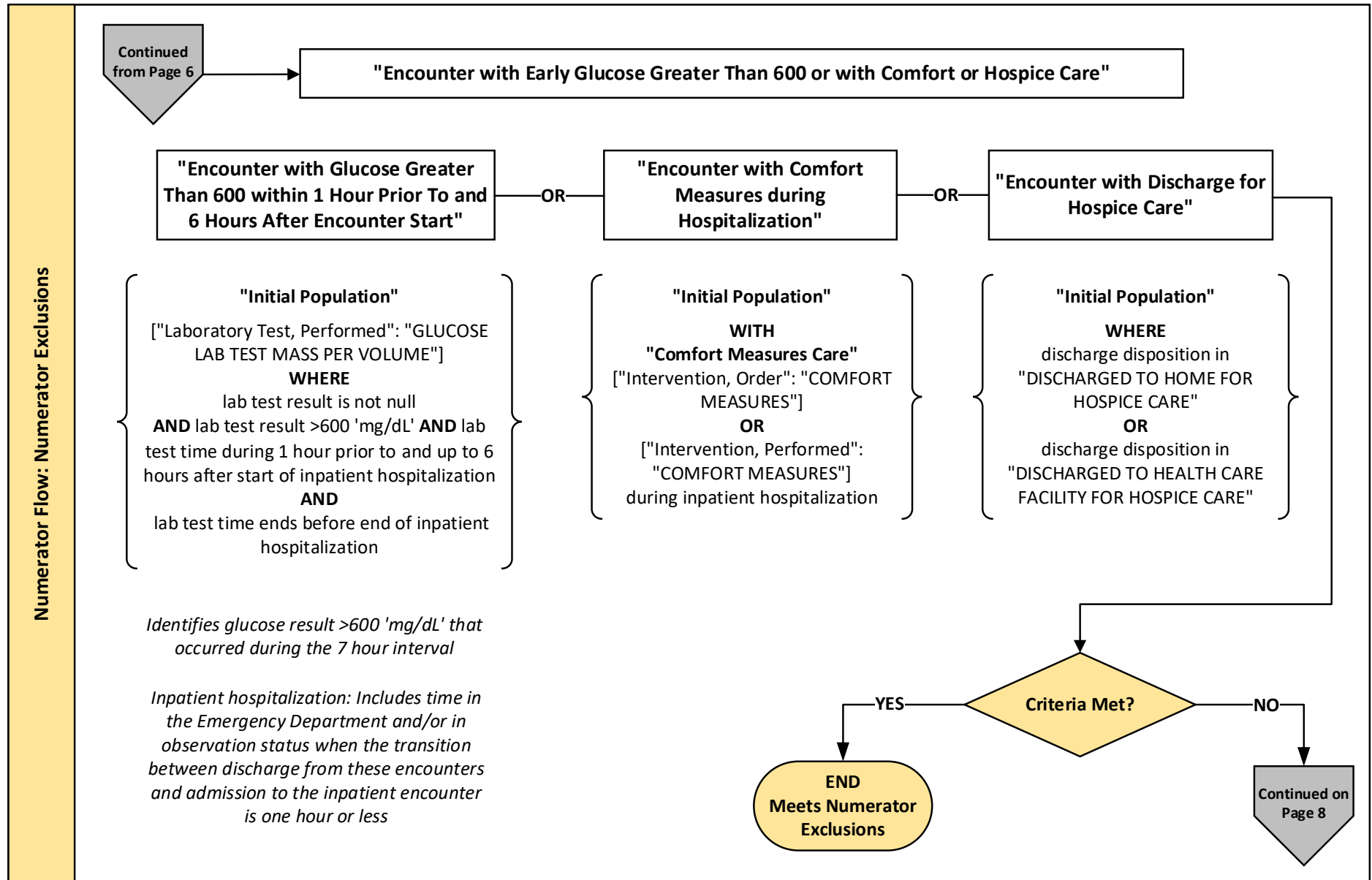
Measure Flow Diagram (Continued)



2026 eCQM Flow – CMS871v5: Hospital Harm - Severe Hyperglycemia (HH-Hyper)* CBE# 3533e

*This flow diagram represents an overview of population criteria requirements. Please refer to the eCQM measure specification for a complete list of definitions, direct reference codes, data or timing elements included in this measure and required for submission.

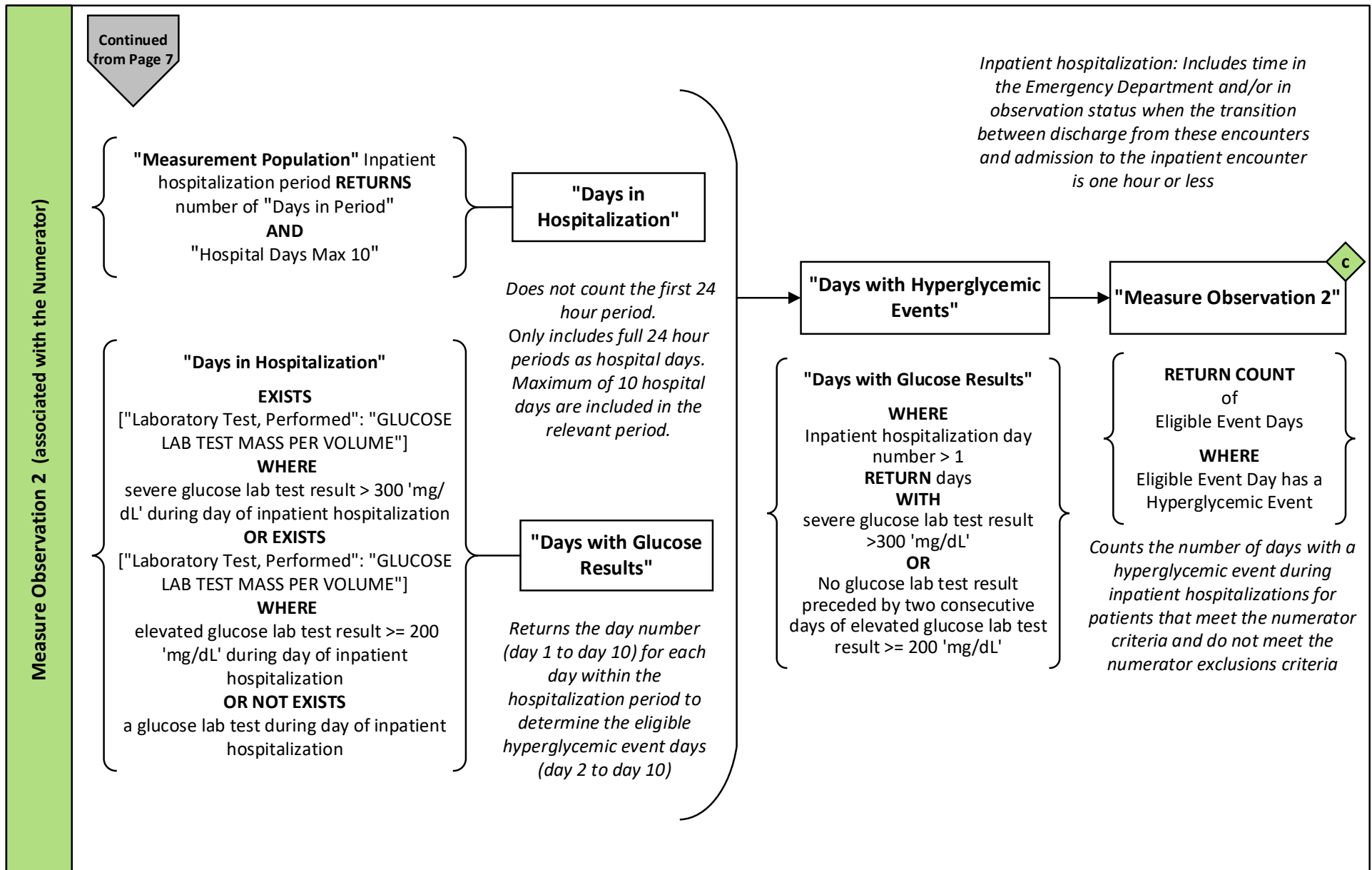
Measure Flow Diagram (Continued)



2026 eCQM Flow – CMS871v5: Hospital Harm - Severe Hyperglycemia (HH-Hyper)* CBE# 3533e

*This flow diagram represents an overview of population criteria requirements. Please refer to the eCQM measure specification for a complete list of definitions, direct reference codes, data or timing elements included in this measure and required for submission.

Measure Flow Diagram (Continued)



2026 eCQM Flow – **CMS871v5: Hospital Harm - Severe Hyperglycemia (HH-Hyper)*** CBE# 3533e

**This flow diagram represents an overview of population criteria requirements. Please refer to the eCQM measure specification for a complete list of definitions, direct reference codes, data or timing elements included in this measure and required for submission.*

Measure Flow Diagram (Continued)

Sample Calculation		
<div><div>Ratio =</div><div><div>Measure Observations 2 (c = 100)</div><div>Measure Observations 1 (a = 550)</div></div><div>= 0.182</div></div>		

2026 eCQM Flow – CMS871v5: Hospital Harm - Severe Hyperglycemia (HH-Hyper)* CBE# 3533e

**This flow diagram represents an overview of population criteria requirements. Please refer to the eCQM measure specification for a complete list of definitions, direct reference codes, data or timing elements included in this measure and required for submission.*

Measure Flow Narrative: Denominator Flow

The measure flow diagram on the preceding pages illustrates the steps to determine the population criteria for this measure.

Measure Description	This measure assesses the number of inpatient hospital days for patients age 18 and older with a hyperglycemic event (harm) per the total qualifying inpatient hospital days for that encounter
Denominator Flow: Initial Population	Start by identifying the initial population criteria as inpatient hospitalizations for patients age 18 and older that end during the measurement period, as well as either: <ul style="list-style-type: none">• A diagnosis of diabetes that starts before the end of the encounter; or• Administration of at least one dose of insulin or any hypoglycemic medication that starts during the encounter; or• Presence of at least one glucose value ≥ 200 mg/dL at any time during the encounter
Denominator Flow: Denominator	The denominator is equal to the Initial Population
Denominator Flow: Denominator Exclusions	The denominator exclusion criteria identify a subset of the denominator population by excluding inpatient hospitalizations for patients: <ul style="list-style-type: none">• With a glucose result of >600 mg/dL anytime between 1 hour prior to the start of the encounter to 6 hours after the start of the encounter• Who have comfort care measures ordered or provided during the encounter• Who have a discharge disposition to hospice care at home or in a health care facility

2026 eCQM Flow – **CMS871v5: Hospital Harm - Severe Hyperglycemia (HH-Hyper)*** CBE# 3533e

**This flow diagram represents an overview of population criteria requirements. Please refer to the eCQM measure specification for a complete list of definitions, direct reference codes, data or timing elements included in this measure and required for submission.*

Measure Flow Narrative: Denominator Flow (Continued)

The measure flow diagram on the preceding pages illustrates the steps to determine the population criteria for this measure.

Denominator Flow: Measure Observation 1	Measure Observation 1, associated with the denominator of the ratio: The total number of eligible days of the inpatient hospitalization which match the initial population/denominator criteria and did not meet the denominator exclusions criteria
-----------------------------------------------	------------------------------------------------------------------------------------------------------------------------------------------------------------------------------------------------------------------------------------------------------

2026 eCQM Flow – CMS871v5: Hospital Harm - Severe Hyperglycemia (HH-Hyper)* CBE# 3533e

**This flow diagram represents an overview of population criteria requirements. Please refer to the eCQM measure specification for a complete list of definitions, direct reference codes, data or timing elements included in this measure and required for submission.*

Measure Flow Narrative: Numerator Flow

The measure flow diagram on the preceding pages illustrates the steps to determine the population criteria for this measure.

Numerator Flow: Initial Population	<p>Start by identifying the initial population criteria as inpatient hospitalizations for patients age 18 and older that end during the measurement period, as well as either:</p> <ul style="list-style-type: none"> • A diagnosis of diabetes that starts before the end of the encounter; or • Administration of at least one dose of insulin or any hypoglycemic medication that starts during the encounter; or • Presence of at least one glucose value ≥ 200 mg/dL at any time during the encounter
Numerator Flow: Numerator	<p>The numerator criteria identify a subset of the initial population by including inpatient hospitalizations with a hyperglycemic event within the first 10 days of the encounter minus the first 24 hours, and minus the last period before discharge from the hospital if less than 24 hours</p> <p>A hyperglycemic event is defined as:</p> <ul style="list-style-type: none"> • A day with at least one glucose value >300 mg/dL; OR • A day where a glucose test and result was not found, and it was immediately preceded by two contiguous, consecutive days where at least one glucose value during each of the two days was ≥ 200 mg/dL
Numerator Flow: Numerator Exclusions	<p>The numerator exclusion criteria identify a subset of the numerator population by excluding inpatient hospitalizations for patients:</p> <ul style="list-style-type: none"> • With a glucose result of >600 mg/dL anytime between 1 hour prior to the start of the encounter to 6 hours after the start of the encounter • Who have comfort care measures ordered or provided during the encounter • Who have a discharge disposition to hospice care at home or in a health care facility
Numerator Flow: Measure Observation 2	<p>Measure Observation 2, associated with the numerator of the ratio: The total number of hyperglycemic days during the inpatient hospitalization that meet the numerator criteria and did not meet the numerator exclusion criteria. Days with a hyperglycemic event are defined as:</p> <ul style="list-style-type: none"> • All days with a glucose level >300 mg/dL (except those occurring in the first 24-hour period after admission to the hospital (including the emergency department and observation)) <p>OR</p> <ul style="list-style-type: none"> • All days where a glucose was not measured, and it was immediately preceded by two contiguous, consecutive days where at least one glucose value during each of the two days was ≥ 200 mg/dL.