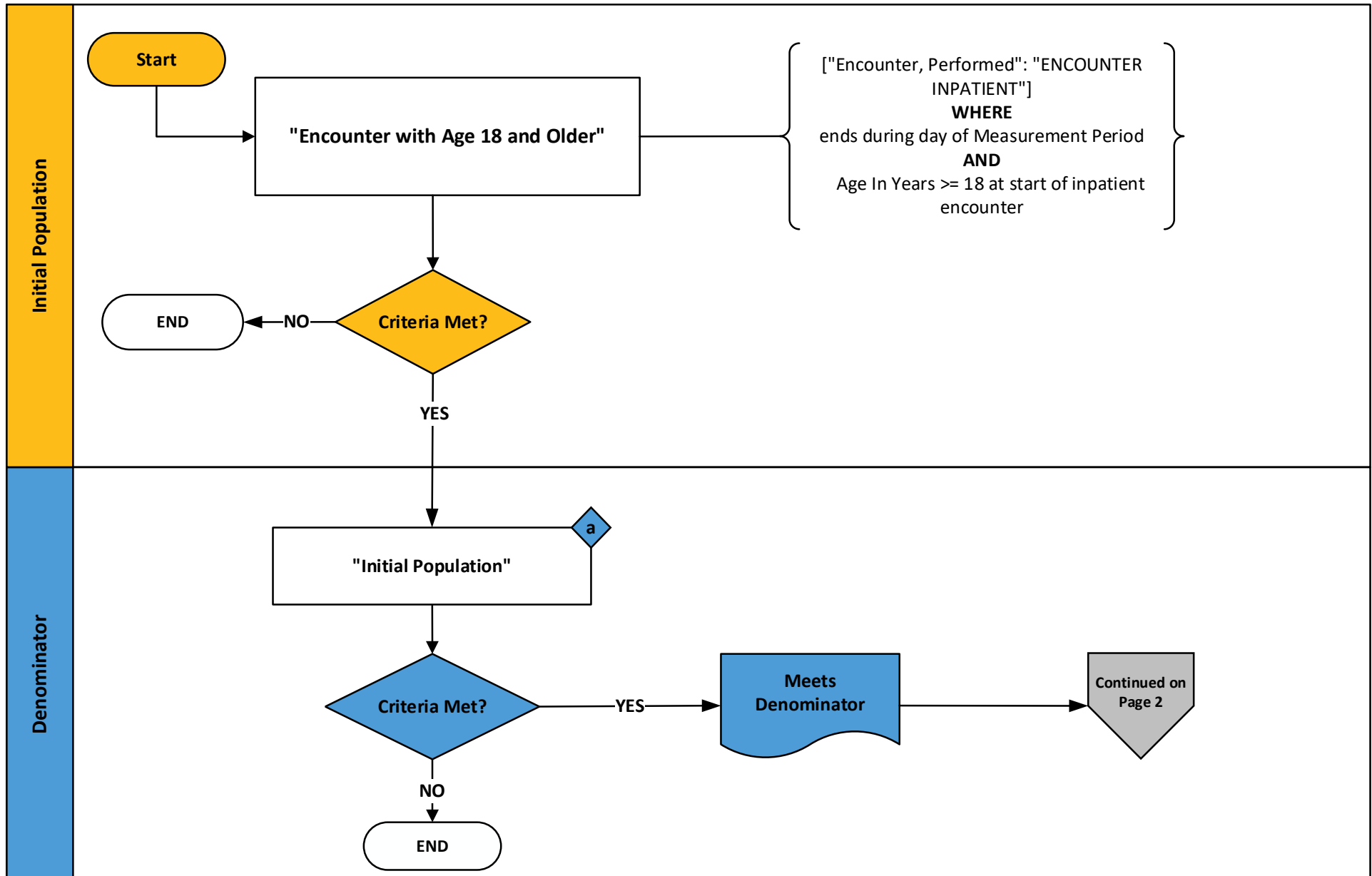


2026 eCQM Flow – CMS826v3: Hospital Harm - Pressure Injury (HH-PI)* CBE# 3498e

**This flow diagram represents an overview of population criteria requirements. Please refer to the eCQM measure specification for a complete list of definitions, direct reference codes, data or timing elements included in this measure and required for submission.*

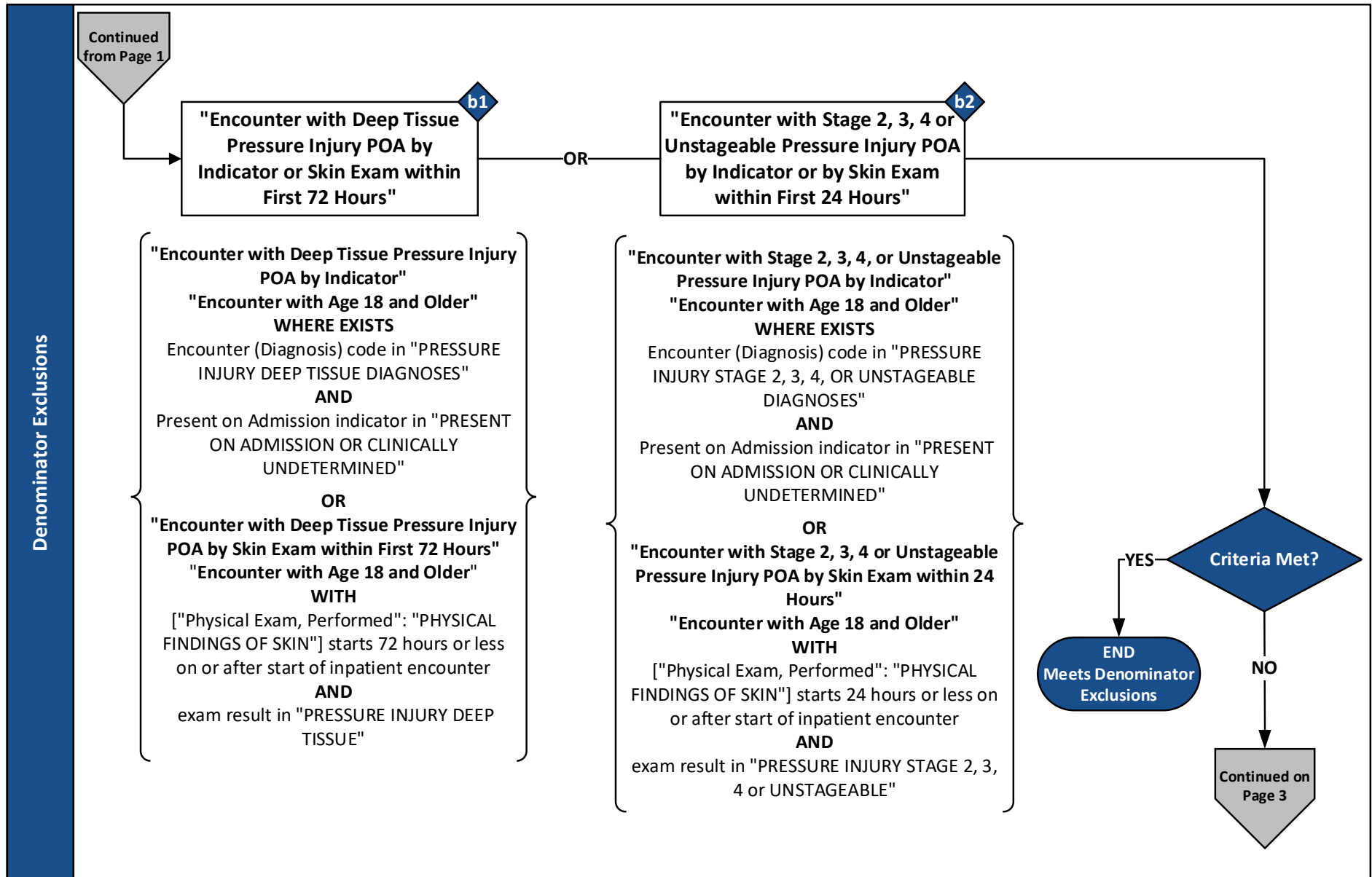
Measure Flow Diagram



2026 eCQM Flow – CMS826v3: Hospital Harm - Pressure Injury (HH-PI)* CBE# 3498e

**This flow diagram represents an overview of population criteria requirements. Please refer to the eCQM measure specification for a complete list of definitions, direct reference codes, data or timing elements included in this measure and required for submission.*

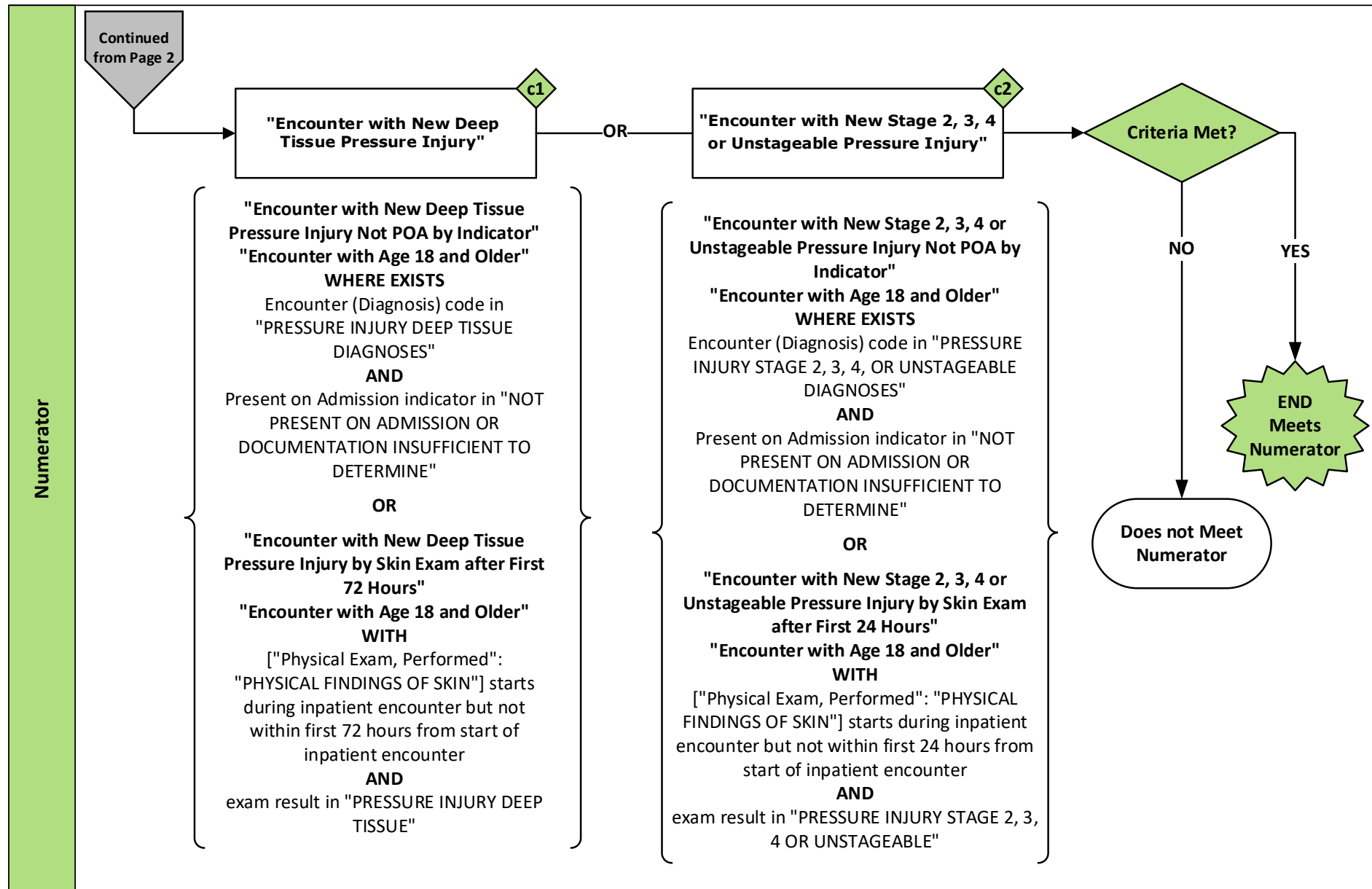
Measure Flow Diagram (Continued)



2026 eCQM Flow – CMS826v3: Hospital Harm - Pressure Injury (HH-PI)* CBE# 3498e

**This flow diagram represents an overview of population criteria requirements. Please refer to the eCQM measure specification for a complete list of definitions, direct reference codes, data or timing elements included in this measure and required for submission.*

Measure Flow Diagram (Continued)



2026 eCQM Flow – **CMS826v3: Hospital Harm - Pressure Injury (HH-PI)*** CBE# 3498e

**This flow diagram represents an overview of population criteria requirements. Please refer to the eCQM measure specification for a complete list of definitions, direct reference codes, data or timing elements included in this measure and required for submission.*

Measure Flow Diagram (Continued)

Sample Calculation		
Performance Rate =	<div>Numerator (c1 + c2 = 20)</div> <div>Denominator (a = 100) – Denominator Exclusions (b1 + b2 = 20)</div>	= 25 %

2026 eCQM Flow – CMS826v3: Hospital Harm - Pressure Injury (HH-PI)* CBE# 3498e

**This flow diagram represents an overview of population criteria requirements. Please refer to the eCQM measure specification for a complete list of definitions, direct reference codes, data or timing elements included in this measure and required for submission.*

Measure Flow Narrative

The measure flow diagram on the preceding pages illustrates the steps to determine the population criteria for this measure.

Measure Description	The measure assesses the number of inpatient hospitalizations for patients aged 18 and older who suffer the harm of developing a new stage 2, stage 3, stage 4, deep tissue, or unstageable pressure injury
Initial Population	Start by identifying the initial population criteria as inpatient hospitalizations that end during the measurement period for patients aged 18 and older
Denominator	The denominator equals the initial population
Denominator Exclusions	<p>The denominator exclusions criteria identify a subset of the denominator population by excluding inpatient hospitalizations for patients with any of the following:</p> <ul style="list-style-type: none">• A deep tissue pressure injury (DTPI) or stage 2, 3, 4, or unstageable pressure injury diagnosis present on admission as indicated by a present on admission indicator of Y or W• A DTPI found on exam 72 hours or less after the start of the encounter• A stage 2, 3, 4, or unstageable pressure injury found on exam 24 hours or less after the start of the encounter

2026 eCQM Flow – CMS826v3: Hospital Harm - Pressure Injury (HH-PI)* CBE# 3498e

**This flow diagram represents an overview of population criteria requirements. Please refer to the eCQM measure specification for a complete list of definitions, direct reference codes, data or timing elements included in this measure and required for submission.*

Measure Flow Narrative (Continued)

The measure flow diagram on the preceding pages illustrates the steps to determine the population criteria for this measure.

Numerator	<p>The numerator criteria identify a subset of the denominator population by including inpatient hospitalizations for patients with a new DTPI or stage 2, 3, 4, or unstageable pressure injury, as evidenced by any of the following:</p> <ul style="list-style-type: none">• A DTPI or stage 2, 3, 4, or unstageable pressure injury diagnosis not present on admission as indicated by a present on admission indicator of N or U• A DTPI found on exam greater than 72 hours after the start of the encounter• A stage 2, 3, 4 or unstageable pressure injury found on exam greater than 24 hours after the start of the encounter <p>Only one harm (new qualifying pressure injury) is counted per hospitalization.</p>
-----------	--