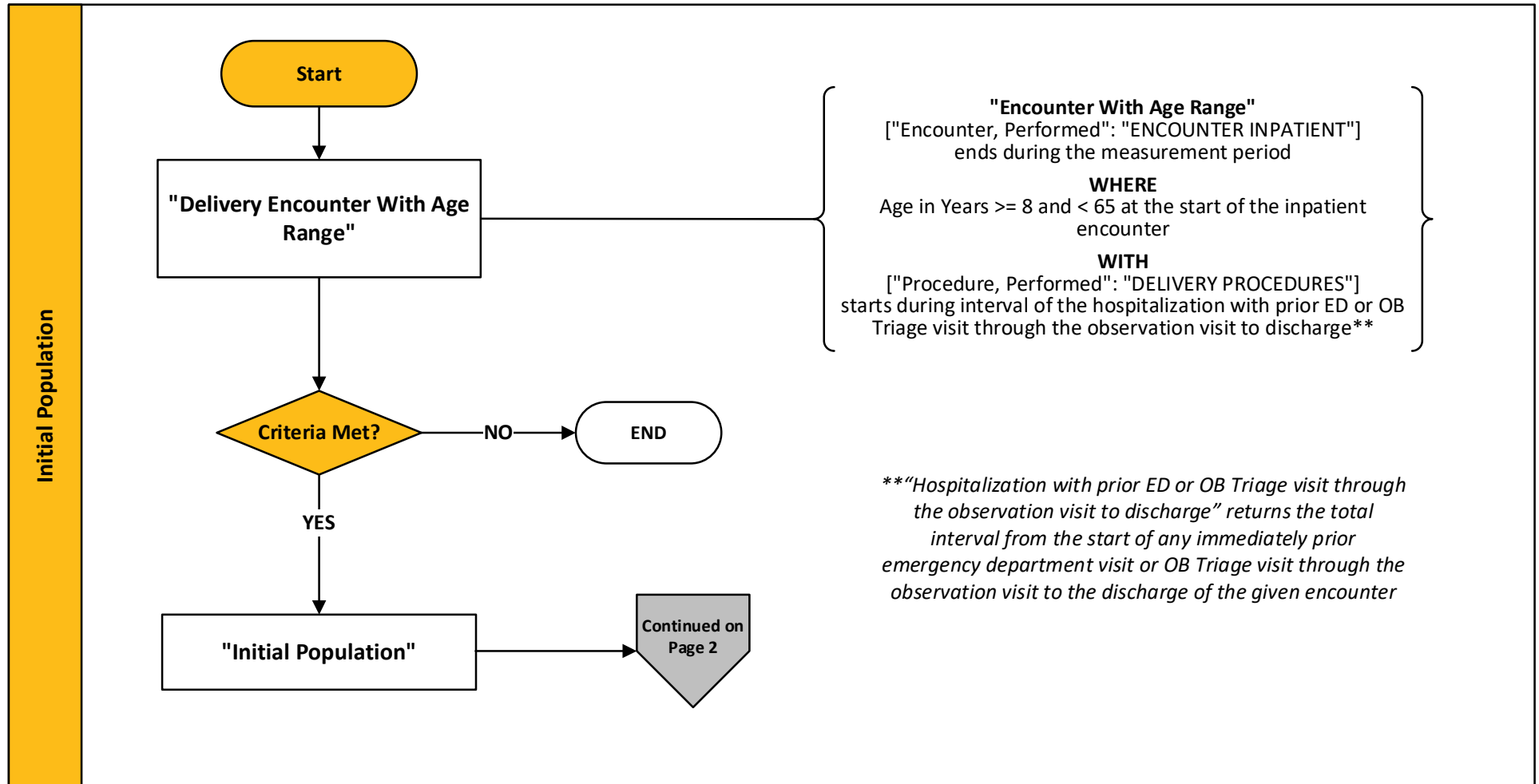


## 2026 eCQM Flow – CMS334v7: Cesarean Birth (PC-02)\* CBE# 0471e

*\*This flow diagram represents an overview of population criteria requirements. Please refer to the eCQM measure specification for a complete list of definitions, direct reference codes, data or timing elements included in this measure and required for submission.*

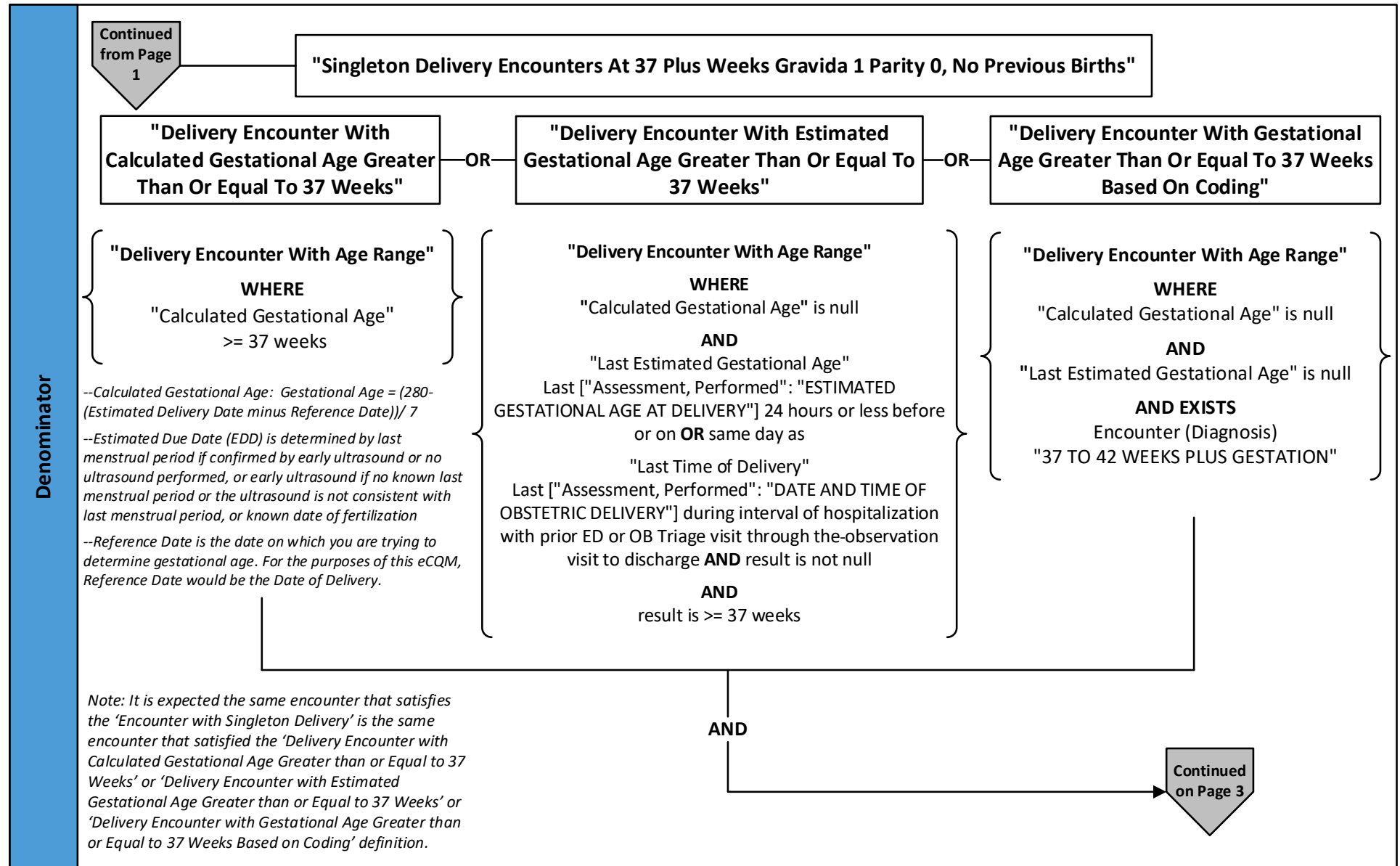
### Measure Flow Diagram



## 2026 eCQM Flow – CMS334v7: Cesarean Birth (PC-02)\* CBE# 0471e

\*This flow diagram represents an overview of population criteria requirements. Please refer to the eCQM measure specification for a complete list of definitions, direct reference codes, data or timing elements included in this measure and required for submission.

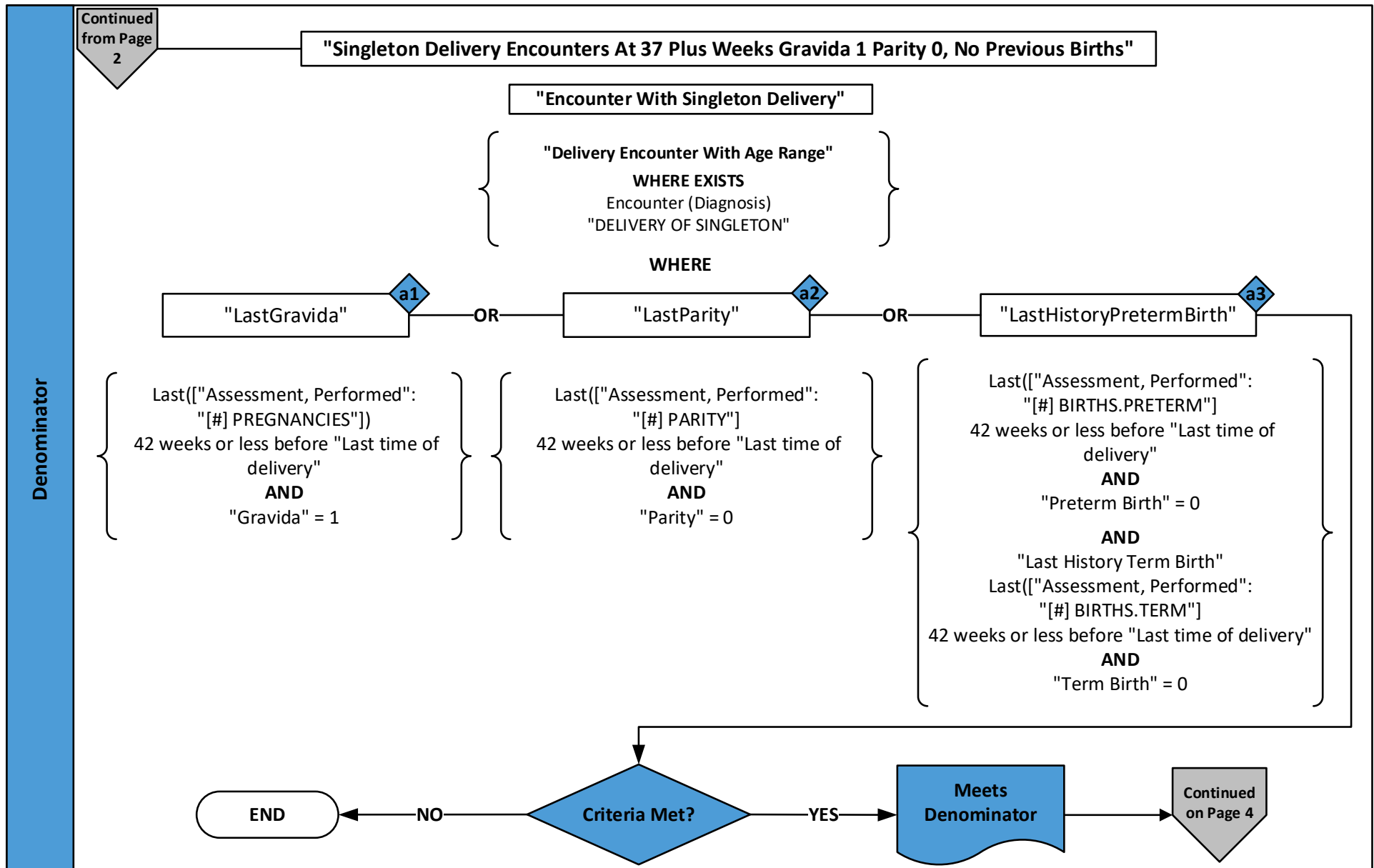
### Measure Flow Diagram (Continued)



## 2026 eCQM Flow – CMS334v7: Cesarean Birth (PC-02)\* CBE# 0471e

*\*This flow diagram represents an overview of population criteria requirements. Please refer to the eCQM measure specification for a complete list of definitions, direct reference codes, data or timing elements included in this measure and required for submission.*

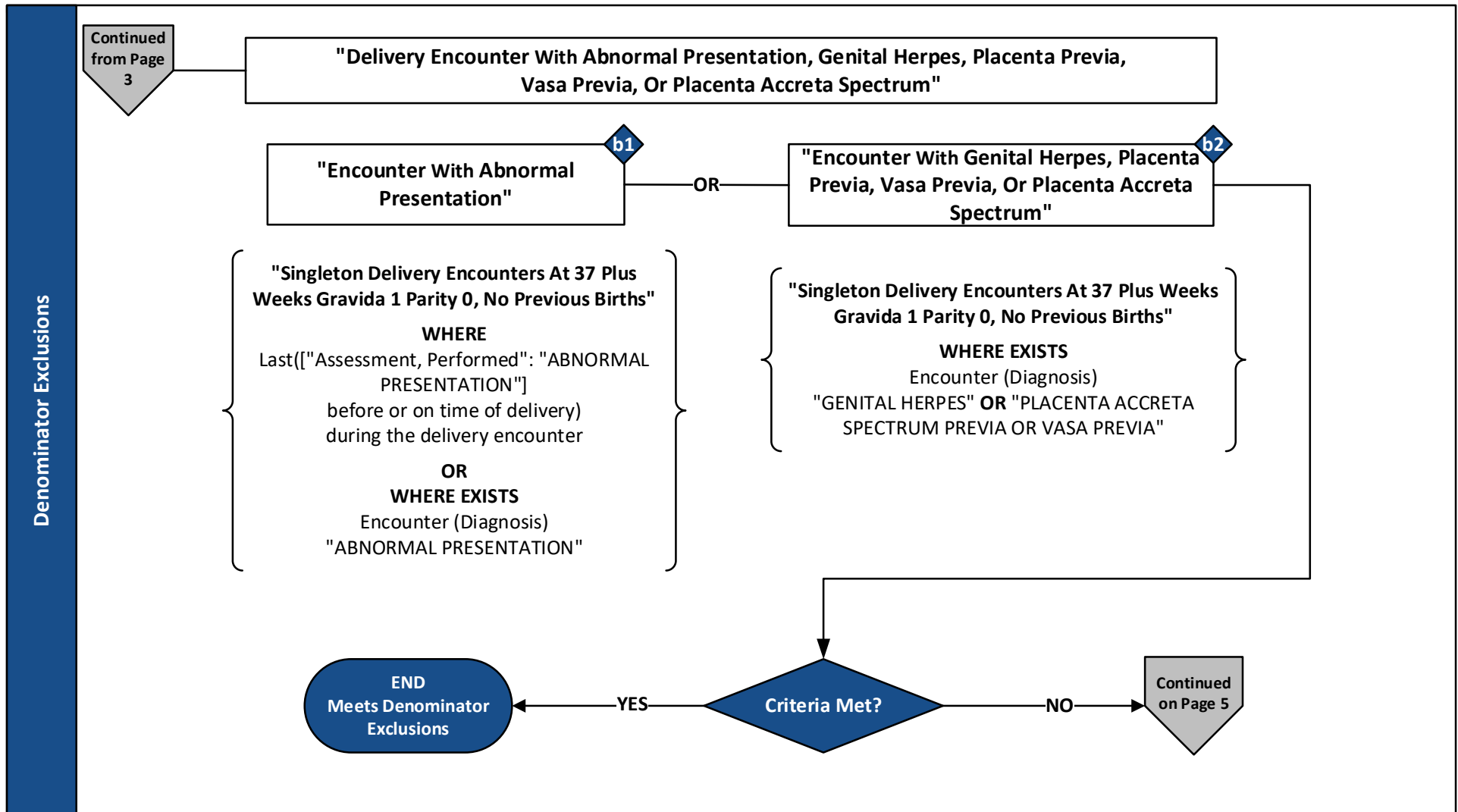
### Measure Flow Diagram (Continued)



## 2026 eCQM Flow – CMS334v7: Cesarean Birth (PC-02)\* CBE# 0471e

*\*This flow diagram represents an overview of population criteria requirements. Please refer to the eCQM measure specification for a complete list of definitions, direct reference codes, data or timing elements included in this measure and required for submission.*

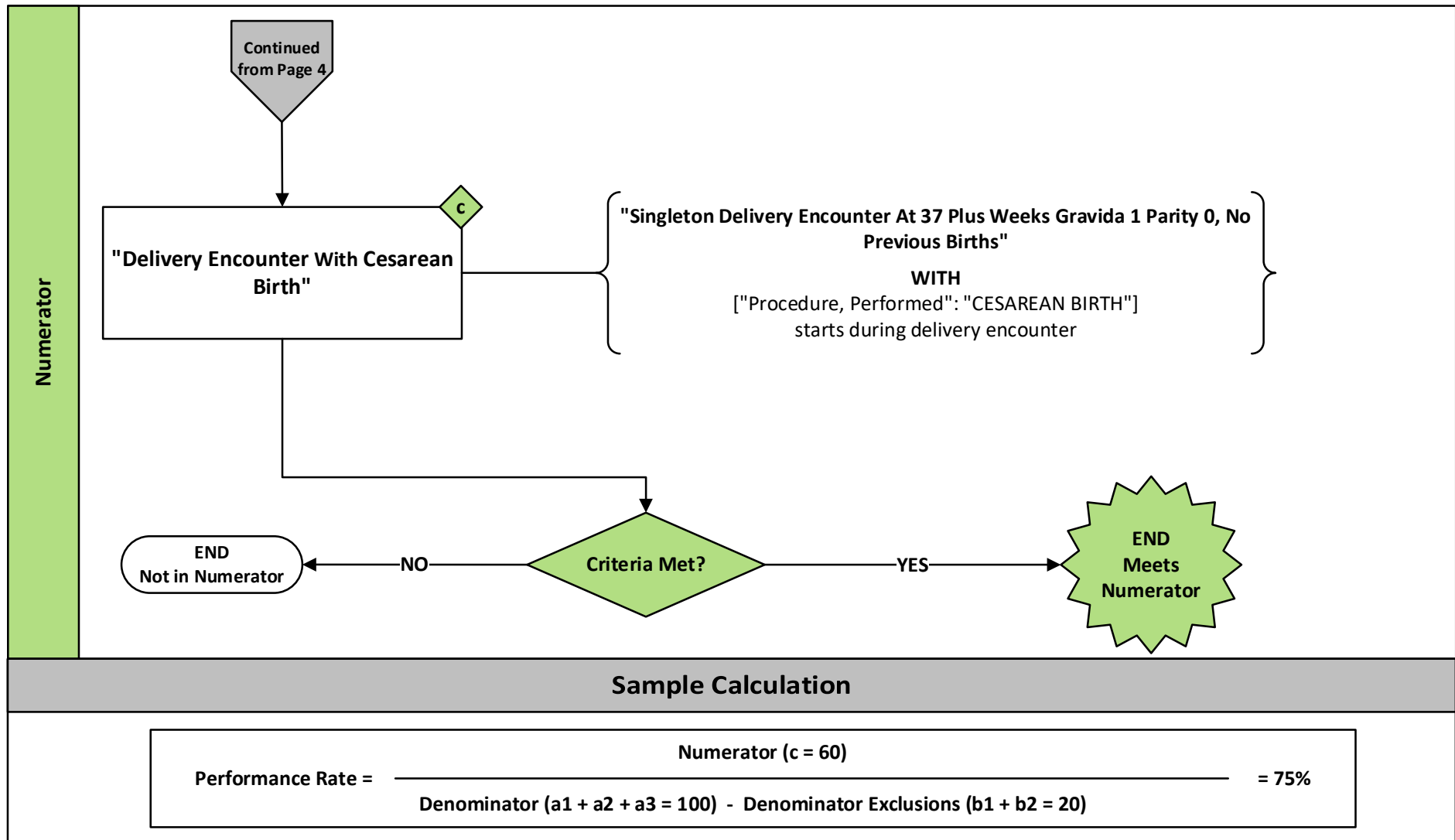
### Measure Flow Diagram (Continued)



## 2026 eCQM Flow – CMS334v7: Cesarean Birth (PC-02)\* CBE# 0471e

*\*This flow diagram represents an overview of population criteria requirements. Please refer to the eCQM measure specification for a complete list of definitions, direct reference codes, data or timing elements included in this measure and required for submission.*

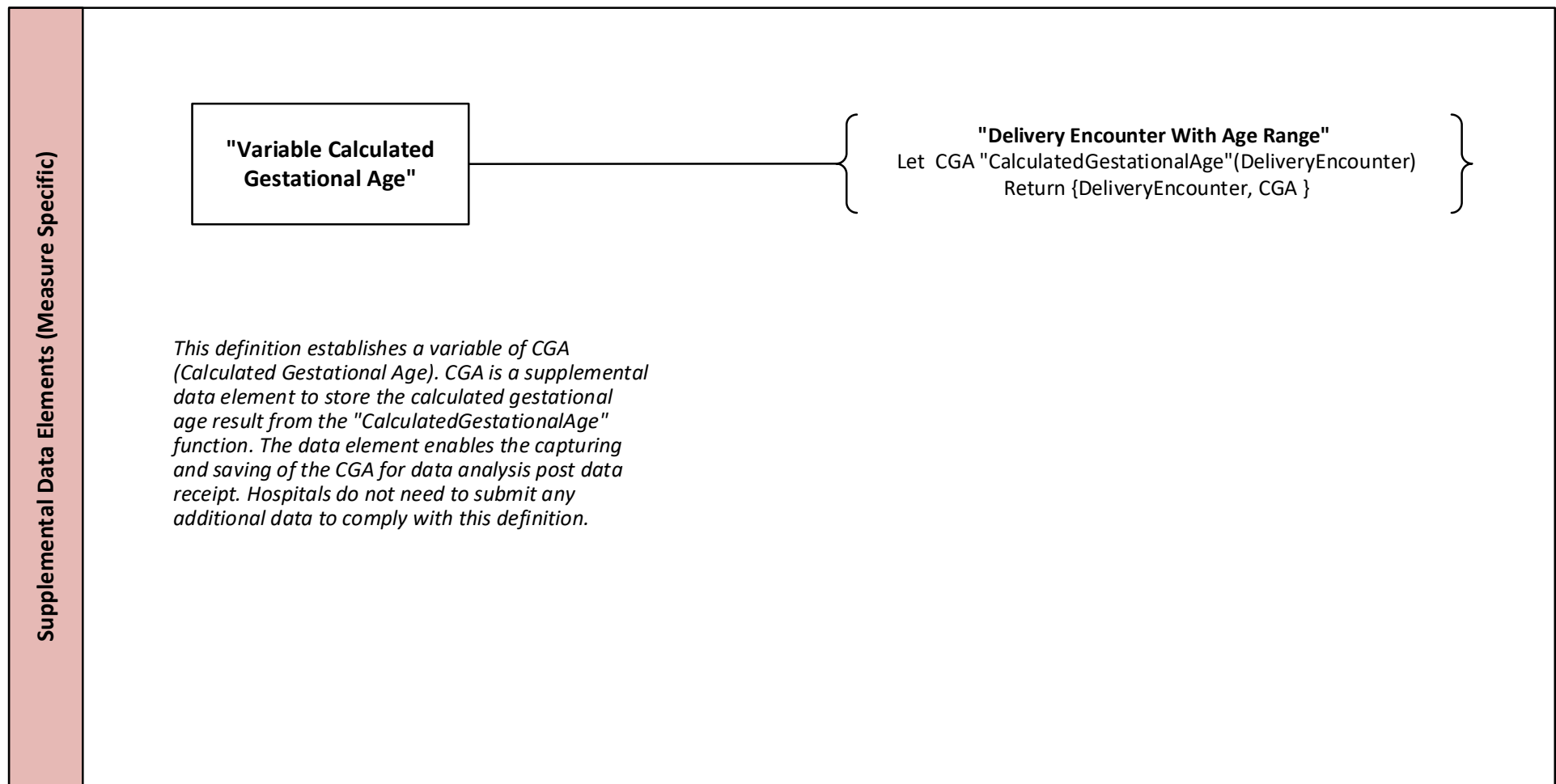
### Measure Flow Diagram (Continued)



2026 eCQM Flow – CMS334v7: Cesarean Birth (PC-02)\* CBE# 0471e

*\*This flow diagram represents an overview of population criteria requirements. Please refer to the eCQM measure specification for a complete list of definitions, direct reference codes, data or timing elements included in this measure and required for submission.*

Measure Flow Diagram (Continued)



## 2026 eCQM Flow – CMS334v7: Cesarean Birth (PC-02)\* CBE# 0471e

*\*This flow diagram represents an overview of population criteria requirements. Please refer to the eCQM measure specification for a complete list of definitions, direct reference codes, data or timing elements included in this measure and required for submission.*

### Measure Flow Narrative

The measure flow diagram on the preceding pages illustrates the steps to determine the population criteria for this measure.

Measure Description	This measure is reported as the rate of nulliparous patients with a term, singleton baby in a vertex position delivered by cesarean birth
Initial Population	Start by identifying the initial population criteria as Inpatient hospitalizations for patients age $\geq 8$ years and $< 65$ admitted to the hospital for inpatient acute care who undergo a delivery procedure with a discharge date that ends during the measurement period
Denominator	<p>The denominator further constrains the initial population to include inpatient hospitalizations for nulliparous patients who delivered a live term singleton newborn <math>\geq 37</math> weeks' gestation</p> <p>The eCQM logic defines a patient as nulliparous when ONE of the following is true:</p> <ol style="list-style-type: none"><li>1. Parity equals zero</li><li>2. Gravidity equals one</li><li>3. Preterm and Term births both equal zero</li></ol>
Denominator Exclusions	<p>The denominator exclusions criteria identify a subset of the denominator population by excluding inpatient hospitalizations for patients with any of the following conditions during the encounter:</p> <ul style="list-style-type: none"><li>• abnormal presentation</li><li>• genital herpes</li><li>• placenta previa</li><li>• vasa previa</li><li>• placenta accreta spectrum</li></ul>

2026 eCQM Flow – **CMS334v7: Cesarean Birth (PC-02)\*** CBE# 0471e

*\*This flow diagram represents an overview of population criteria requirements. Please refer to the eCQM measure specification for a complete list of definitions, direct reference codes, data or timing elements included in this measure and required for submission.*

**Measure Flow Narrative (Continued)**

The measure flow diagram on the preceding pages illustrates the steps to determine the population criteria for this measure.

Numerator	The numerator criteria identify a subset of the denominator population (that did not meet the denominator exclusions) by including Inpatient hospitalizations for patients who deliver by cesarean section
Supplemental Data Elements (Measure Specific)	For every patient evaluated by this measure, also identify calculated gestational age