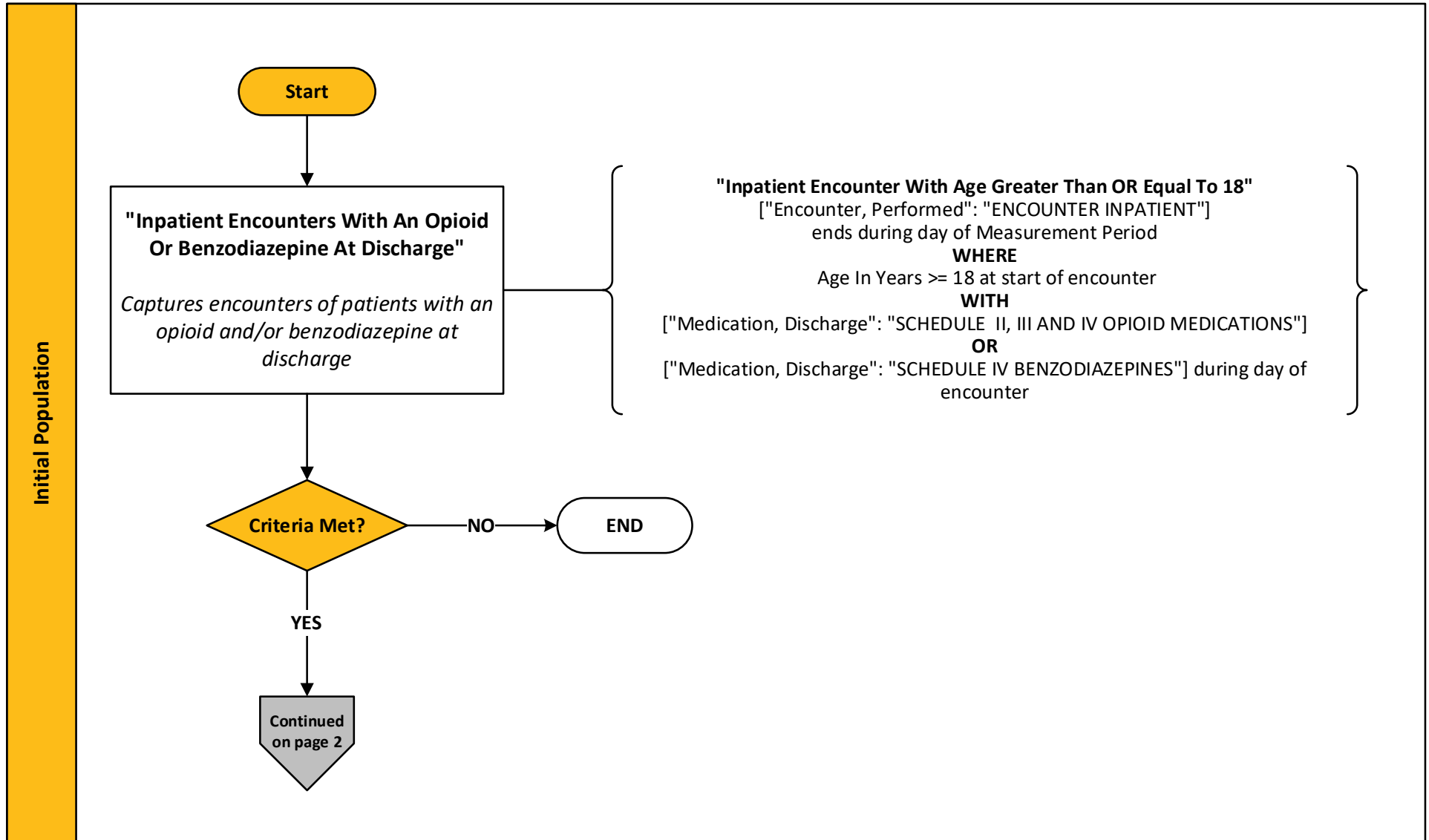


2026 eCQM Flow – CMS506v8: Safe Use of Opioids – Concurrent Prescribing* CBE# 3316e

*This flow diagram represents an overview of population criteria requirements. Please refer to the eCQM measure specification for a complete list of definitions, direct reference codes, data or timing elements included in this measure and required for submission.

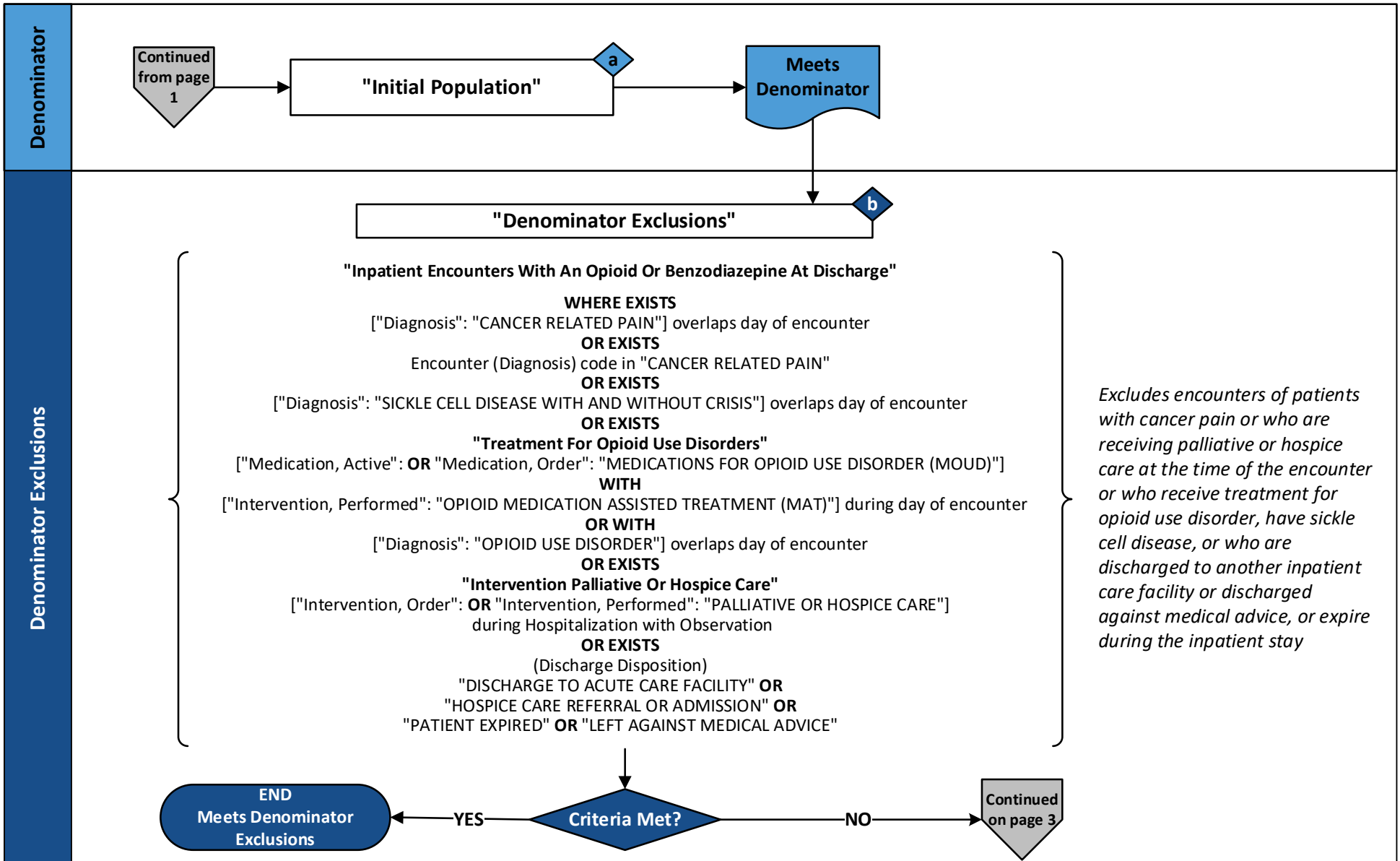
Measure Flow Diagram



2026 eCQM Flow – CMS506v8: Safe Use of Opioids – Concurrent Prescribing* CBE# 3316e

*This flow diagram represents an overview of population criteria requirements. Please refer to the eCQM measure specification for a complete list of definitions, direct reference codes, data or timing elements included in this measure and required for submission.

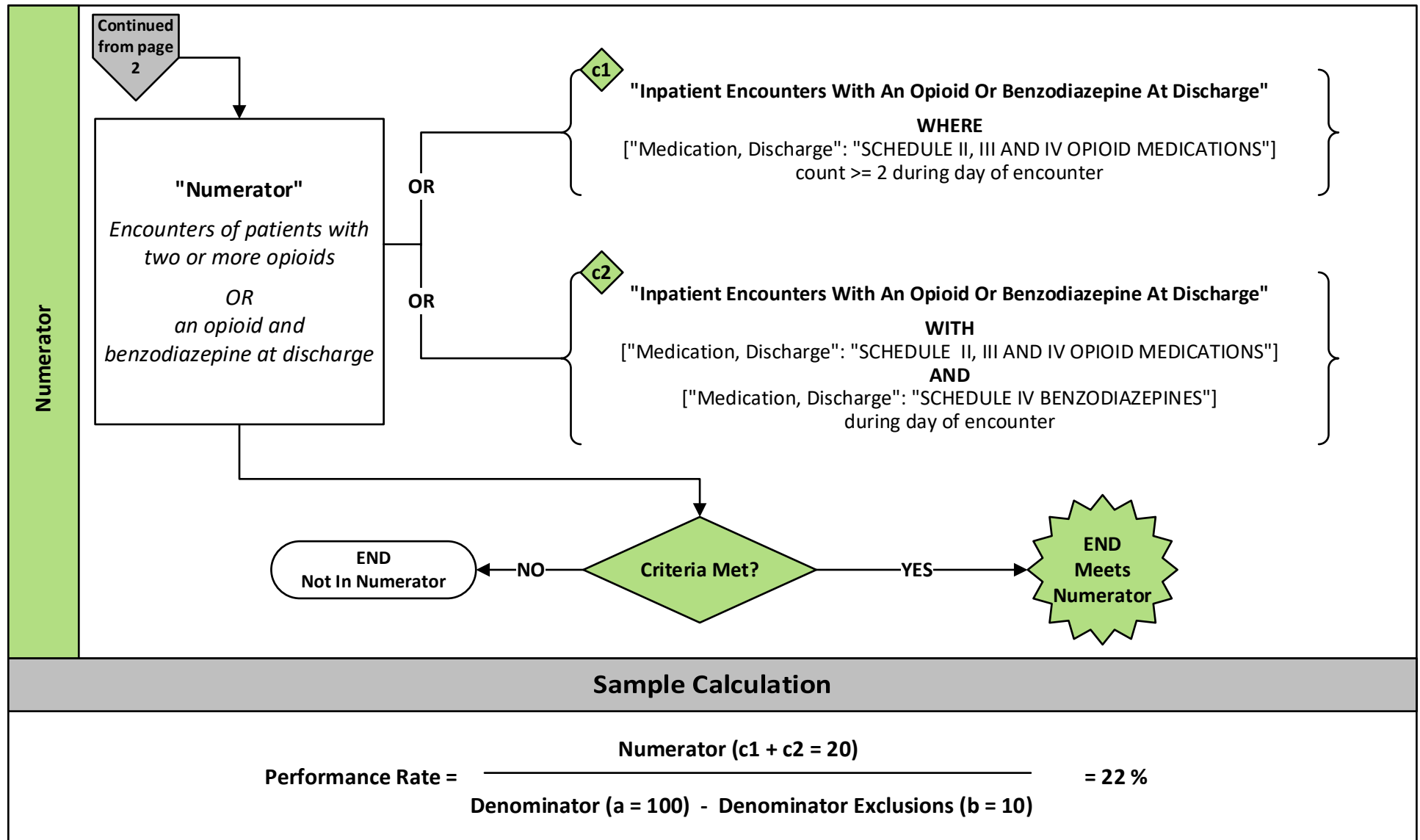
Measure Flow Diagram (Continued)



2026 eCQM Flow – CMS506v8: Safe Use of Opioids – Concurrent Prescribing* CBE# 3316e

*This flow diagram represents an overview of population criteria requirements. Please refer to the eCQM measure specification for a complete list of definitions, direct reference codes, data or timing elements included in this measure and required for submission.

Measure Flow Diagram (Continued)



2026 eCQM Flow – CMS506v8: Safe Use of Opioids – Concurrent Prescribing* CBE# 3316e

**This flow diagram represents an overview of population criteria requirements. Please refer to the eCQM measure specification for a complete list of definitions, direct reference codes, data or timing elements included in this measure and required for submission.*

Measure Flow Narrative

The measure flow diagram on the preceding pages illustrates the steps to determine the population criteria for this measure.

Measure Description	This measure assesses the proportion of inpatient hospitalizations for patients age 18 years and older prescribed, or continued on, two or more opioids or an opioid and benzodiazepine concurrently at discharge
Initial Population	Start by identifying the initial population criteria as inpatient hospitalizations that end during the measurement period where: <ul style="list-style-type: none">• patient is 18 years or older at the start of the encounter• patient is prescribed one opioid and/or benzodiazepine at discharge
Denominator	The denominator is the same as the Initial Population
Denominator Exclusions	The denominator exclusions criteria identify a subset of the denominator population by excluding inpatient hospitalizations where the patient has any of the following: <ul style="list-style-type: none">• cancer pain that begins prior to or during the encounter• ordered or are receiving palliative or hospice care (including comfort measures, terminal care, and dying care) during the hospitalization or in an emergency department encounter or observation stay immediately prior to hospitalization• receiving medication for opioid use disorder (OUD) with active OUD diagnosis or Opioid Medication Assisted Treatment (MAT)• sickle cell disease• discharged to another inpatient care facility• left against medical advice• expires during the inpatient stay

2026 eCQM Flow – CMS506v8: Safe Use of Opioids – Concurrent Prescribing* CBE# 3316e

**This flow diagram represents an overview of population criteria requirements. Please refer to the eCQM measure specification for a complete list of definitions, direct reference codes, data or timing elements included in this measure and required for submission.*

Measure Flow Narrative (Continued)

The measure flow diagram on the preceding pages illustrates the steps to determine the population criteria for this measure.

Numerator	<p>The numerator criteria identify a subset of the denominator population (that did not meet the denominator exclusions criteria) by including inpatient hospitalizations where the patient is prescribed at discharge:</p> <ul style="list-style-type: none">• two or more opioids, OR• an opioid AND a benzodiazepine
-----------	--