

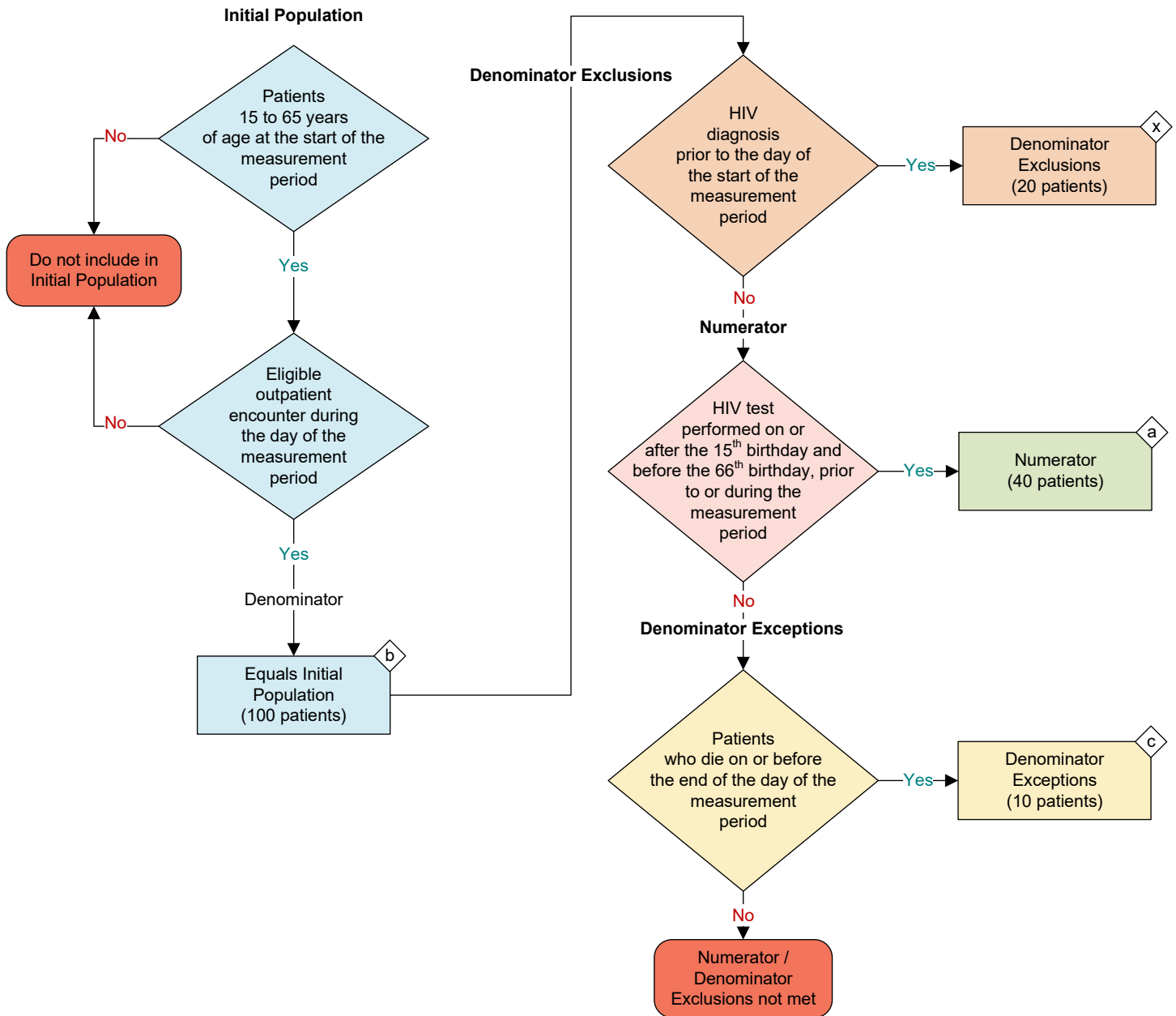
2026 eCQM Flow
eCQM Identifier: CMS349v8

NOTE: This flow diagram represents an overview of population criteria requirements. **Refer to the eCQM specification for a complete list of data elements included in this measure and required for submission.**

HIV Screening

Percentage of patients aged 15-65 at the start of the measurement period who were between 15-65 years old when tested for human immunodeficiency virus (HIV)

This eCQM is a patient-based measure



Sample Calculation

Performance Rate =

$$\frac{\text{Numerator (a = 40 patients)}}{\text{Denominator (b = 100 patients) - Denominator Exclusions (x = 20 patients) - Denominator Exceptions (c = 10 patients)}} = \frac{40}{70} = 57\%$$

eCQM Identifier: CMS349v8**eCQM Title: HIV Screening**

NOTE: This flow diagram represents an overview of population criteria requirements. Refer to the eCQM specification for a complete list of data elements included in this measure and required for submission.

Description: Percentage of patients aged 15 to 65 at the start of the measurement period who were between 15 to 65 years old when tested for human immunodeficiency virus (HIV).

This eCQM is a patient-based measure.

eCQM Flow Narrative**Initial Population**

Start by identifying the Initial Population, which includes patients 15 to 65 years of age with an eligible outpatient encounter during the day of the measurement period.

Denominator

The Denominator equals the Initial Population. In the sample calculation provided at the end of the eCQM flow, the Denominator is equal to 100 patients.

Denominator Exclusions

The Denominator Exclusions criteria identify a subset of the Denominator population by excluding patients with a HIV diagnosis prior to the day of the start of the measurement period. In the sample calculation provided at the end of the eCQM flow, the Denominator Exclusions are equal to 20 patients.

Numerator

The Numerator criteria identify a subset of the Denominator population that did not meet the Denominator Exclusions criteria by including patients who had a HIV test performed on or after the 15th birthday and before the 66th birthday, prior to or during the measurement period. In the sample calculation provided at the end of the eCQM flow, the Numerator is equal to 40 patients.

Denominator Exceptions

The Denominator Exceptions criteria identify patients from the Denominator that did not meet the Denominator Exclusions or Numerator population criteria due to patients who die on or before the end of the day of the measurement period. In the sample calculation provided at the end of the eCQM flow, the Denominator Exceptions are equal to 10 patients.

Sample Calculation

A sample calculation is provided to help determine how the measure performance rate is derived. The measure performance rate is calculated by dividing the Numerator (total equals 40 patients) by the difference between the Denominator (total equals 100 patients), the

Denominator Exclusions (total equals 20 patients) and the Denominator Exceptions (total equals 10 patients), which is equal to a score of 57 percent.