

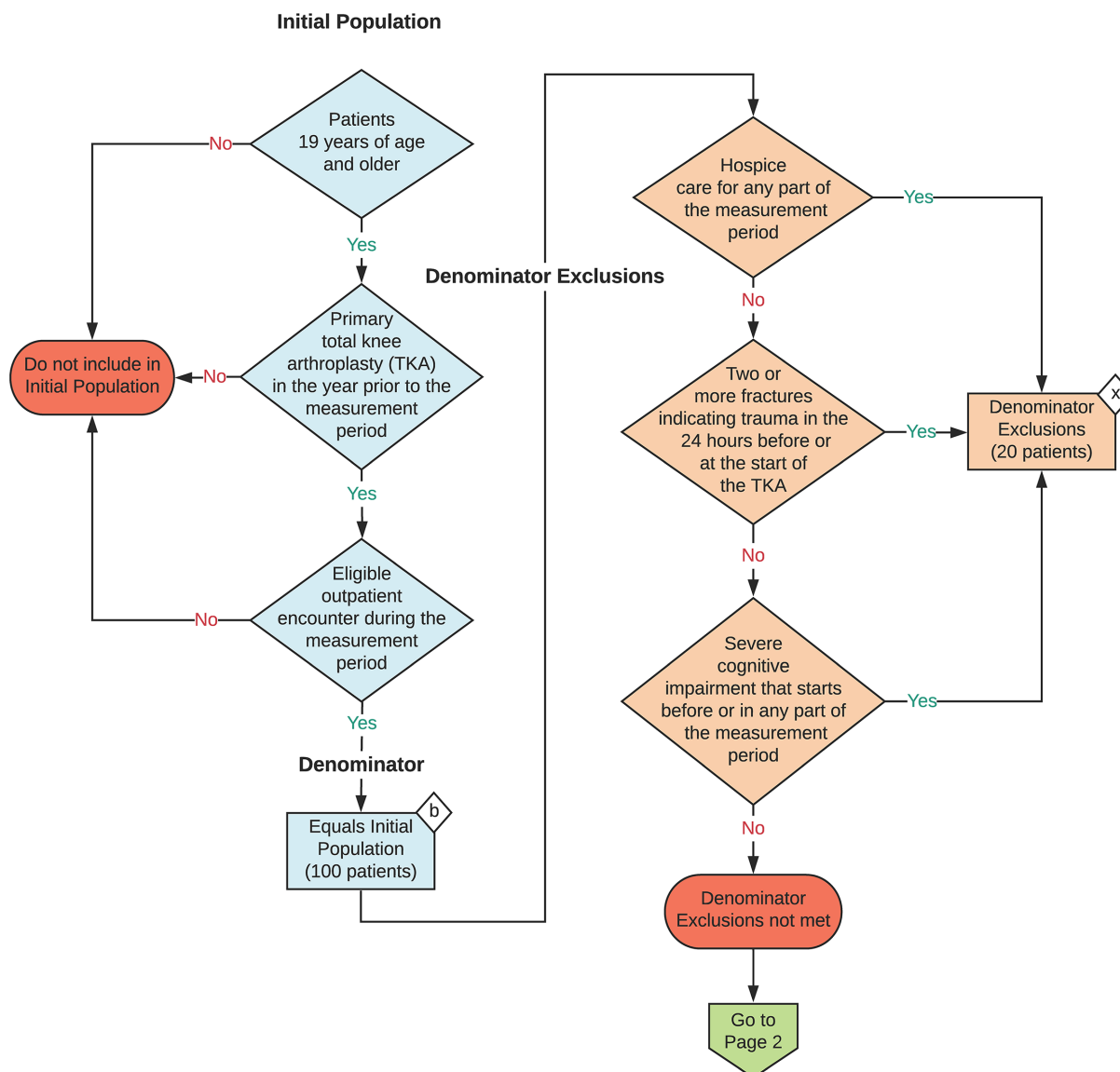
## 2023 eCQM Flow eCQM Identifier: CMS66v11

**NOTE:** This flow diagram represents an overview of population criteria requirements. **Refer to the eCQM specification for a complete list of data elements included in this measure and required for submission.**

## Functional Status Assessment for Total Knee Replacement

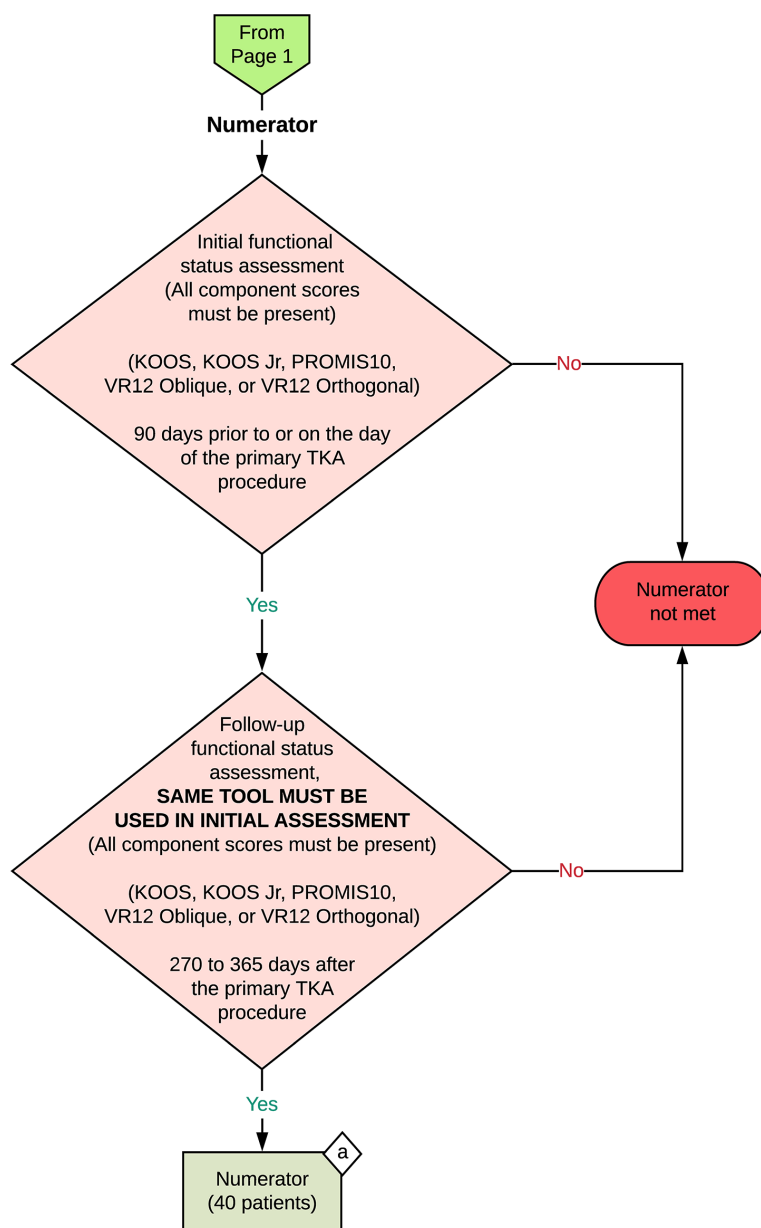
Percentage of patients 19 years of age and older who received an elective primary total knee arthroplasty (TKA) and completed a functional status assessment within 90 days prior to the surgery and in the 270-365 days after the surgery

This eCQM is a patient-based measure



2023 eCQM Flow  
eCQM Identifier: CMS66v11

### Functional Status Assessment for Total Knee Replacement



#### Sample Calculation

**Performance Rate =**

$$\frac{\text{Numerator (a = 40 patients)}}{\text{Denominator (b = 100 patients) - Denominator Exclusions (x = 20 patients)}} = \frac{40}{80} = 50\%$$

**eCQM Identifier: CMS66v11****eCQM Title: Functional Status Assessment for Total Knee Replacement**

**NOTE:** This flow diagram represents an overview of population criteria requirements. Refer to the eCQM specification for a complete list of data elements included in this measure and required for submission.

**Description:** Percentage of patients 19 years of age and older who received an elective primary total knee arthroplasty (TKA) and completed a functional status assessment within 90 days prior to the surgery and in the 270-365 days after the surgery.

**This eCQM is a patient-based measure.**

**eCQM Flow Narrative****Initial Population**

Start by identifying the Initial Population, which includes patients 19 years of age and older with a primary total knee arthroplasty (TKA) in the year prior to the measurement period and an eligible outpatient encounter during the measurement period.

**Denominator**

The Denominator equals the Initial Population. In the sample calculation provided at the end of the eCQM flow, the Denominator is equal to 100 patients.

**Denominator Exclusions**

The Denominator Exclusions criteria identify a subset of the Denominator population by excluding patients who are in hospice care for any part of the measurement period, patients with two or more fractures indicating trauma in the 24 hours before or at the start of the TKA, and patients with severe cognitive impairment that starts before or in any part of the measurement period. In the sample calculation provided at the end of the eCQM flow, the Denominator Exclusions are equal to 20 patients.

**Numerator**

The Numerator criteria identify a subset of the Denominator population (that did not meet the Denominator Exclusions criteria) by including patients with an initial functional status assessment with all component scores present (KOOS, KOOS Jr, PROMIS10, VR12 Oblique, or VR12 Orthogonal) 90 days prior to or on the day of the primary TKA procedure and a follow-up functional status assessment, same tool as used in the initial assessment with all component scores present (KOOS, KOOS Jr, PROMIS10, VR12 Oblique, or VR12 Orthogonal), 270 to 365 days after the primary TKA procedure. In the sample calculation provided at the end of the eCQM flow, the Numerator is equal to 40 patients.

**Sample Calculation**

A sample calculation is provided to help determine how the measure performance rate is derived. The measure performance rate is calculated by dividing the Numerator (total equals 40 patients) by the difference between the Denominator (total equals 100 patients) and the Denominator Exclusions (total equals 20 patients), which is equal to a score of 50 percent.