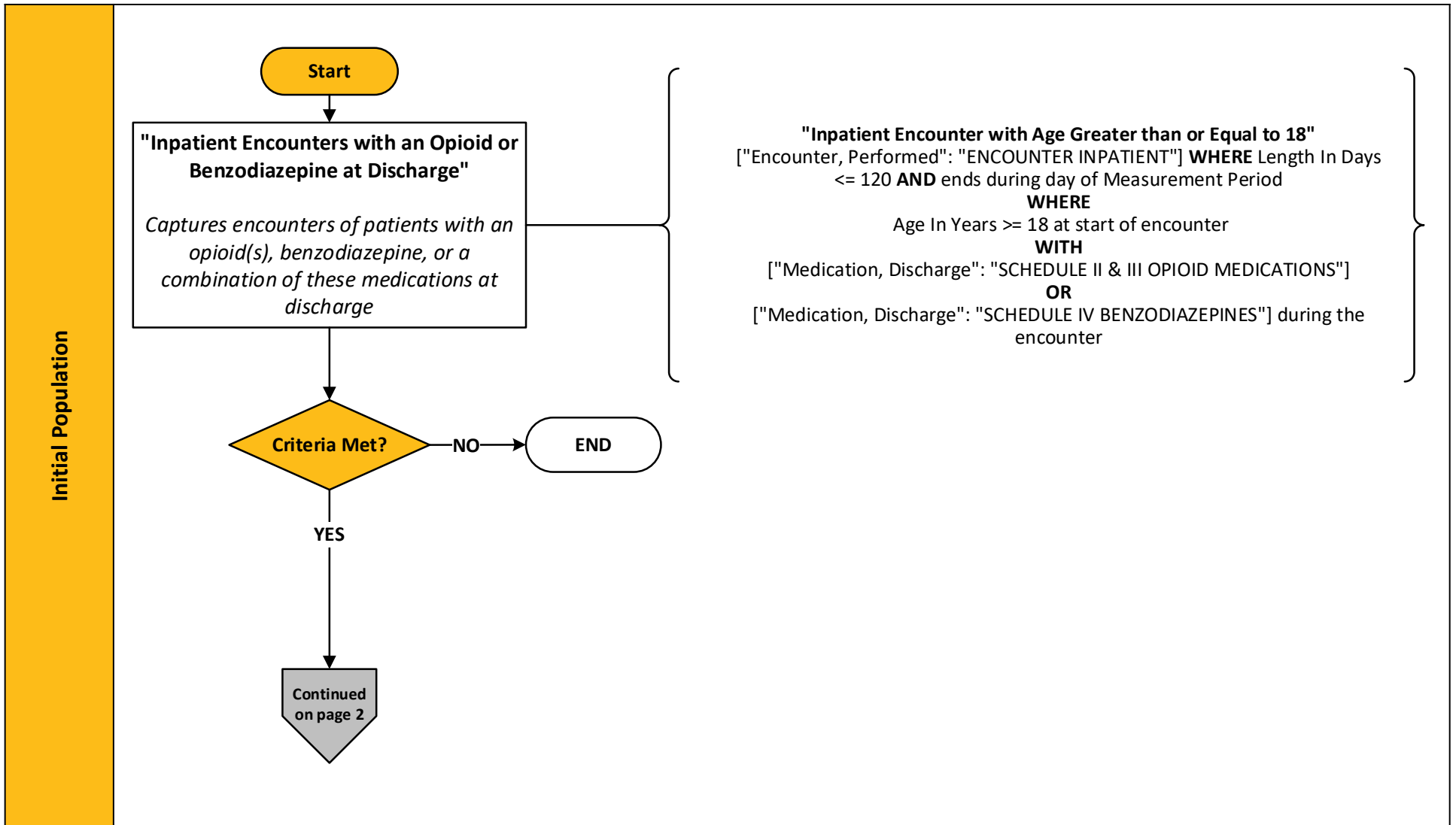


# 2024 eCQM Flow – CMS506v6: Safe Use of Opioids – Concurrent Prescribing\* NQF# 3316e

\*This flow diagram represents an overview of population criteria requirements. Please refer to the eCQM measure specification for a complete list of definitions, direct reference codes, data or timing elements included in this measure and required for submission.

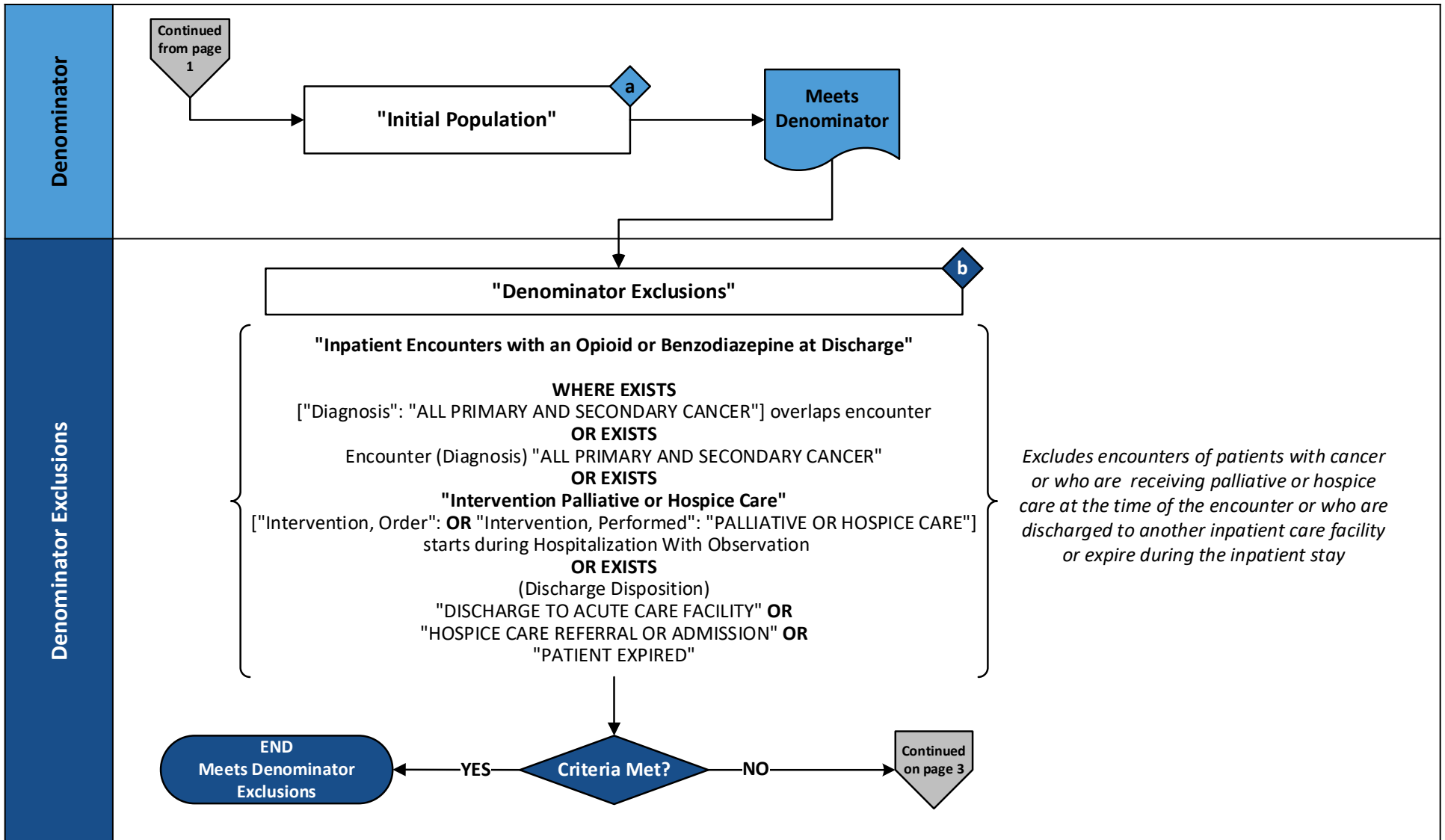
## Measure Flow Diagram



# 2024 eCQM Flow – CMS506v6: Safe Use of Opioids – Concurrent Prescribing\* NQF# 3316e

\*This flow diagram represents an overview of population criteria requirements. Please refer to the eCQM measure specification for a complete list of definitions, direct reference codes, data or timing elements included in this measure and required for submission.

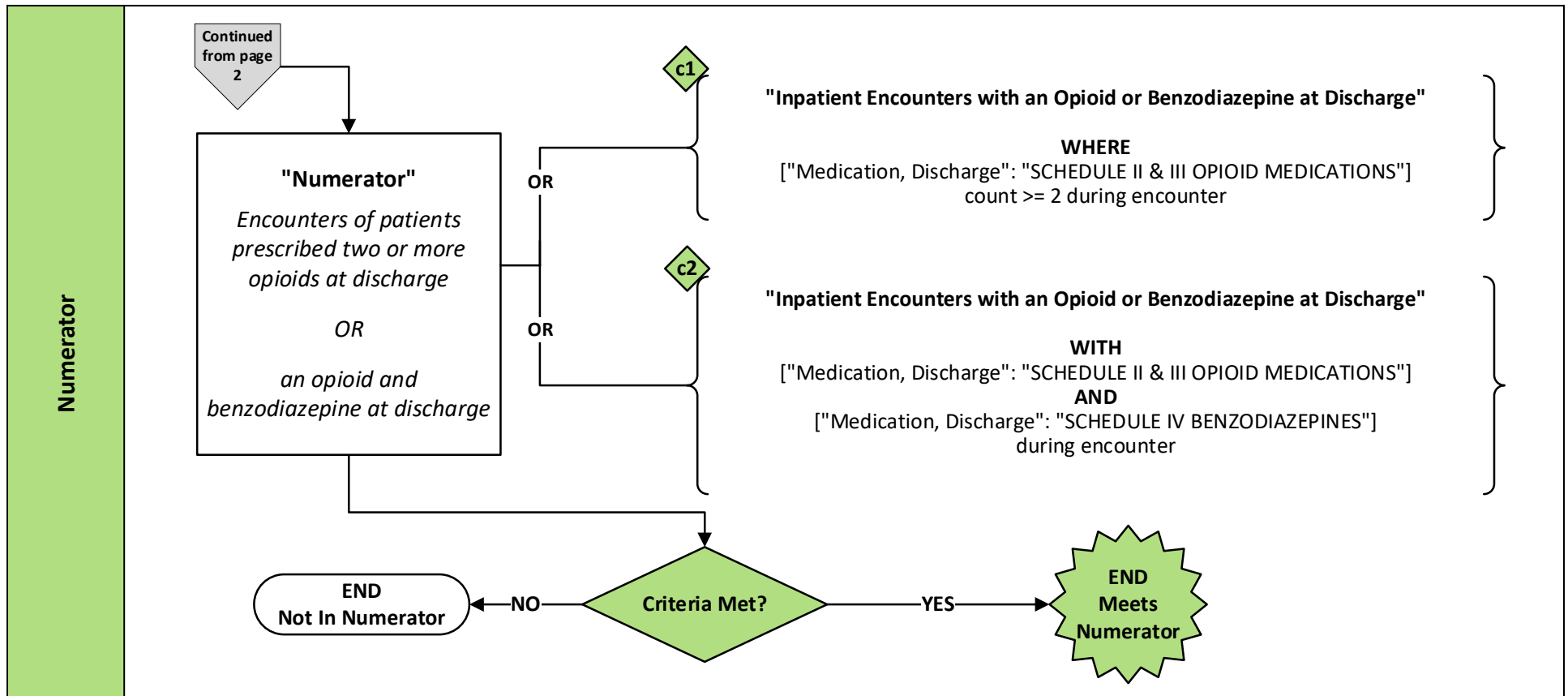
## Measure Flow Diagram (Continued)



# 2024 eCQM Flow – CMS506v6: Safe Use of Opioids – Concurrent Prescribing\* NQF# 3316e

\*This flow diagram represents an overview of population criteria requirements. Please refer to the eCQM measure specification for a complete list of definitions, direct reference codes, data or timing elements included in this measure and required for submission.

## Measure Flow Diagram (Continued)



### Sample Calculation

$$\text{Performance Rate} = \frac{\text{Numerator (c1 + c2 = 20)}}{\text{Denominator (a = 100) - Denominator Exclusions (b = 10)}} = 22\%$$

## 2024 eCQM Flow – CMS506v6: Safe Use of Opioids – Concurrent Prescribing\* NQF# 3316e

*\*This flow diagram represents an overview of population criteria requirements. Please refer to the eCQM measure specification for a complete list of definitions, direct reference codes, data or timing elements included in this measure and required for submission.*

### Measure Flow Narrative

The measure flow diagram on the preceding pages illustrates the steps to determine the population criteria for this measure.

<b>Measure Description</b>	This measure assesses the proportion of inpatient hospitalizations for patients age 18 years and older prescribed, or continued on, two or more opioids or an opioid and benzodiazepine concurrently at discharge
<b>Initial Population</b>	<p>Start by identifying the initial population criteria as inpatient hospitalizations where:</p> <ul style="list-style-type: none"> <li>• the patient is 18 years or older at the start of the encounter</li> <li>• the patient had a length of stay less than or equal to 120 days that ends during the measurement period</li> <li>• the patient is prescribed one or more new or continuing opioid or benzodiazepine at discharge</li> </ul>
<b>Denominator</b>	The denominator is the same as the initial population
<b>Denominator Exclusions</b>	<p>The denominator exclusions criteria identify a subset of the denominator population by excluding inpatient hospitalizations where the patient has any of the following:</p> <ul style="list-style-type: none"> <li>• cancer that begins prior to or during the encounter</li> <li>• ordered or are receiving palliative or hospice care (including comfort measures, terminal care, and dying care) during the hospitalization or in an emergency department encounter or observation stay immediately prior to hospitalization</li> <li>• discharged to another inpatient care facility</li> <li>• expires during the inpatient stay</li> </ul>

## 2024 eCQM Flow – CMS506v6: Safe Use of Opioids – Concurrent Prescribing\* NQF# 3316e

*\*This flow diagram represents an overview of population criteria requirements. Please refer to the eCQM measure specification for a complete list of definitions, direct reference codes, data or timing elements included in this measure and required for submission.*

### Measure Flow Narrative (Continued)

The measure flow diagram on the preceding pages illustrates the steps to determine the population criteria for this measure.

<b>Numerator</b>	<p>The numerator criteria identify a subset of the denominator population (that did not meet the denominator exclusions criteria) by including inpatient hospitalizations where the patient is prescribed or is continuing to take at discharge:</p> <ul style="list-style-type: none"><li>• two or more opioids</li><li>• OR an opioid AND a benzodiazepine</li></ul>
------------------	--