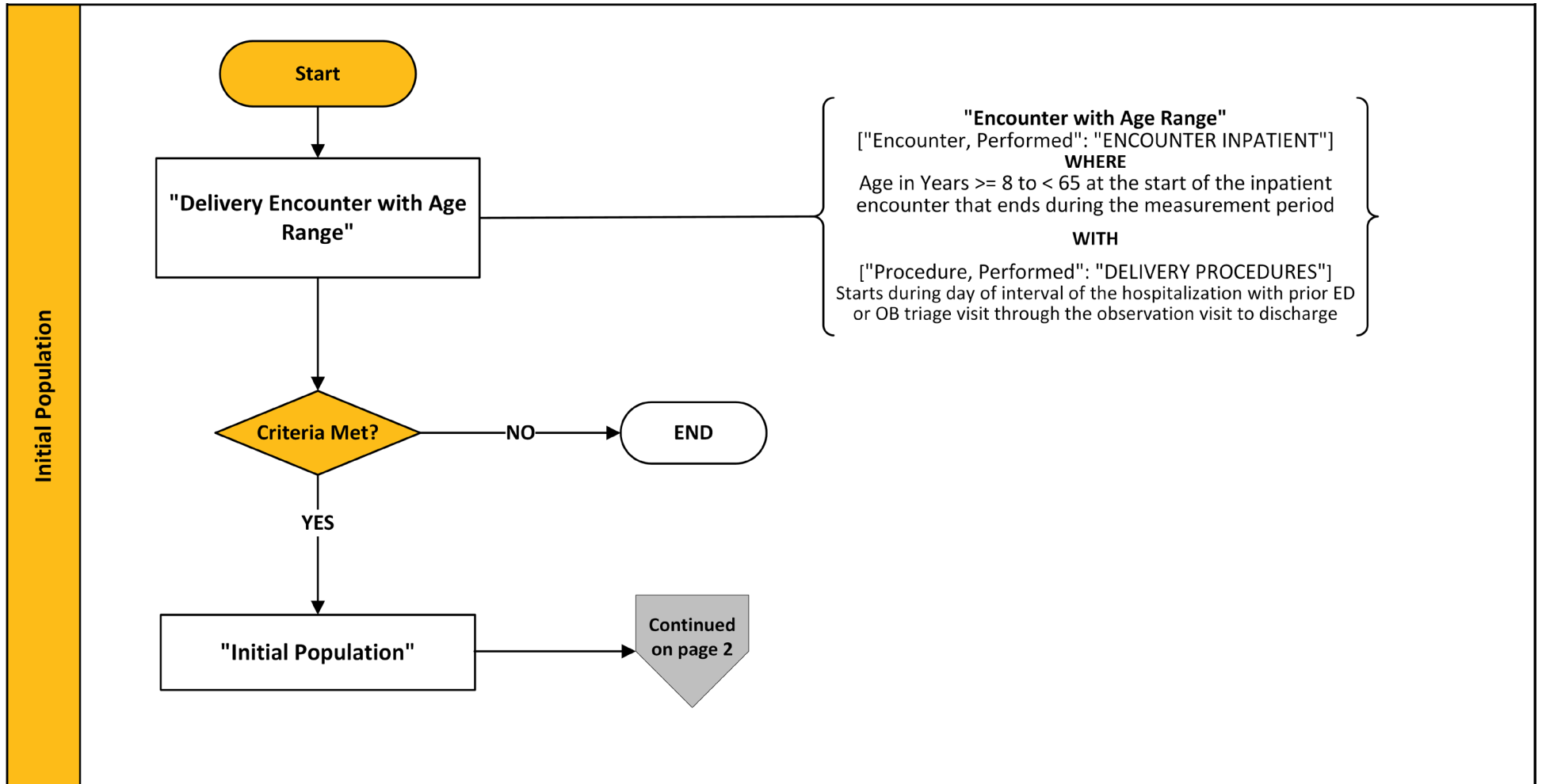


2023 eCQM Flow – CMS334v4: Cesarean Birth (PC-02)*

*This flow diagram represents an overview of population criteria requirements. Please refer to the eCQM measure specification for a complete list of definitions, direct reference codes, data or timing elements included in this measure and required for submission.

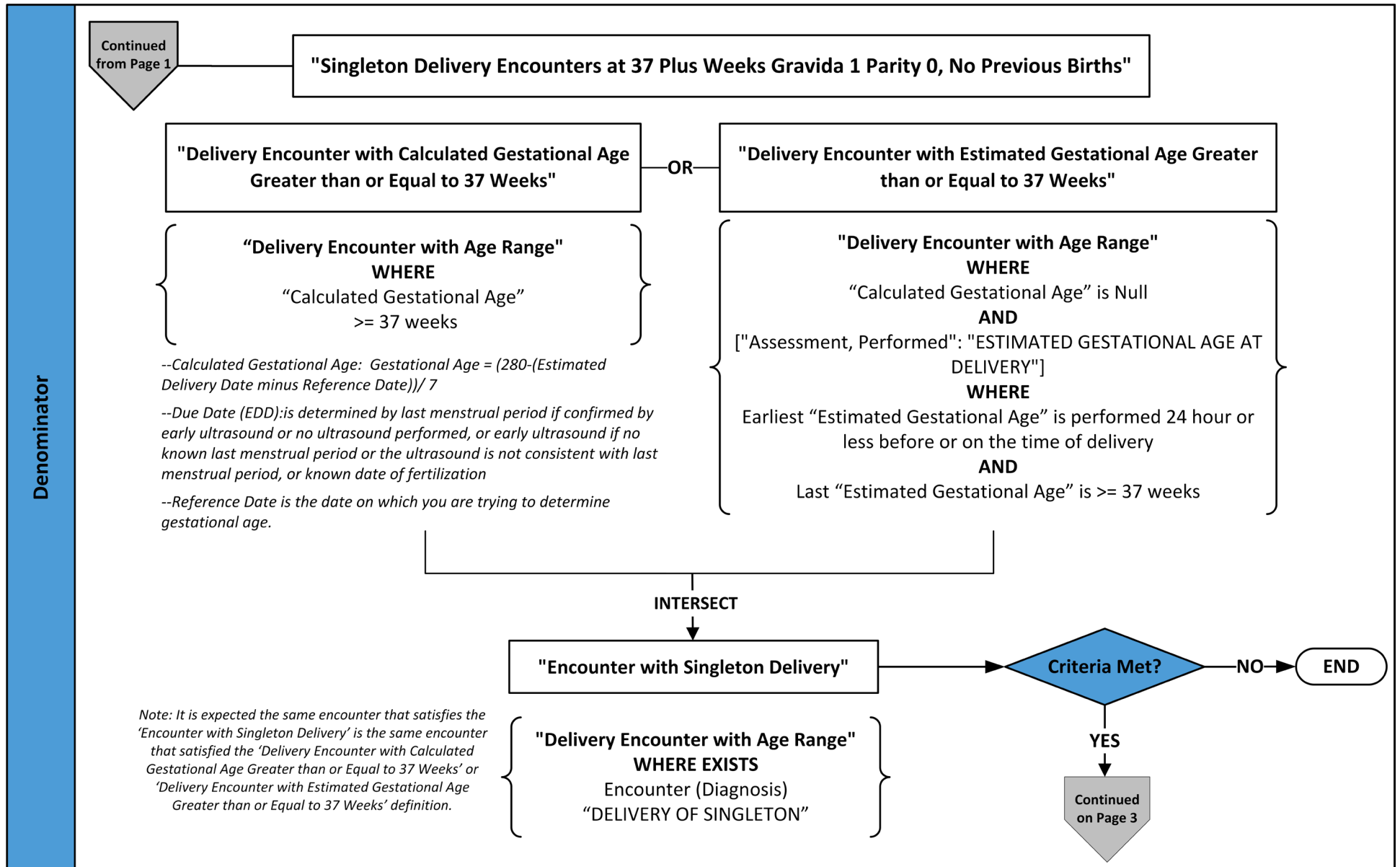
Measure Flow Diagram



2023 eCQM Flow – CMS334v4: Cesarean Birth (PC-02)*

*This flow diagram represents an overview of population criteria requirements. Please refer to the eCQM measure specification for a complete list of definitions, direct reference codes, data or timing elements included in this measure and required for submission.

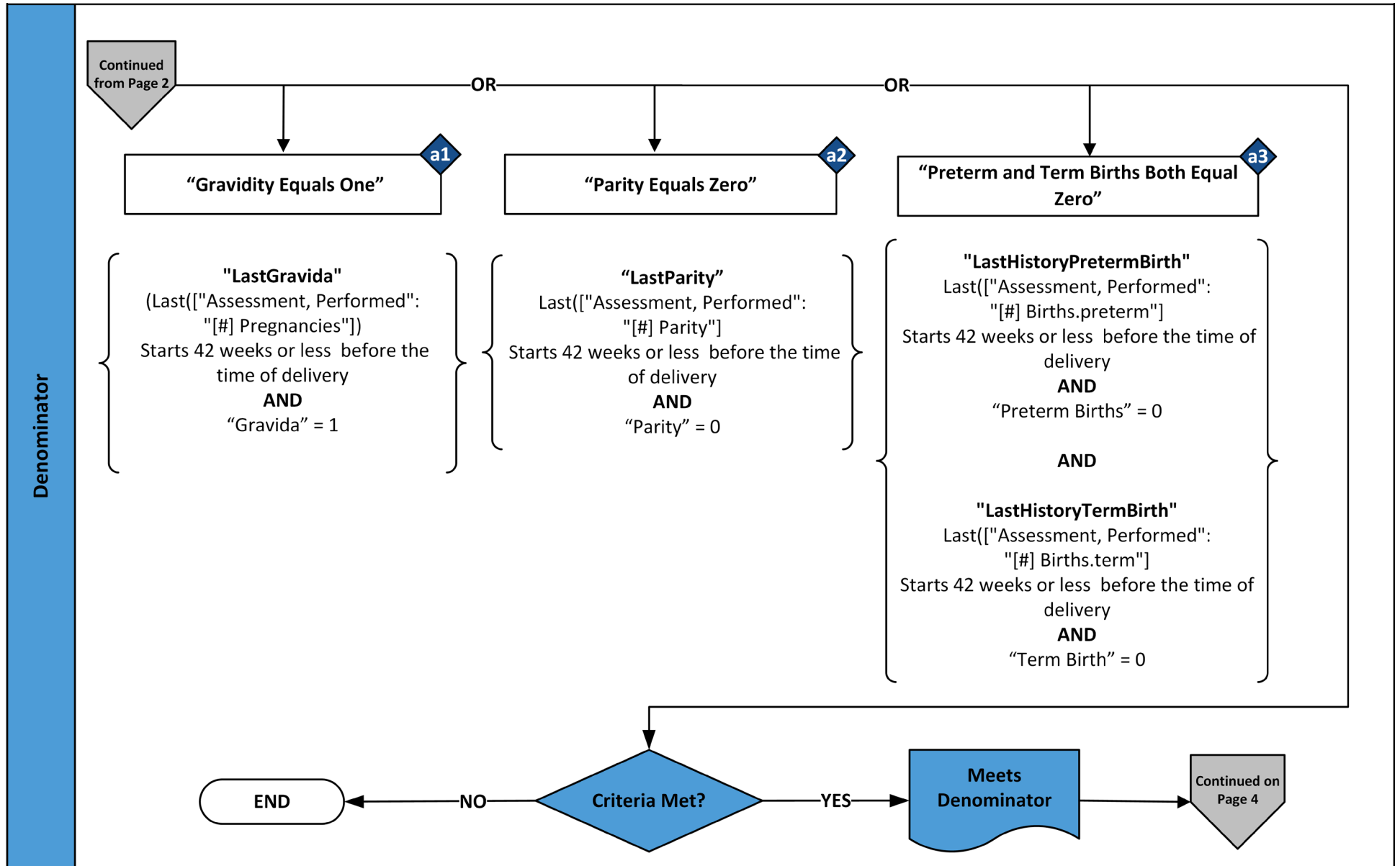
Measure Flow Diagram (Continued)



2023 eCQM Flow – CMS334v4: Cesarean Birth (PC-02)*

*This flow diagram represents an overview of population criteria requirements. Please refer to the eCQM measure specification for a complete list of definitions, direct reference codes, data or timing elements included in this measure and required for submission.

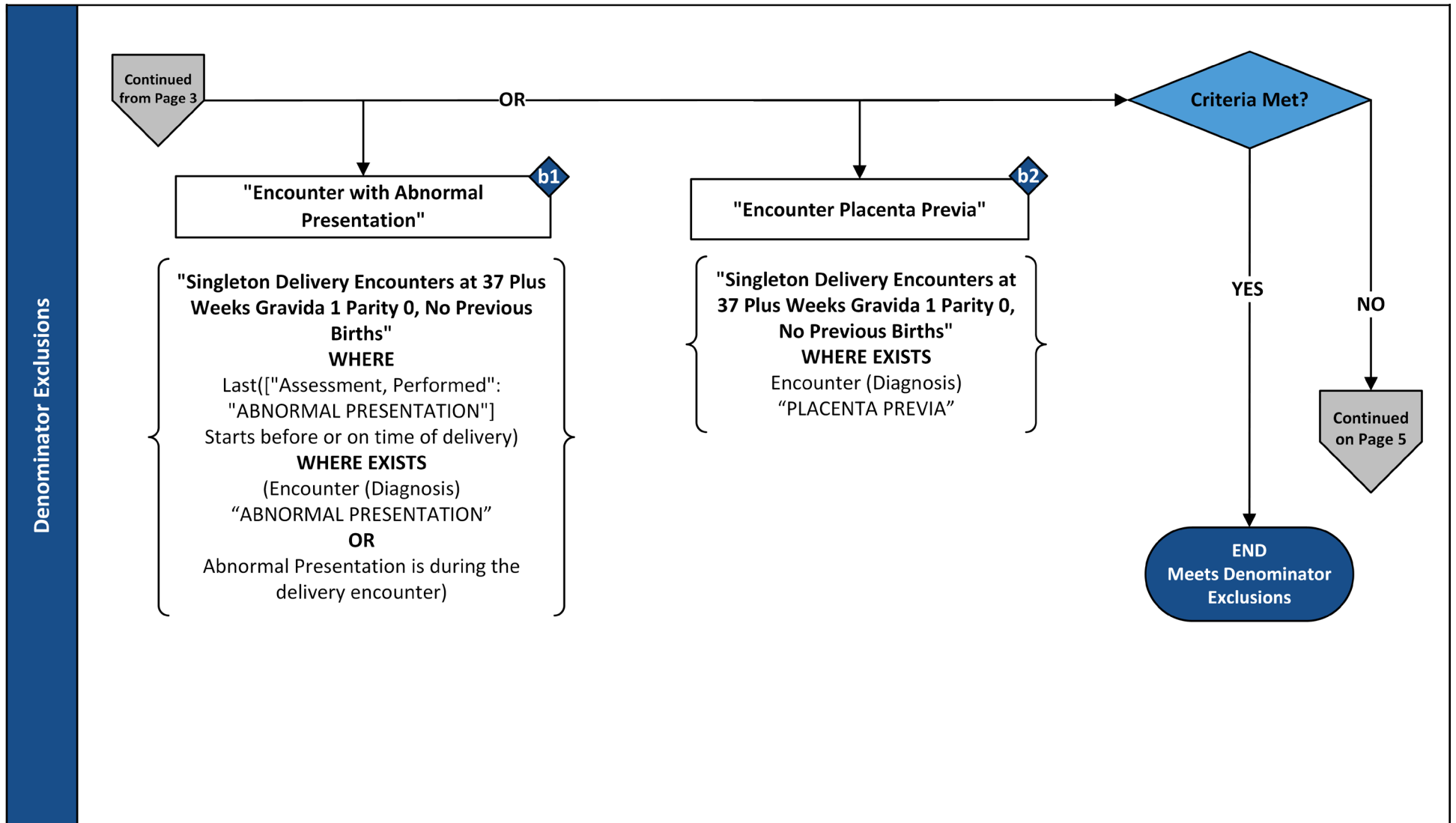
Measure Flow Diagram (Continued)



2023 eCQM Flow – CMS334v4: Cesarean Birth (PC-02)*

*This flow diagram represents an overview of population criteria requirements. Please refer to the eCQM measure specification for a complete list of definitions, direct reference codes, data or timing elements included in this measure and required for submission.

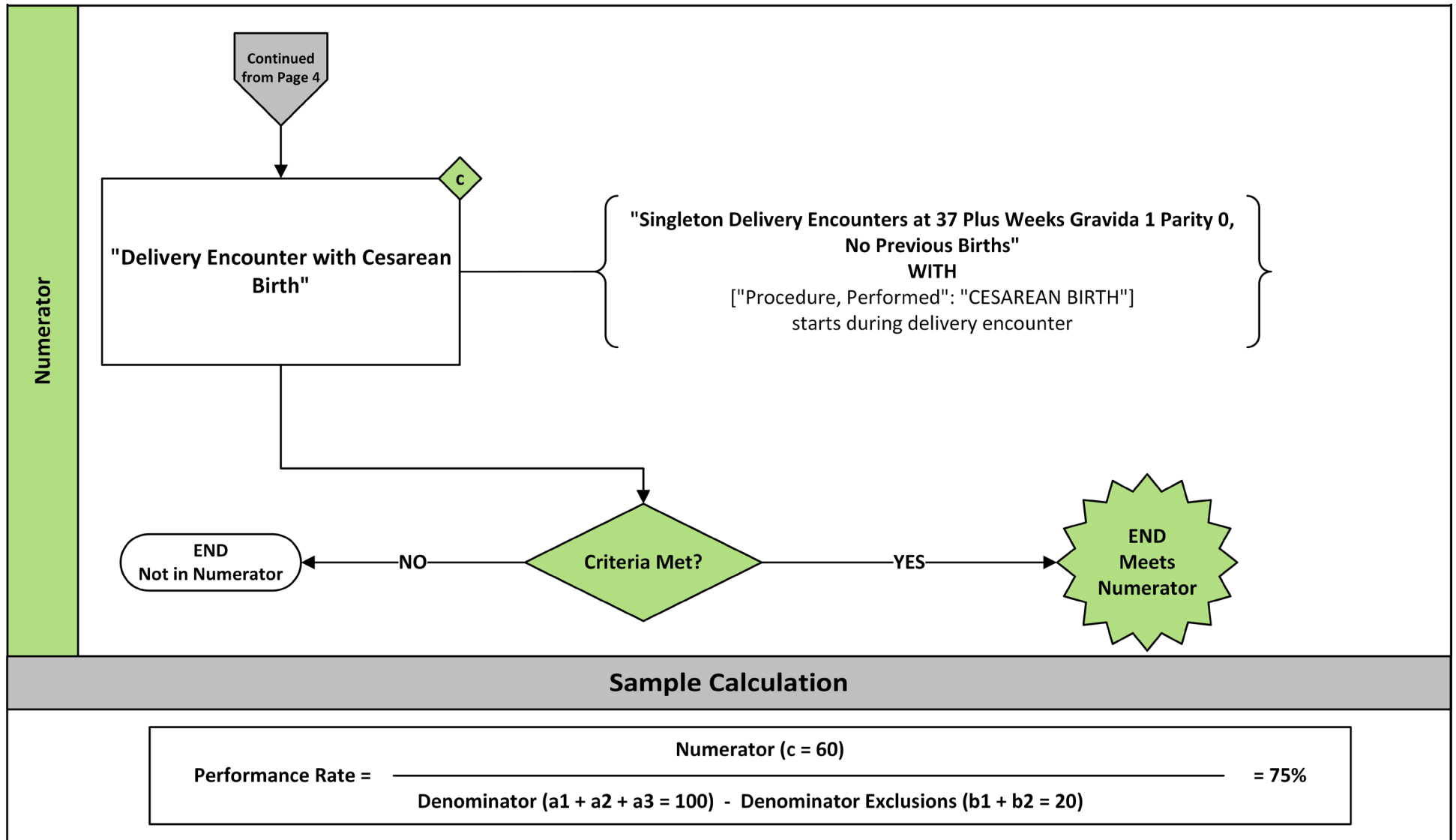
Measure Flow Diagram (Continued)



2023 eCQM Flow – CMS334v4: Cesarean Birth (PC-02)*

*This flow diagram represents an overview of population criteria requirements. Please refer to the eCQM measure specification for a complete list of definitions, direct reference codes, data or timing elements included in this measure and required for submission.

Measure Flow Diagram (Continued)



2023 eCQM Flow – CMS334v4: Cesarean Birth (PC-02)*

**This flow diagram represents an overview of population criteria requirements. Please refer to the eCQM measure specification for a complete list of definitions, direct reference codes, data or timing elements included in this measure and required for submission.*

Measure Flow Narrative

The measure flow diagram on the preceding pages illustrates the steps to determine the population criteria for this measure.

| | |
|-------------------------------|--|
| Measure Description | This measure is reported as the overall rate of nulliparous women with a term, singleton baby in a vertex position delivered by cesarean birth |
| Initial Population | Inpatient hospitalizations for patients age ≥ 8 years and < 65 admitted to the hospital for inpatient acute care who undergo a delivery procedure that ends during the measurement period |
| Denominator | Inpatient hospitalizations for nulliparous patients delivered of a live term singleton newborn ≥ 37 weeks' gestation The eCQM logic concludes that a patient is nulliparous when ONE of the following is true: <ol style="list-style-type: none"> 1. Parity equals zero 2. Gravidity equals one 3. Preterm and Term births both equal zero. |
| Denominator Exclusions | Inpatient hospitalizations for patients with abnormal presentation or placenta previa during the encounter |
| Numerator | Inpatient hospitalizations for patients who deliver by cesarean section |