

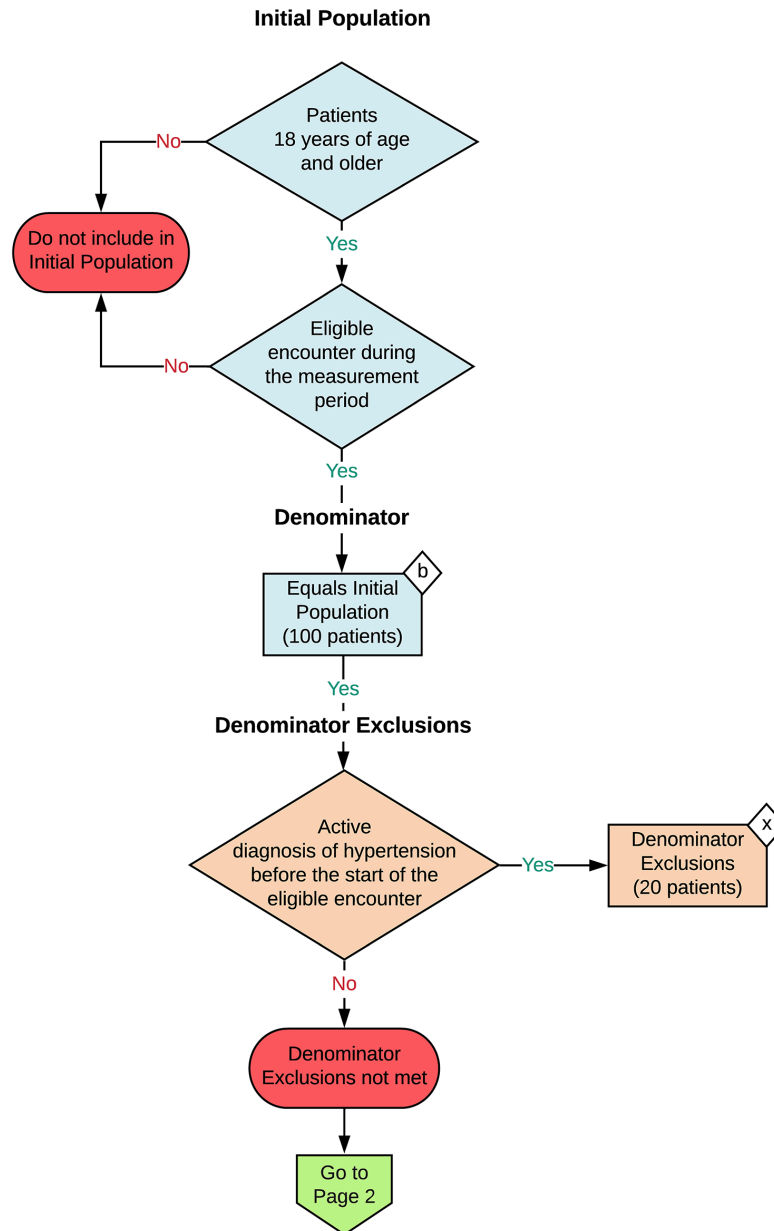
**2024 eCQM Flow**  
**eCQM Identifier: CMS22v12**

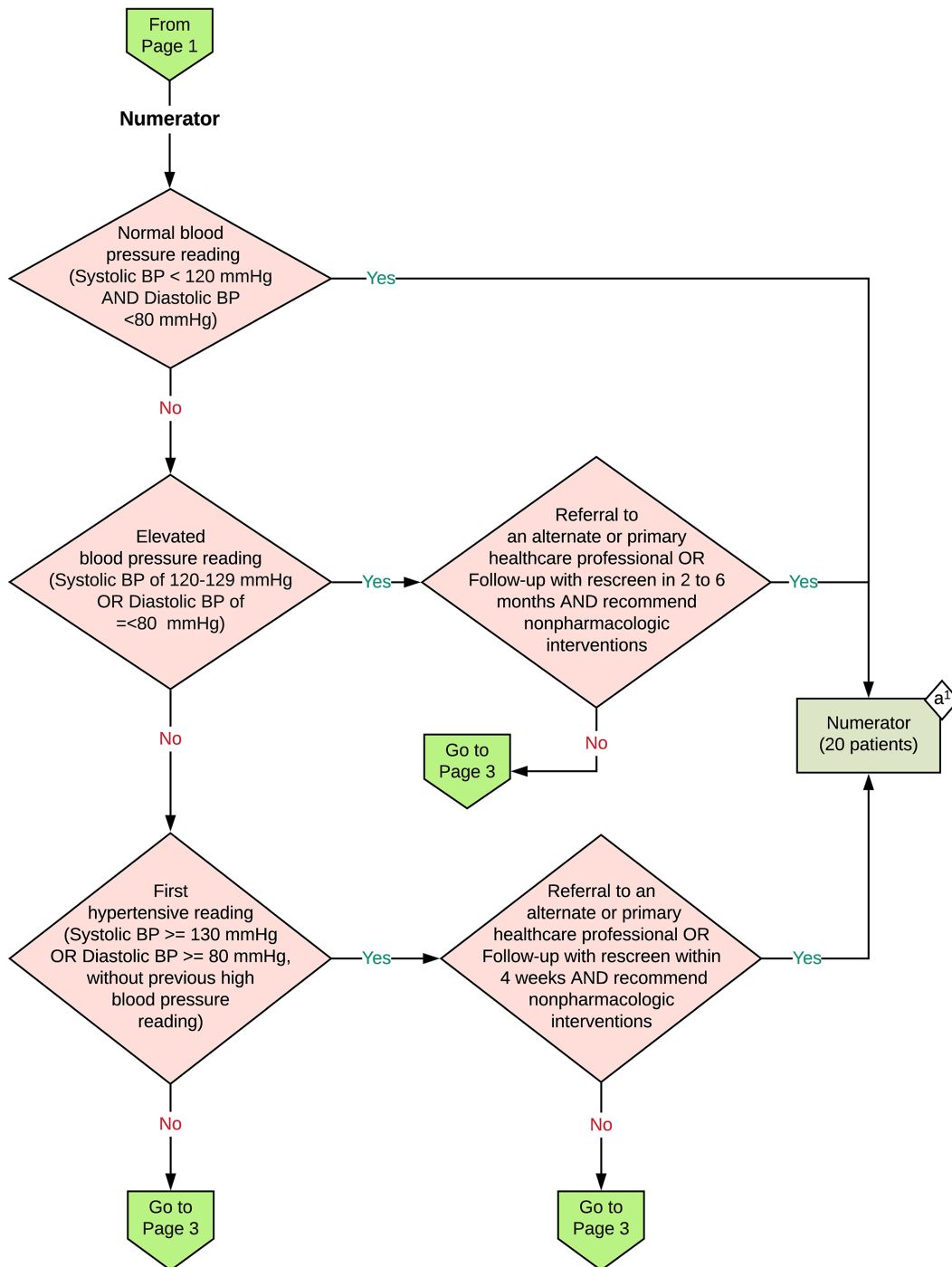
**Preventive Care and Screening: Screening for High Blood Pressure and Follow-Up Documented**

**NOTE:** This flow diagram represents an overview of population criteria requirements. **Refer to the eCQM specification for a complete list of data elements included in this measure and required for submission.**

Percentage of patient visits for patients aged 18 years and older seen during the measurement period who were screened for high blood pressure AND a recommended follow-up plan is documented, as indicated, if blood pressure is elevated or hypertensive.

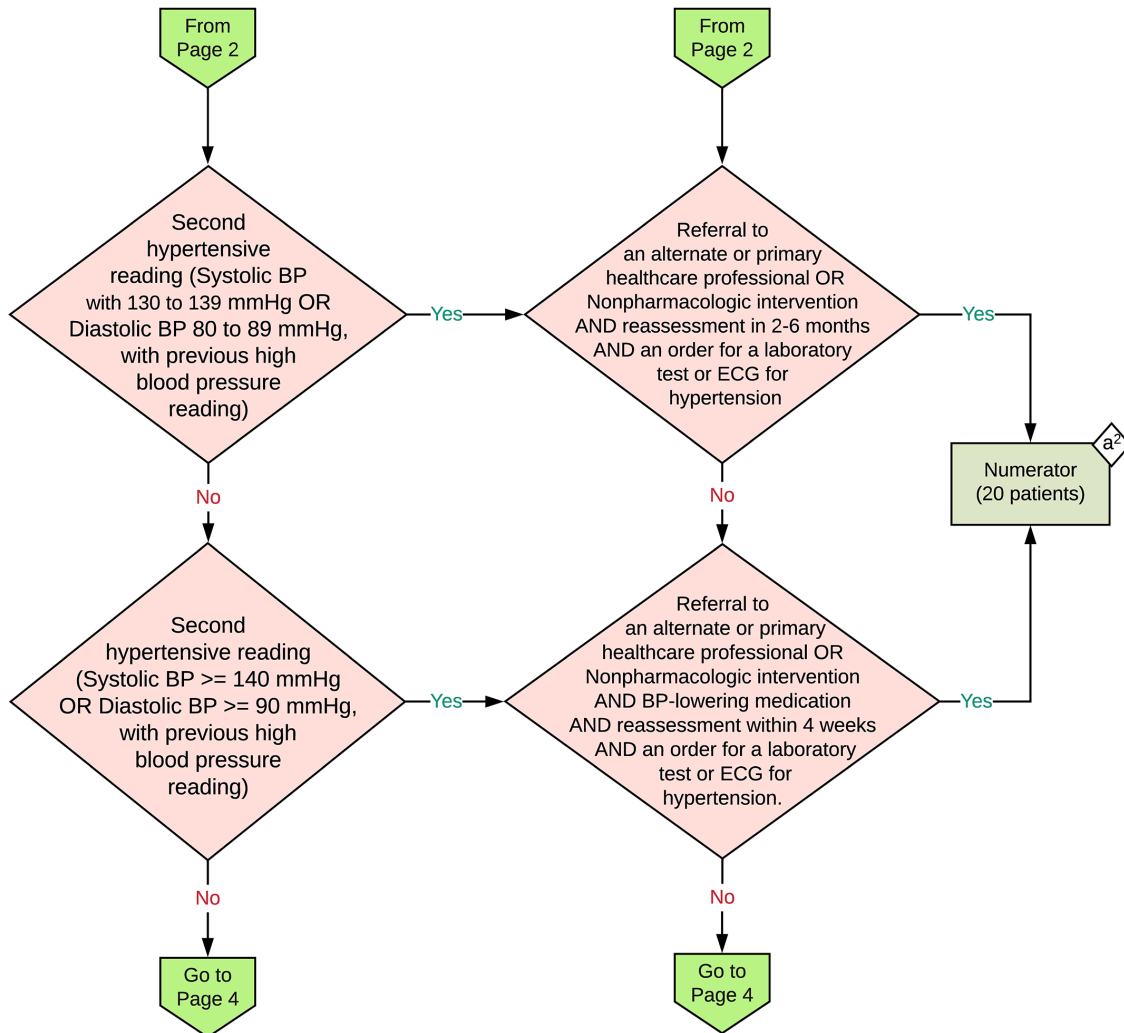
This eCQM is an episode-based measure

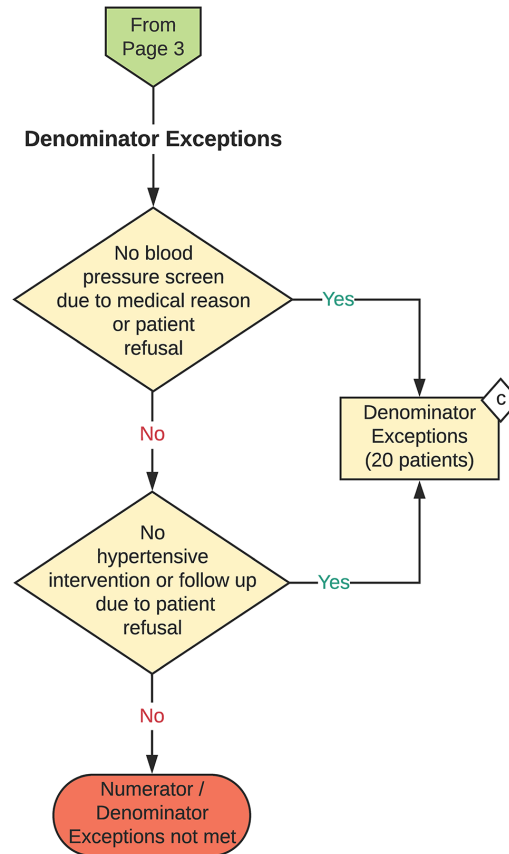




2024 eCQM Flow  
eCQM Identifier: CMS22v12

Preventive Care and Screening: Screening for High Blood Pressure and Follow-Up Documented





**Sample Calculation**

**Performance Rate =**

$$\frac{\text{Numerator (a}^1 + a^2 = 40 \text{ patients)}}{\text{Denominator (b = 100 patients) - Denominator Exclusions (x = 20 patients) - Denominator Exceptions (c = 20 patients)}} = \frac{40}{60} = 67 \%$$

**eCQM Identifier: CMS22v12****eCQM Title: Preventive Care and Screening: Screening for High Blood Pressure and Follow-Up Documented**

**NOTE:** This flow diagram represents an overview of population criteria requirements. Refer to the eCQM specification for a complete list of data elements included in this measure and required for submission.

**Description:** Percentage of patient visits for patients aged 18 years and older seen during the measurement period who were screened for high blood pressure AND a recommended follow-up plan is documented, as indicated, if blood pressure is elevated or hypertensive.

**This eCQM is an episode-based measure.**

**eCQM Flow Narrative****Initial Population**

Start by identifying the Initial Population, which includes eligible encounters for patients 18 years of age and older at the beginning of the measurement period.

**Denominator**

The Denominator equals the Initial Population. In the sample calculation provided at the end of the eCQM flow, the Denominator is equal to 100 patients.

**Denominator Exclusions**

The Denominator Exclusions criteria identify a subset of the Denominator population by excluding encounters for patients with an active diagnosis of hypertension before the start of the eligible encounter. In the sample calculation provided at the end of the eCQM flow, the Denominator Exclusions are equal to 20 patients.

**Numerator**

The Numerator criteria identify a subset of the Denominator population (that did not meet the Denominator Exclusions criteria).

The Numerator criteria include encounters with a normal blood pressure reading (systolic blood pressure less than 120 millimeters of mercury AND diastolic blood pressure less than 80 millimeters of mercury).

The Numerator criteria also include encounters with an elevated blood pressure reading (systolic blood pressure of 120 to 129 millimeters of mercury OR diastolic blood pressure of less than or equal to 80 millimeters of mercury) who had a referral to an alternate provider or primary healthcare professional OR follow-up with rescreen in 2 to 6 months AND recommend nonpharmacologic interventions.

The Numerator criteria also include encounters with a first hypertensive reading (systolic blood pressure greater than or equal to 130 millimeters of mercury OR diastolic blood pressure greater than or equal to 80 millimeters of mercury, without previous high blood pressure reading) who had a referral to an alternate provider or primary healthcare professional OR follow-up with rescreen within 4 weeks AND recommend nonpharmacologic interventions.

The Numerator criteria also include encounters with a second hypertensive reading (systolic blood pressure of 130 to 139 millimeters of mercury OR diastolic blood pressure of 80 to 89 millimeters of mercury, with previous high blood pressure reading) who had a referral to an alternate provider or

primary healthcare professional OR nonpharmacologic intervention AND reassessment in 2-6 months AND an order for a laboratory test or ECG for hypertension.

The Numerator criteria also include encounters with a second hypertensive reading (systolic blood pressure of greater than or equal to 140 millimeters of mercury OR diastolic blood pressure greater than or equal to 90 millimeters of mercury, with previous high blood pressure reading) who had a referral to an alternate provider or primary healthcare professional OR nonpharmacologic intervention AND BP-lowering medication AND reassessment within 4 weeks AND an order for a laboratory test or ECG for hypertension.

In the sample calculation provided at the end of the eCQM flow, the Numerator is equal to 40 patients.

### **Denominator Exceptions**

The Denominator Exceptions criteria identify encounters from the Denominator that did not meet the Numerator population criteria due to no blood pressure screen due to medical reason or patient refusal OR no hypertensive intervention or follow up due to patient refusal. In the sample calculation provided at the end of the eCQM flow, the Denominator Exceptions are equal to 20 patients.

### **Sample Calculation**

A sample calculation is provided to help determine how the measure performance rate is derived. The measure performance rate is calculated by dividing the Numerator (total equals 40 encounters) by the difference between the Denominator (total equals 100 encounters), the Denominator Exclusions (total equals 20 encounters), and the Denominator Exceptions (total equals 20 encounters), which is equal to a score of 67 percent.