

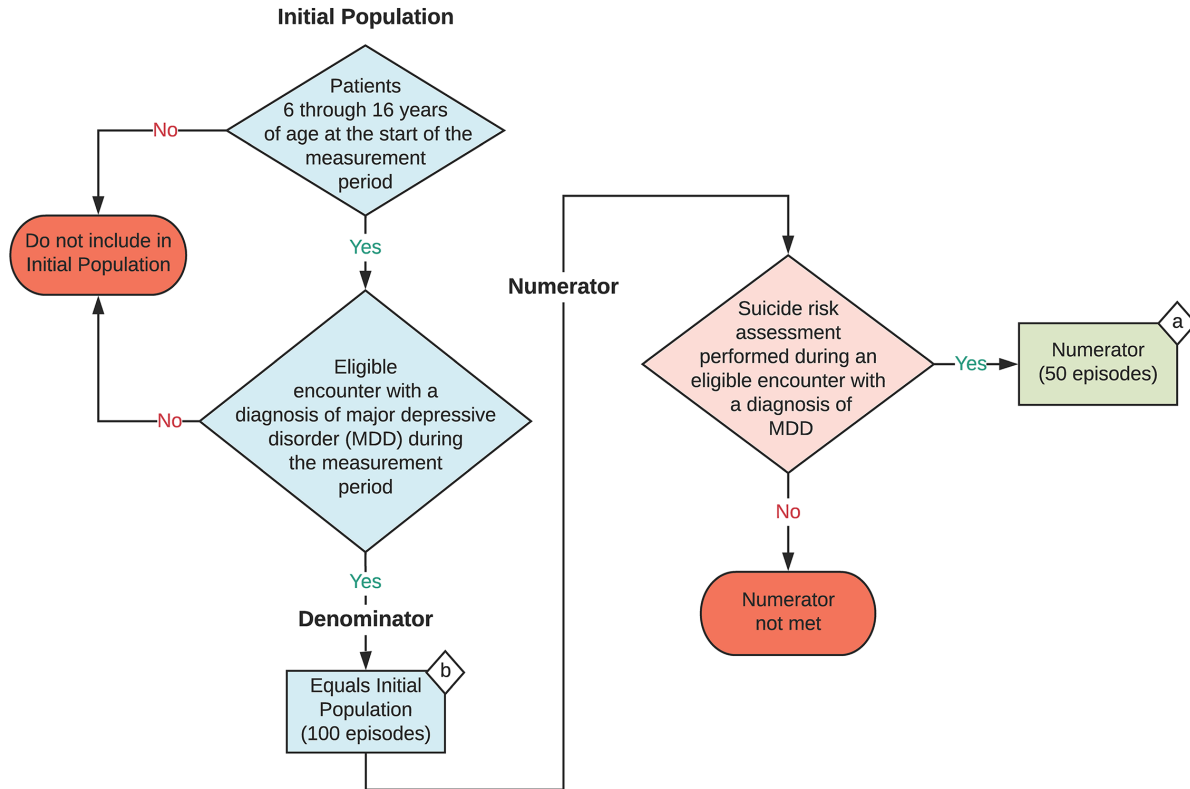
**2024 eCQM Flow**  
**eCQM Identifier: CMS177v12**

**NOTE:** This flow diagram represents an overview of population criteria requirements. **Refer to the eCQM specification for a complete list of data elements included in this measure and required for submission.**

**Child and Adolescent Major Depressive Disorder (MDD):  
 Suicide Risk Assessment**

Percentage of patient visits for those patients aged 6 through 16 at the start of the measurement period with a diagnosis of major depressive disorder with an assessment for suicide risk.

**This eCQM is an episode-based measure**



**Sample Calculation**

**Performance Rate =**

$$\frac{\text{Numerator (a = 50 episodes)}}{\text{Denominator (b = 100 episodes)}} = \frac{50}{100} = 50\%$$

**eCQM Identifier: CMS177v12****eCQM Title: Child and Adolescent Major Depressive Disorder (MDD): Suicide Risk Assessment**

**NOTE:** This flow diagram represents an overview of population criteria requirements. Refer to the eCQM specification for a complete list of data elements included in this measure and required for submission.

**Description:** Percentage of patient visits for those patients aged 6 through 16 at the start of the measurement period with a diagnosis of major depressive disorder with an assessment for suicide risk.

**This eCQM is an episode-based measure.**

**eCQM Flow Narrative****Initial Population**

Start by identifying the Initial Population, which includes eligible encounters with a diagnosis of major depressive disorder (MDD) for patients aged 6 through 16 years of age.

**Denominator**

The Denominator equals the Initial Population. In the sample calculation provided at the end of the eCQM flow, the Denominator is equal to 100 episodes.

**Numerator**

The Numerator criteria identify a subset of the Denominator population by including episodes with a suicide risk assessment performed during the eligible encounter with a diagnosis of MDD. In the sample calculation provided at the end of the eCQM flow, the Numerator is equal to 50 episodes.

**Sample Calculation**

A sample calculation is provided to help determine how the measure performance rate is derived. The measure performance rate is calculated by dividing the Numerator (total equals 50 episodes) by the Denominator (total equals 100 episodes), which is equal to a score of 50 percent in the sample calculation.