

2023 eCQM Flow
eCQM Identifier: CMS159v11
NQF Number: 0710e

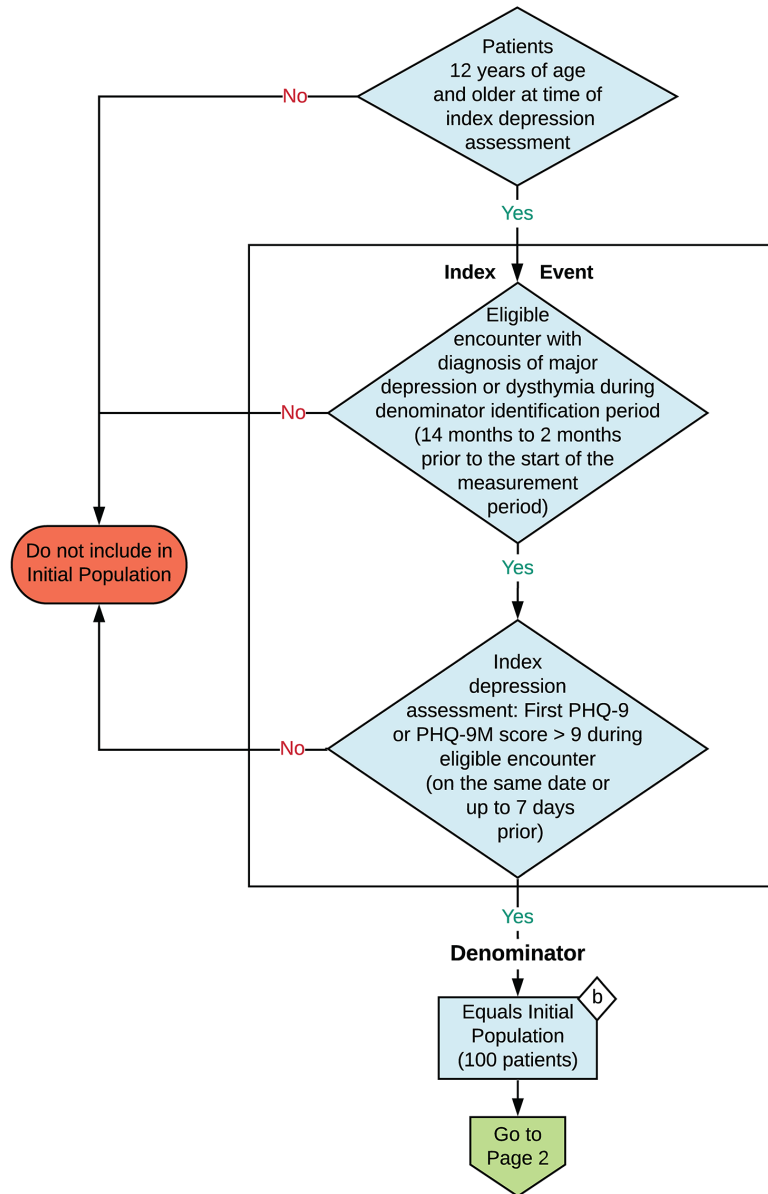
NOTE: This flow diagram represents an overview of population criteria requirements. Refer to the eCQM specification for a complete list of data elements included in this measure and required for submission.

Depression Remission at Twelve Months

The percentage of adolescent patients 12 to 17 years of age and adult patients 18 years of age or older with major depression or dysthymia who reached remission 12 months (+/- 60 days) after an index event

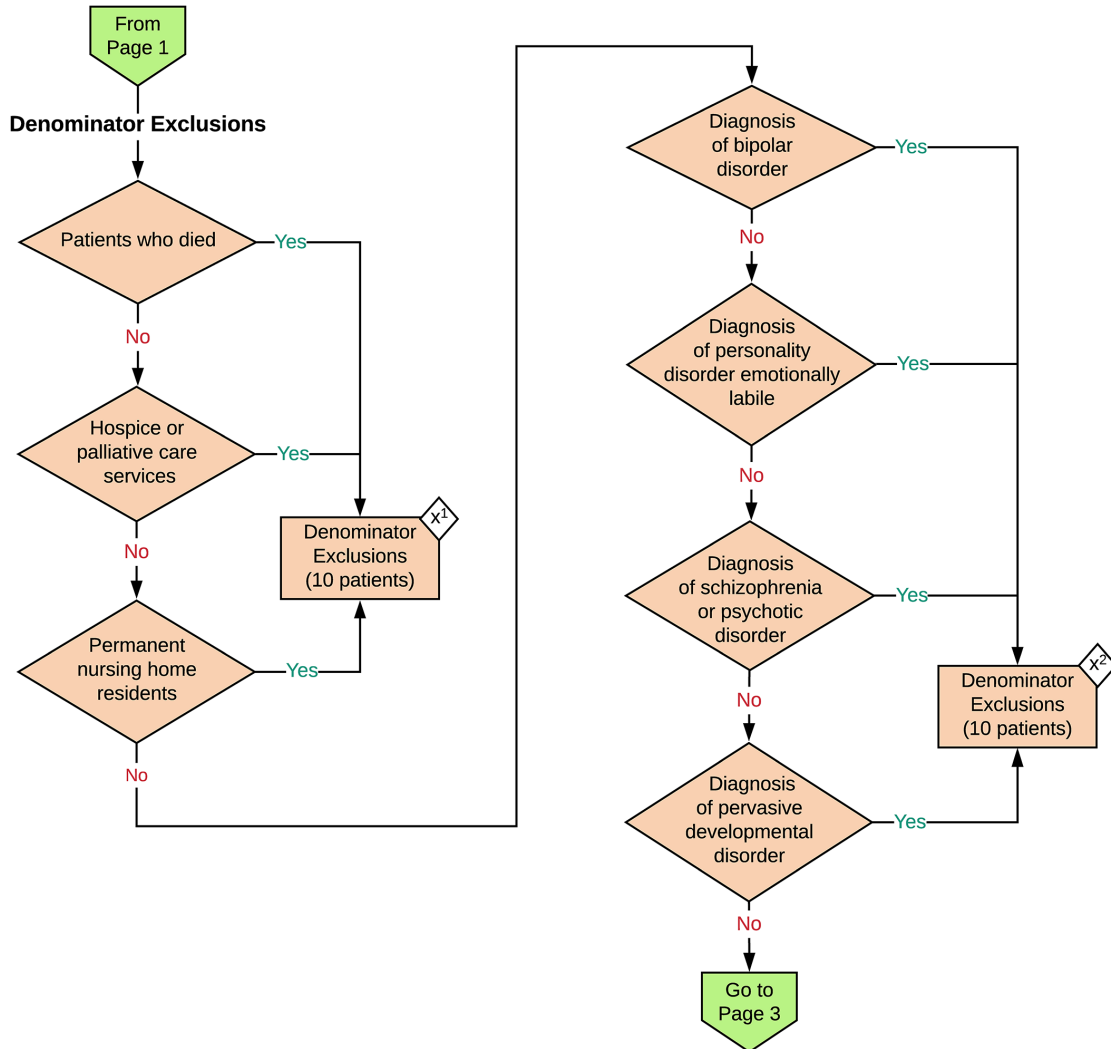
This eCQM is a patient-based measure

Initial Population



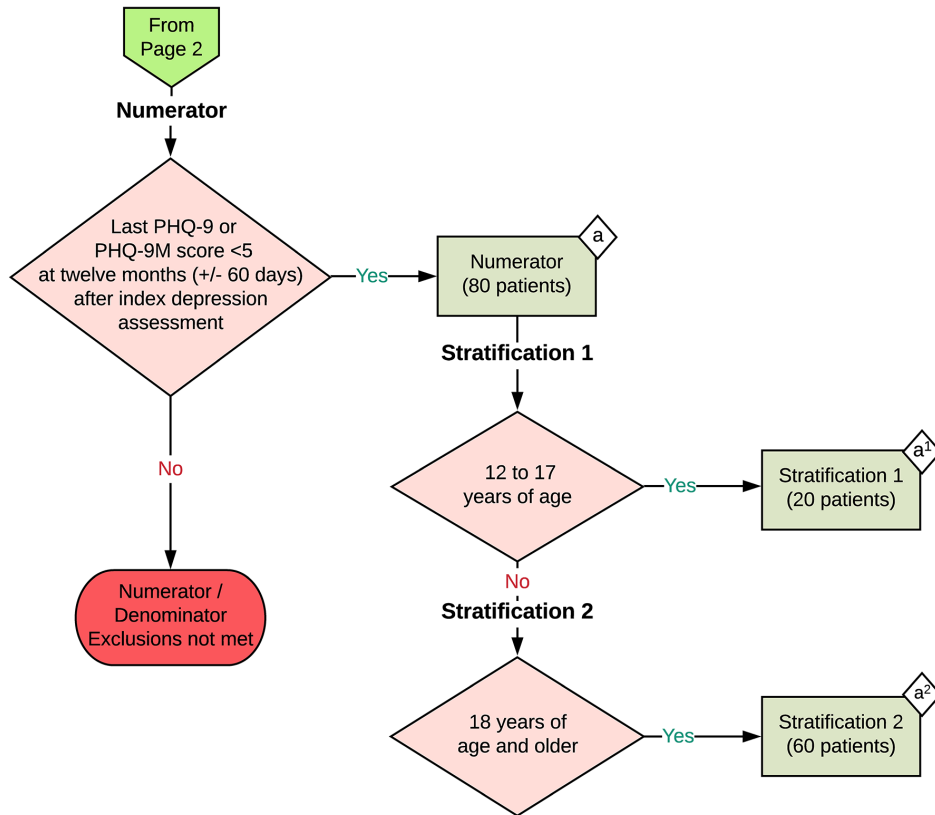
2023 eCQM Flow
 eCQM Identifier: CMS159v11
 NQF Number: 0710e

Depression Remission at Twelve Months



2023 eCQM Flow
 eCQM Identifier: CMS159v11
 NQF Number: 0710e

Depression Remission at Twelve Months



Sample Calculation:

Performance Rate =

$$\frac{\text{Numerator (a = 80 patients)}}{\text{Denominator (b = 100 patients) - Denominator Exclusions (x}^1\text{ + x}^2\text{ = 20 patients)}} = \frac{80}{80} = 100\%$$

Stratification 1 =

$$\frac{\text{Numerator (a}^1\text{ = 20 patients)}}{\text{Denominator (b = 100 patients) - Denominator Exclusions (x}^1\text{ + x}^2\text{ = 20 patients)}} = \frac{20}{80} = 25\%$$

Stratification 2 =

$$\frac{\text{Numerator (a}^2\text{ = 60 patients)}}{\text{Denominator (b = 100 patients) - Denominator Exclusions (x}^1\text{ + x}^2\text{ = 20 patients)}} = \frac{60}{80} = 75\%$$

eCQM Identifier: CMS159v11
NQF Number: 0710e
eCQM Title: Depression Remission at Twelve Months

NOTE: This flow diagram represents an overview of population criteria requirements. Refer to the eCQM specification for a complete list of data elements included in this measure and required for submission.

Description: The percentage of adolescent patients 12 to 17 years of age and adult patients 18 years of age or older with major depression or dysthymia who reached remission 12 months (+/- 60 days) after an index event.

This eCQM is a patient-based measure.

eCQM Flow Narrative

Initial Population

Start by identifying the Initial Population, which includes patients 12 years of age and older at time of the index depression assessment who had an Index Event that includes an eligible encounter with diagnosis of major depression or dysthymia during the denominator identification period (14 months to 2 months prior to the start of the measurement period) and an index depression assessment, which is the first Patient Health Questionnaire 9 (PHQ-9) or Patient Health Questionnaire 9 Modified for Teens (PHQ-9M) score greater than nine during the eligible encounter (on the same date or up to 7 days prior).

Denominator

The Denominator equals the Initial Population. In the sample calculation provided at the end of the eCQM flow, the Denominator is equal to 100 patients.

Denominator Exclusions

The Denominator Exclusions criteria identify a subset of the Denominator population by excluding patients who died, received hospice or palliative care services, were permanent nursing home residents, had a diagnosis of bipolar disorder, had a diagnosis of personality disorder emotionally labile, had a diagnosis of schizophrenia or psychotic disorder, or had a diagnosis of pervasive developmental disorder. In the sample calculation provided at the end of the eCQM flow, the Denominator Exclusions are equal to 20 patients.

Numerator

The Numerator criteria identify a subset of the Denominator population (that did not meet the Denominator Exclusions criteria) by including patients whose last PHQ-9 or PHQ-9M score was less than five at twelve months (plus or minus 60 days) after the index depression assessment. In the sample calculation provided at the end of the eCQM flow, the Numerator is equal to 80 patients.

Stratification 1

There are two strata for reporting separately by age group. Stratification 1 includes patients 12 to 17 years of age. In the sample calculation provided at the end of the eCQM flow, Stratification 1 is equal to 20 patients.

Stratification 2

There are two strata for reporting separately by age group. Stratification 2 includes patients 18 years of age and older. In the sample calculation provided at the end of the eCQM flow, Stratification 2 is equal to 60 patients.

Sample Calculation

A sample calculation is provided to help determine how the measure performance rate is derived. The measure performance rate is calculated by dividing the Numerator (total equals 80 patients) by the difference between the Denominator (total equals 100 patients) and the Denominator Exclusions (total equals 20 patients), which is equal to a score of 100 percent. Stratification 1 is calculated by dividing the Numerator of Stratification 1 (total equals 20 patients) by the difference between the Denominator (total equals 100 patients) and the Denominator Exclusions (total equals 20 patients), which is equal to a score of 25 percent. Stratification 2 is calculated by dividing the Numerator of Stratification 2 (total equals 60 patients) by the difference between the Denominator (total equals 100 patients) and the Denominator Exclusions (total equals 20 patients), which is equal to a score of 75 percent.