

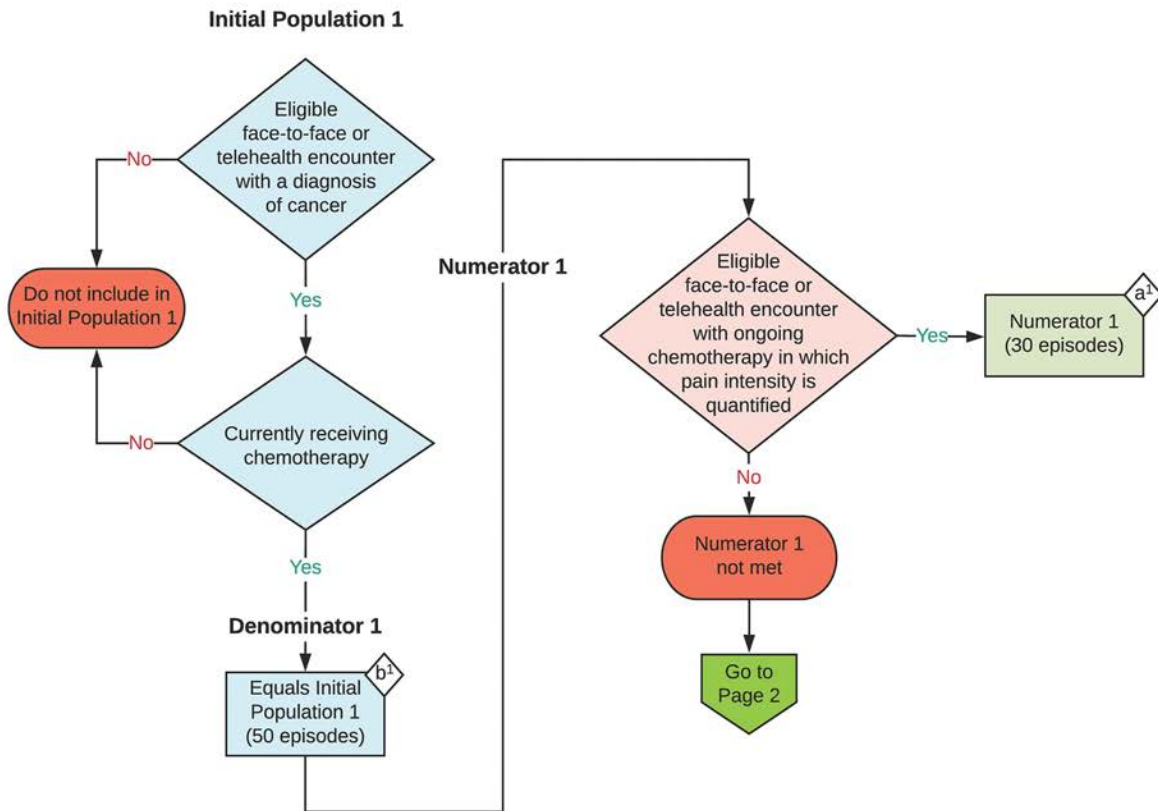
2025 eCQM Flow
eCQM Identifier: CMS157v13
CBE Number: 0384e

NOTE: This flow diagram represents an overview of population criteria requirements. Refer to the eCQM specification for a complete list of data elements included in this measure and required for submission.

Oncology: Medical and Radiation - Pain Intensity Quantified

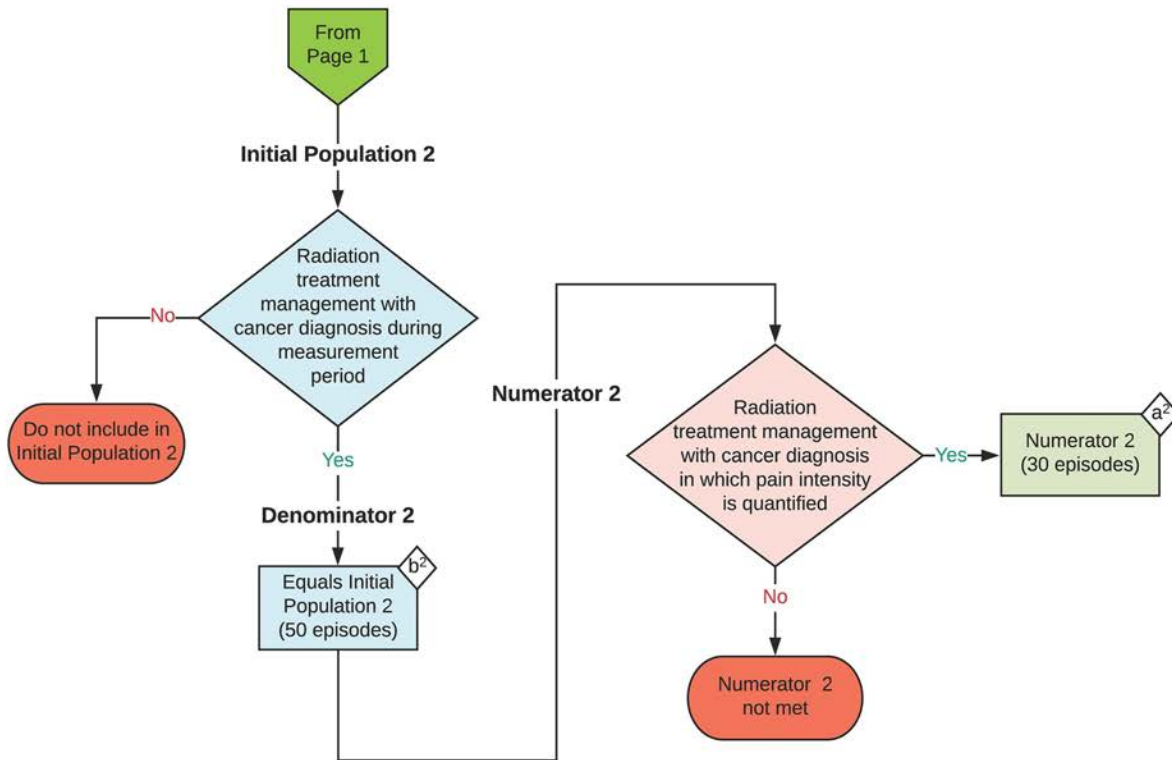
Percentage of patient visits, regardless of patient age, with a diagnosis of cancer currently receiving chemotherapy or radiation therapy in which pain intensity is quantified

This eCQM is an episode-based measure



2025 eCQM Flow
 eCQM Identifier: CMS157v13
 CBE Number: 0384e

Oncology: Medical and Radiation - Pain Intensity Quantified



Sample Calculation

Performance Rate* (Population 1 and 2) =

$$\frac{\text{Numerator (a}^1 + \text{a}^2 = 60 \text{ episodes)}}{\text{Denominator (b}^1 + \text{b}^2 = 100 \text{ episodes)}} = \frac{60}{100} = 60\%$$

*This eCQM is intended to have one performance rate

eCQM Identifier: CMS157v13

CBE Number: 0384e

eCQM Title: Oncology: Medical and Radiation - Pain Intensity Quantified

NOTE: This flow diagram represents an overview of population criteria requirements. Refer to the eCQM specification for a complete list of data elements included in this measure and required for submission.

Description: Percentage of patient visits, regardless of patient age, with a diagnosis of cancer currently receiving chemotherapy or radiation therapy in which pain intensity is quantified.

This eCQM is an episode-based measure.

eCQM Flow Narrative

Initial Population 1

Start by identifying the Initial Population 1, which includes a diagnosis of cancer that overlaps the face-to-face or telehealth encounter during the measurement period with ongoing chemotherapy (i.e., chemotherapy administered on the same day as the eligible encounter or during the 30 days before the date of the eligible encounter AND during the 30 days after the date of the eligible encounter).

Denominator 1

Denominator 1 is equal to the Initial Population 1. In the sample calculation provided at the end of the eCQM flow, Denominator 1 is equal to 50 episodes.

Numerator 1

The Numerator 1 criteria identify a subset of the Denominator 1 population by including ongoing chemotherapy in which pain intensity quantified during face-to-face or telehealth encounter. In the sample calculation provided at the end of the eCQM flow, Numerator 1 is equal to 30 episodes.

Initial Population 2

Start by identifying the Initial Population 2, which includes a diagnosis of cancer that overlaps the radiation treatment management encounter during measurement period.

Denominator 2

Denominator 2 is equal to the Initial Population 2. In the sample calculation provided at the end of the eCQM flow, Denominator 2 is equal to 50 episodes.

Numerator 2

The Numerator 2 criteria identify a subset of the Denominator 2 population by including pain intensity quantified during a radiation treatment management encounter (CPT codes 77427, 77431, 77432, and 77435) or within the 6 days prior to the radiation treatment management encounter (CPT code 77427 only). In the sample calculation provided at the end of the eCQM flow, Numerator 2 is equal to 30 episodes.

Sample Calculation

A sample calculation is provided to help determine how the measure performance rate is derived. The measure performance rate is calculated by summing Numerator 1 and Numerator 2 (total equals 60 episodes) then dividing by the sum of Denominator 1 and Denominator 2 (total equals 100 episodes), which is equal to a score of 60 percent.