

**2023 eCQM Flow**  
**eCQM Identifier: CMS124v11**

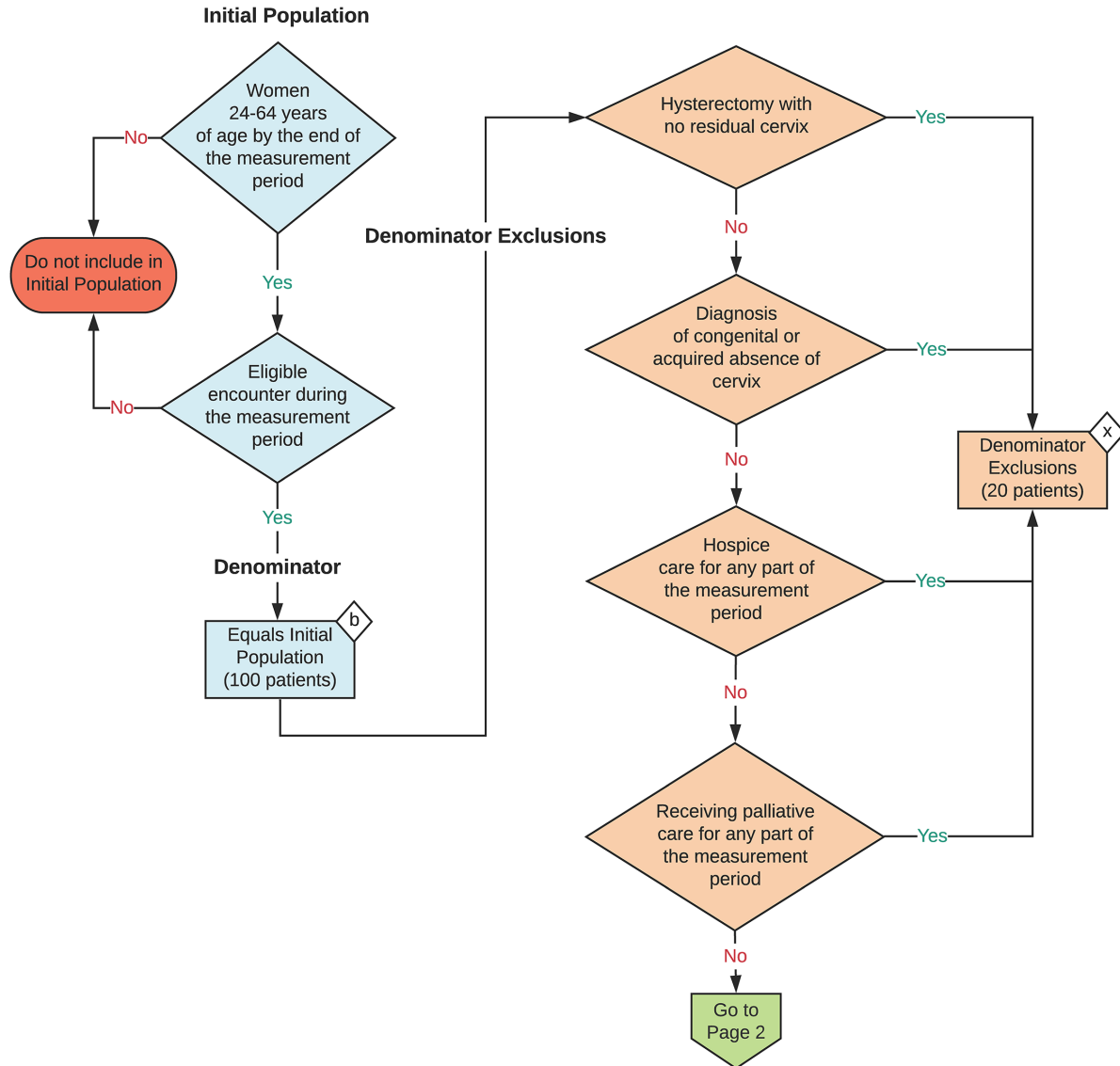
**NOTE:** This flow diagram represents an overview of population criteria requirements. **Refer to the eCQM specification for a complete list of data elements included in this measure and required for submission.**

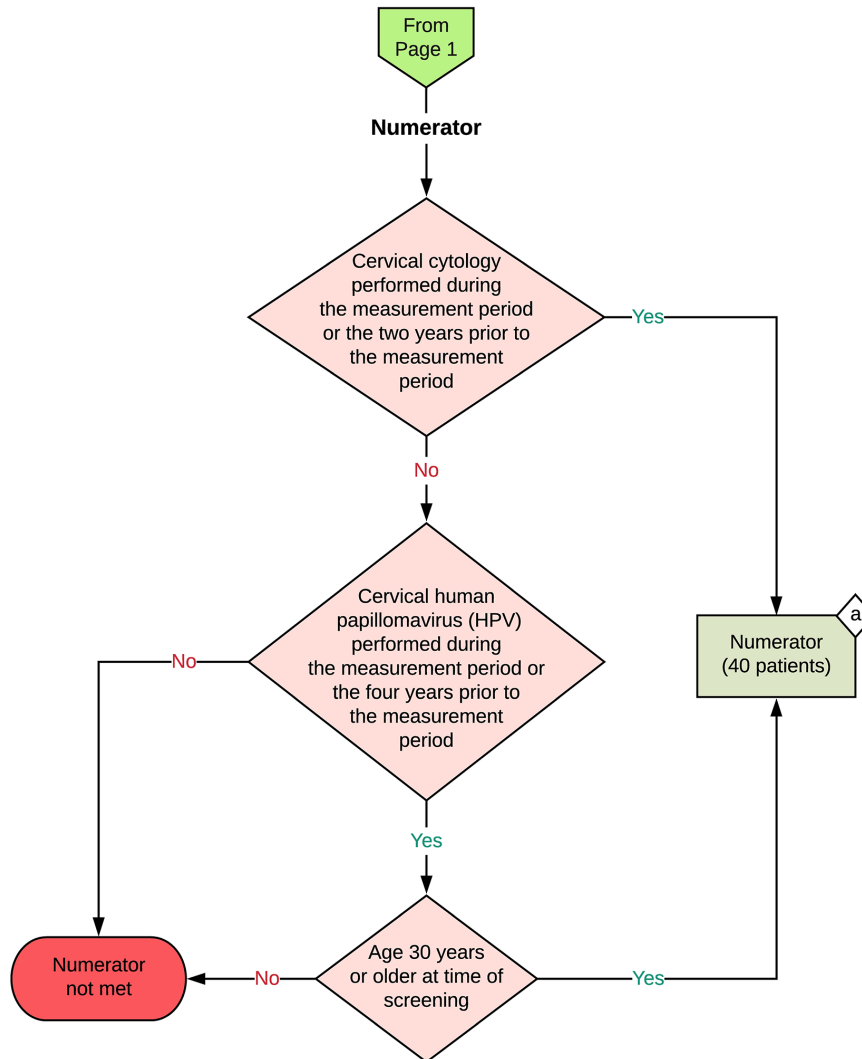
**Cervical Cancer Screening**

Percentage of women 21-64 years of age who were screened for cervical cancer using either of the following criteria:

- \* Women age 21-64 who had cervical cytology performed within the last 3 years
- \* Women age 30-64 who had cervical human papillomavirus (HPV) testing performed within the last 5 years

**This eCQM is a patient-based measure**





**Sample Calculation**

**Performance Rate =**

$$\frac{\text{Numerator (a = 40 patients)}}{\text{Denominator (b = 100 patients) - Denominator Exclusions (x = 20 patients)}} = \frac{40}{80} = 50\%$$

**eCQM Identifier: CMS124v11**  
**eCQM Title: Cervical Cancer Screening**

**NOTE:** This flow diagram represents an overview of population criteria requirements. Refer to the eCQM specification for a complete list of data elements included in this measure and required for submission.

**Description:** Percentage of women 21 to 64 years of age who were screened for cervical cancer using either of the following criteria:

- Women age 21 to 64 who had cervical cytology performed within the last 3 years.
- Women age 30 to 64 who had cervical human papillomavirus (HPV) testing performed within the last 5 years.

**This eCQM is a patient-based measure.**

**eCQM Flow Narrative**

**Initial Population**

Start by identifying the Initial Population, which includes women 24 to 64 years of age by the end of the measurement period with an eligible encounter during the measurement period.

**Denominator**

The Denominator equals the Initial Population. In the sample calculation provided at the end of the eCQM flow, the Denominator is equal to 100 patients.

**Denominator Exclusions**

The Denominator Exclusions criteria identify a subset of the Denominator population by excluding women who had a hysterectomy with no residual cervix, had a diagnosis of congenital or acquired absence of cervix, who are in hospice care for any part of the measurement period, or whose palliative care overlaps the measurement period. In the sample calculation provided at the end of the eCQM flow, the Denominator Exclusions are equal to 20 patients.

**Numerator**

The Numerator criteria identify a subset of the Denominator population (that did not meet the Denominator Exclusions criteria) by including women who had cervical cytology performed during the measurement period or the two years prior to the measurement period, or women who had cervical human papillomavirus (HPV) testing performed during the measurement period or the four years prior to the measurement period (for women who are at least 30 years old at the time of screening). In the sample calculation provided at the end of the eCQM flow, the Numerator is equal to 40 patients.

**Sample Calculation**

A sample calculation is provided to help determine how the measure performance rate is derived. The measure performance rate is calculated by dividing the Numerator (total equals 40 patients) by the difference between the Denominator (total equals 100 patients) and the Denominator Exclusions (total equals 20 patients), which is equal to a score of 50 percent.