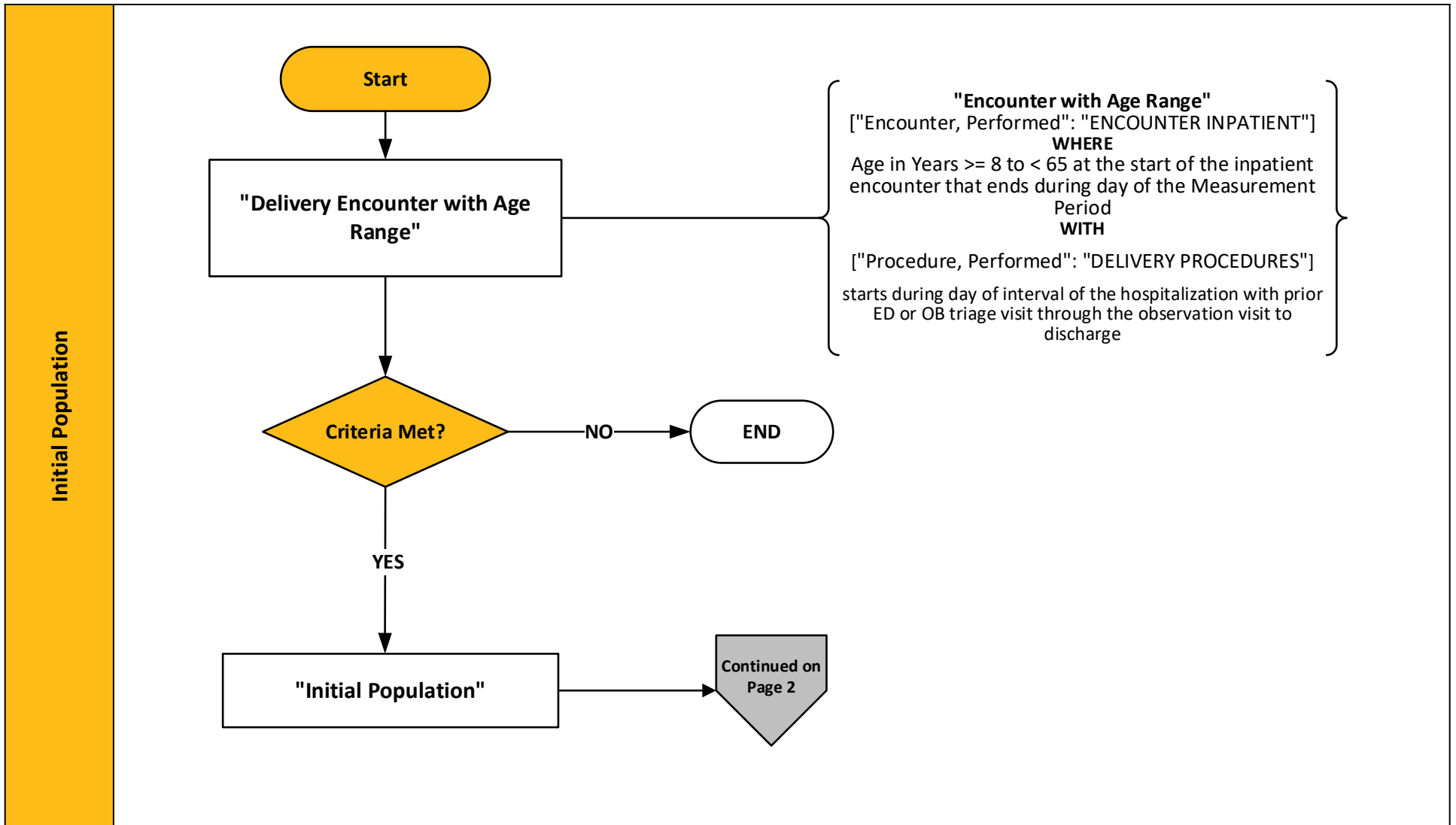


# 2024 eCQM Flow – CMS1028v2: Severe Obstetric Complications (PC-07)\*

\*This flow diagram represents an overview of population criteria requirements. Please refer to the eCQM measure specification for a complete list of definitions, direct reference codes, data or timing elements included in this measure and required for submission.

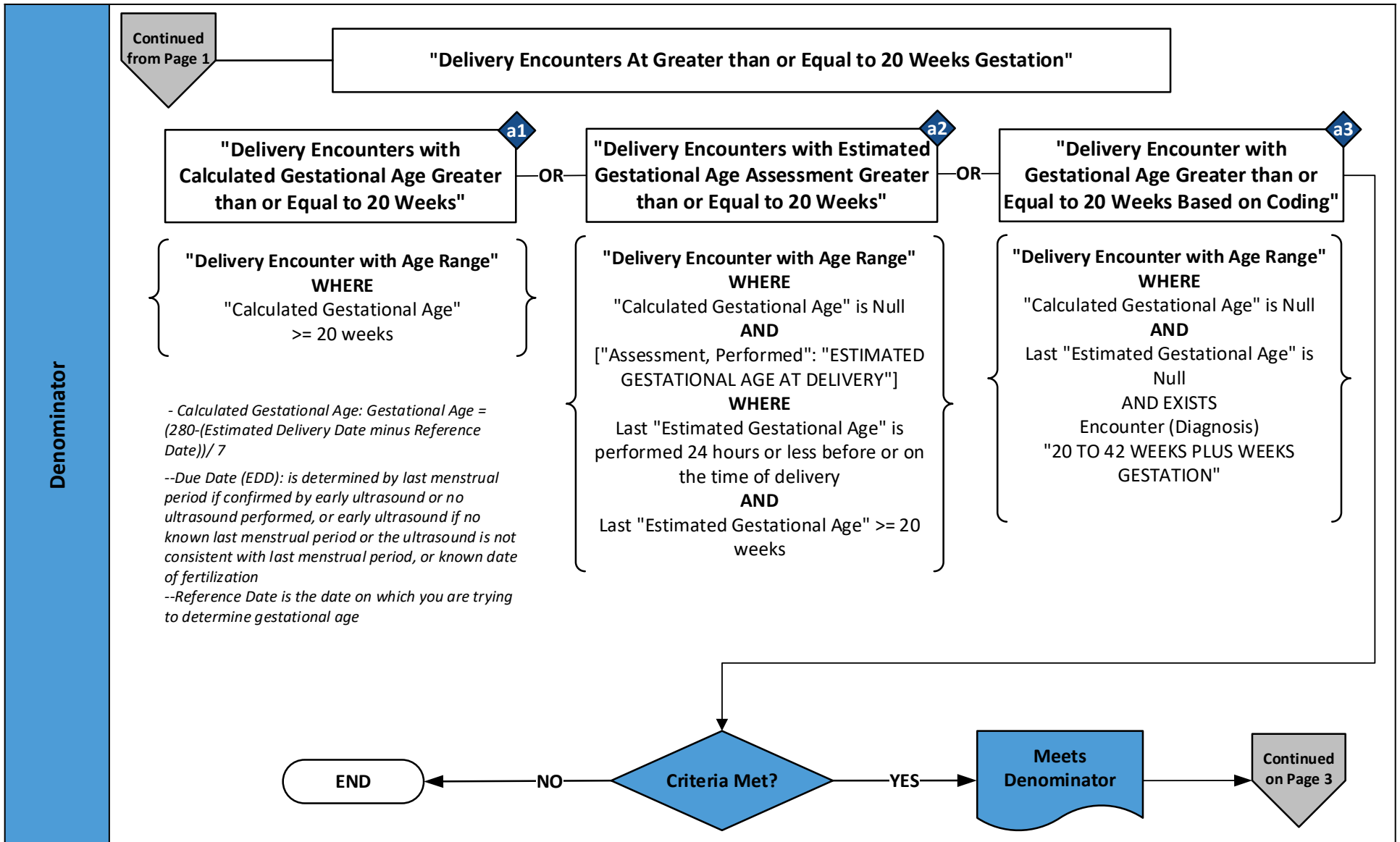
## Measure Flow Diagram



# 2024 eCQM Flow – CMS1028v2: Severe Obstetric Complications (PC-07)\*

\*This flow diagram represents an overview of population criteria requirements. Please refer to the eCQM measure specification for a complete list of definitions, direct reference codes, data or timing elements included in this measure and required for submission.

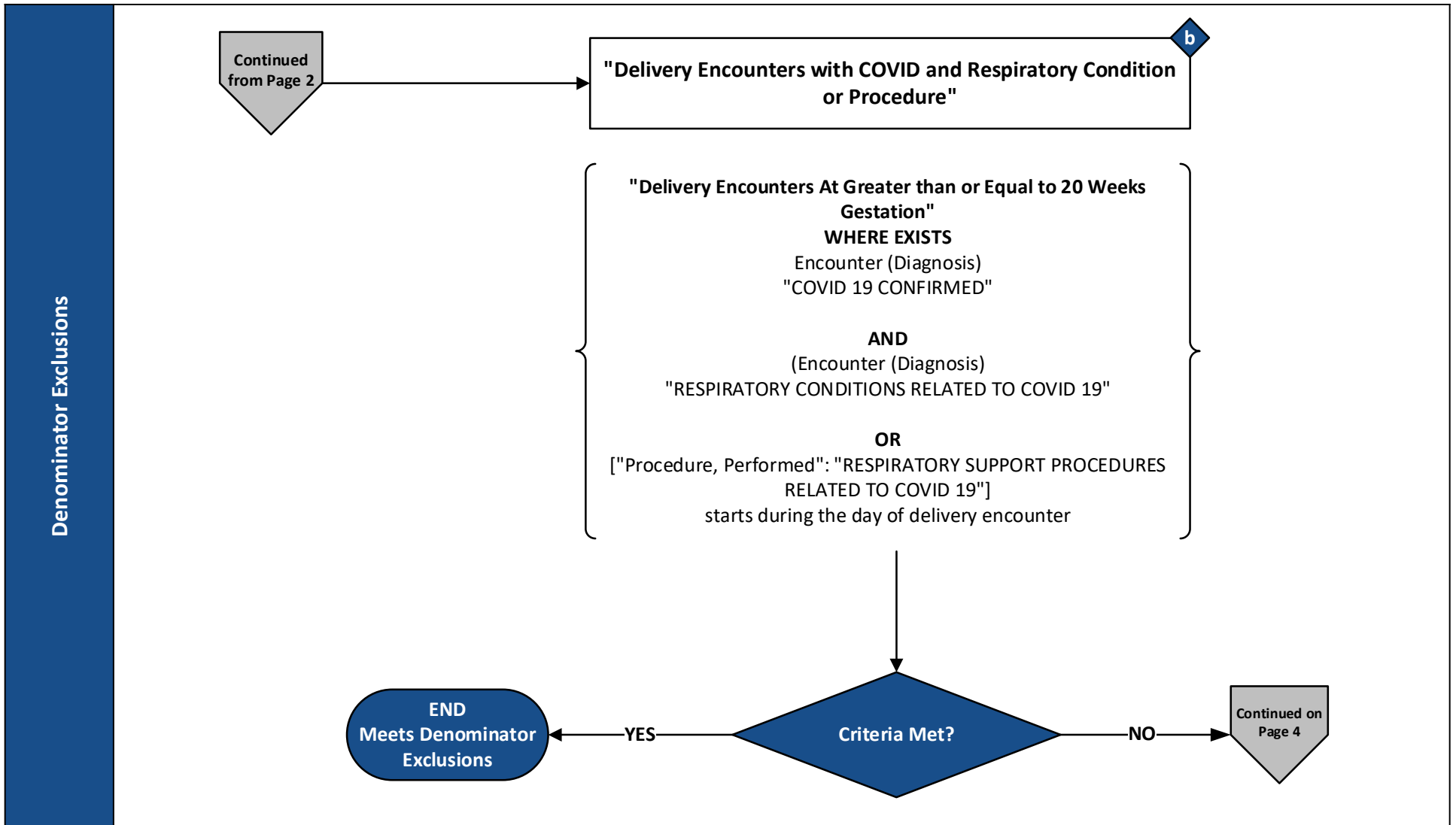
## Measure Flow Diagram (Continued)



# 2024 eCQM Flow – CMS1028v2: Severe Obstetric Complications (PC-07)\*

\*This flow diagram represents an overview of population criteria requirements. Please refer to the eCQM measure specification for a complete list of definitions, direct reference codes, data or timing elements included in this measure and required for submission.

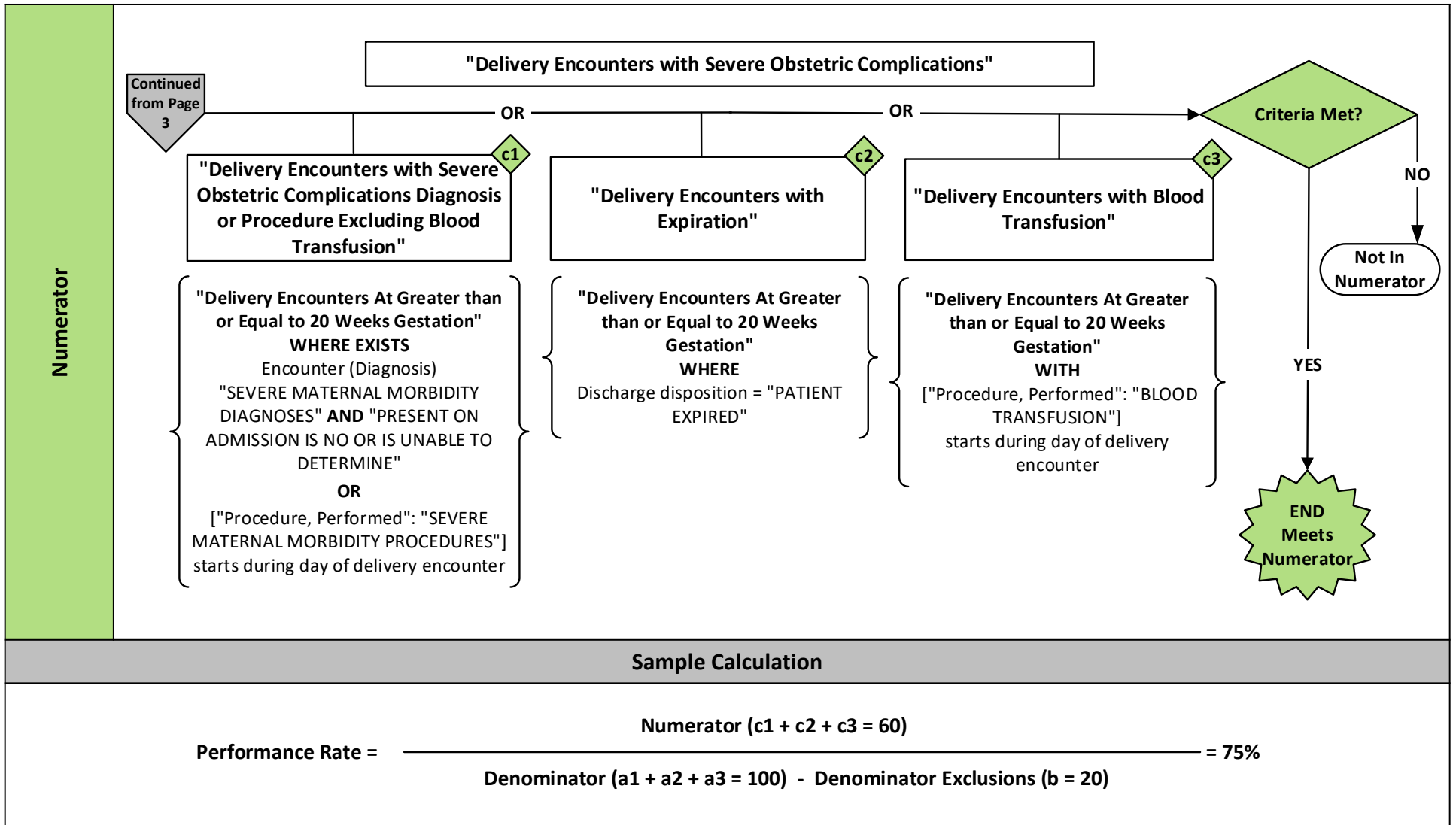
## Measure Flow Diagram (Continued)



# 2024 eCQM Flow – CMS1028v2: Severe Obstetric Complications (PC-07)\*

\*This flow diagram represents an overview of population criteria requirements. Please refer to the eCQM measure specification for a complete list of definitions, direct reference codes, data or timing elements included in this measure and required for submission.

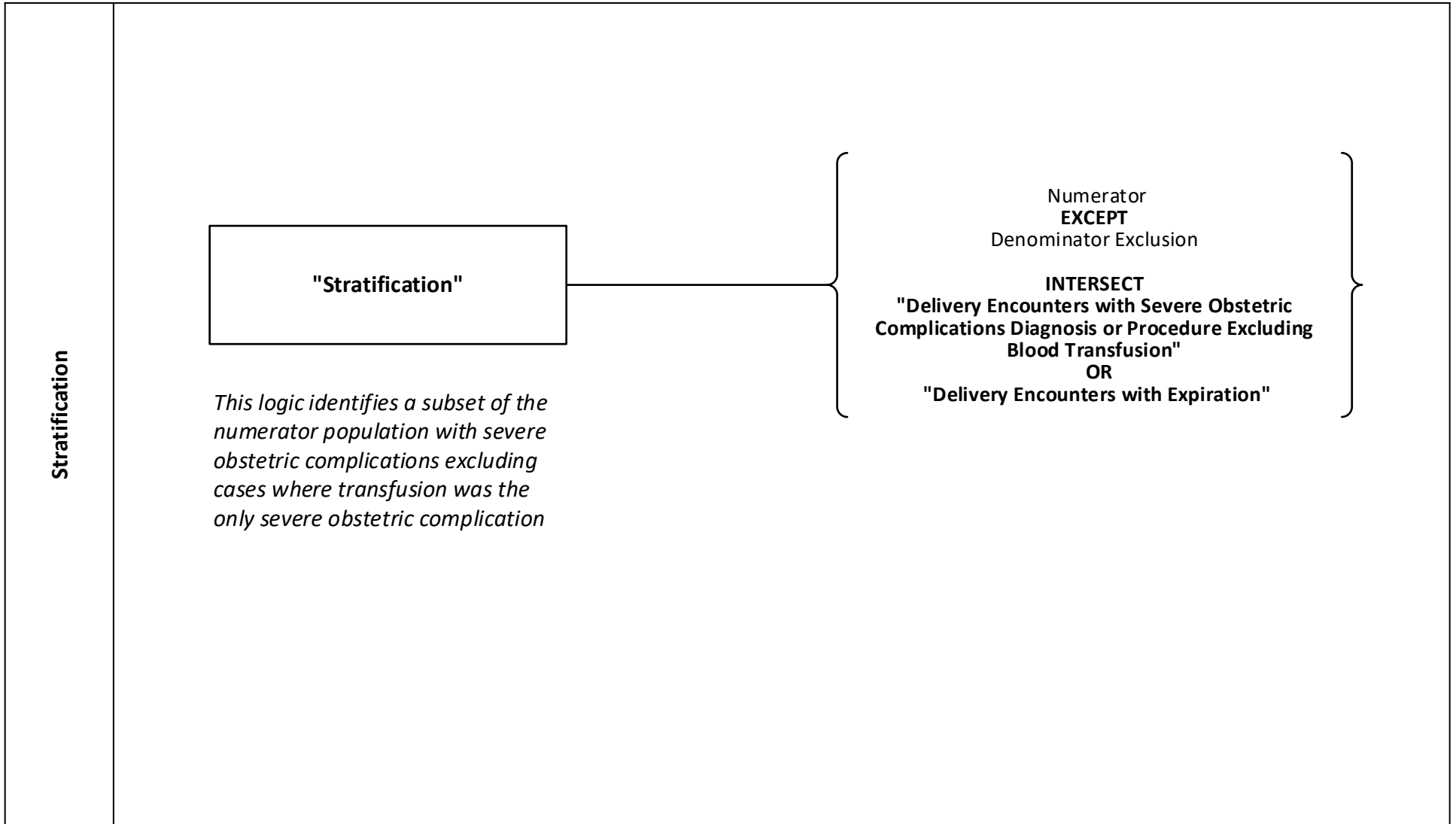
## Measure Flow Diagram (Continued)



## 2024 eCQM Flow – CMS1028v2: Severe Obstetric Complications (PC-07)\*

\*This flow diagram represents an overview of population criteria requirements. Please refer to the eCQM measure specification for a complete list of definitions, direct reference codes, data or timing elements included in this measure and required for submission.

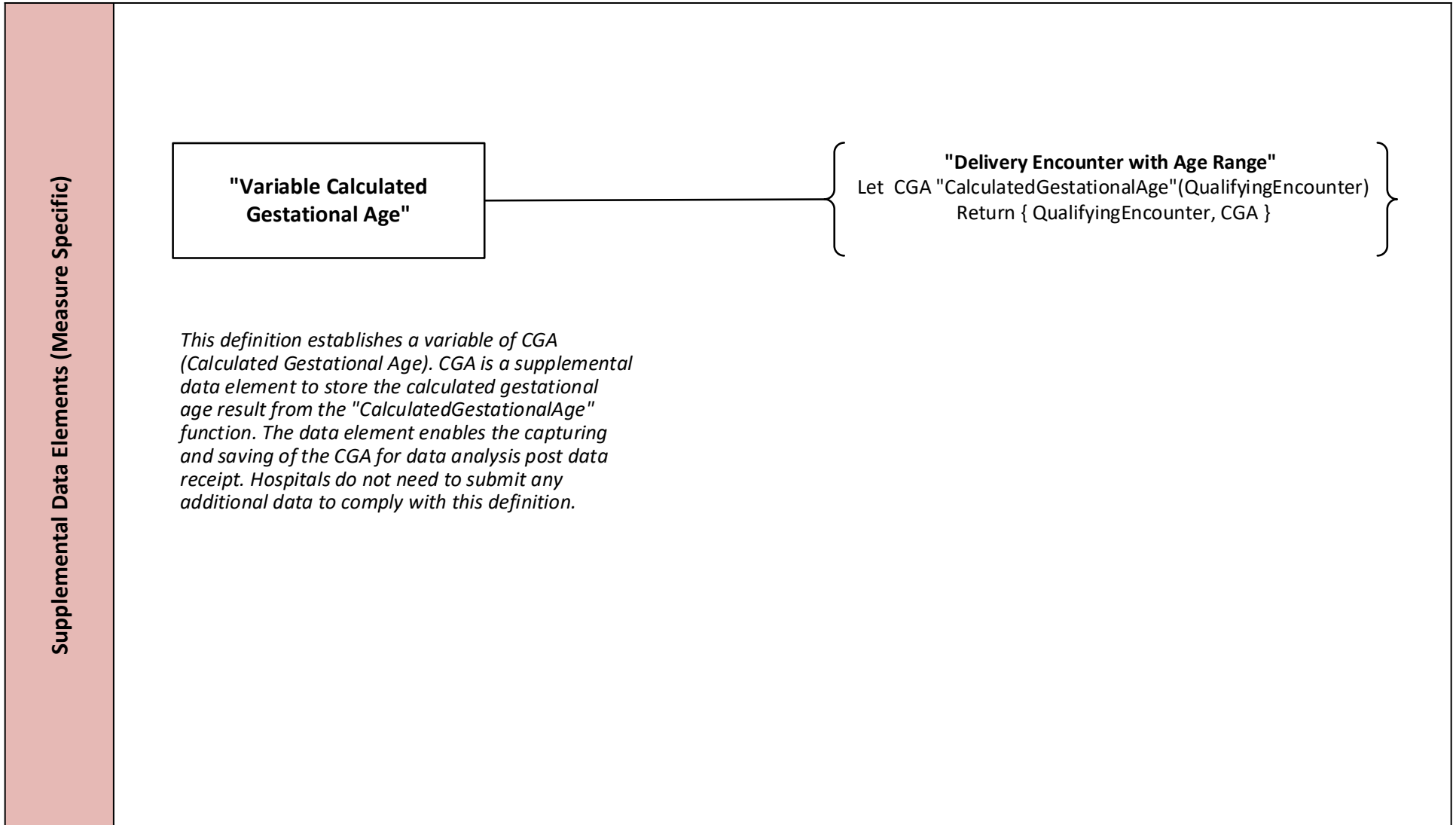
### Measure Flow Diagram (Continued)



## 2024 eCQM Flow – CMS1028v2: Severe Obstetric Complications (PC-07)\*

\*This flow diagram represents an overview of population criteria requirements. Please refer to the eCQM measure specification for a complete list of definitions, direct reference codes, data or timing elements included in this measure and required for submission.

### Measure Flow Diagram (Continued)



## 2024 eCQM Flow – CMS1028v2: Severe Obstetric Complications (PC-07)\*

*\*This flow diagram represents an overview of population criteria requirements. Please refer to the eCQM measure specification for a complete list of definitions, direct reference codes, data or timing elements included in this measure and required for submission.*

### Measure Flow Narrative

The measure flow diagram on the preceding pages illustrates the steps to determine the population criteria for this measure.

|                               |  |
|-------------------------------|--|
| <b>Measure Description</b>    | This measure is reported as the overall rate of patients with severe obstetric complications which occur during the inpatient delivery hospitalization.  |
| <b>Initial Population</b>     | Inpatient hospitalizations for patients age $\geq 8$ years and $< 65$ admitted to the hospital for inpatient acute care who undergo a delivery procedure with a discharge date that ends during the measurement period   |
| <b>Denominator</b>            | Inpatient hospitalizations for patients delivering stillborn or live birth with $\geq 20$ weeks, 0 days gestation completed  |
| <b>Denominator Exclusions</b> | Inpatient hospitalizations for patients with confirmed diagnosis of COVID with COVID-related respiratory condition or patients with confirmed diagnosis of COVID with COVID-related respiratory procedure  |
| <b>Numerator</b>              | Inpatient hospitalizations for patients with severe obstetric complications (not present on admission that occur during the current delivery encounter) including the following: <ul style="list-style-type: none"> <li>• Severe maternal morbidity diagnoses</li> <li>• Severe maternal morbidity procedures</li> <li>• Discharge disposition of expired</li> </ul> |

## 2024 eCQM Flow – CMS1028v2: Severe Obstetric Complications (PC-07)\*

\*This flow diagram represents an overview of population criteria requirements. Please refer to the eCQM measure specification for a complete list of definitions, direct reference codes, data or timing elements included in this measure and required for submission.

### Measure Flow Narrative (Continued)

The measure flow diagram on the preceding pages illustrates the steps to determine the population criteria for this measure.

|                         |  |
|-------------------------|--|
| <b>Stratification I</b> | <p>Delivery hospitalizations with severe obstetric complications excluding hospitalizations where transfusion was the only severe obstetric complication.</p>  |
| <b>Risk Adjustment</b>  | <p>Pre-existing conditions and variables must be present on admission:</p> <ul style="list-style-type: none"> <li>• <i>Anemia</i></li> <li>• <i>Asthma</i></li> <li>• <i>Autoimmune Disease</i></li> <li>• <i>Bariatric Surgery</i></li> <li>• <i>Bleeding disorder</i></li> <li>• <i>Cardiac Disease</i></li> <li>• <i>Gastrointestinal Disease</i></li> <li>• <i>Gestational Diabetes</i></li> <li>• <i>HIV</i></li> <li>• <i>Housing Instability</i></li> <li>• <i>Hypertension</i></li> <li>• <i>Maternal Age (derived from birthdate)</i></li> <li>• <i>Mental Health Disorder</i></li> <li>• <i>Multiple Pregnancy</i></li> <li>• <i>Neuromuscular Disease</i></li> <li>• <i>Other Pre-eclampsia</i></li> <li>• <i>Placenta Previa</i></li> <li>• <i>Placental Abruption</i></li> <li>• <i>Placental Accreta Spectrum</i></li> <li>• <i>Pre-existing Diabetes</i></li> <li>• <i>Preterm Birth</i></li> <li>• <i>Previous Cesarean</i></li> <li>• <i>Pulmonary Hypertension</i></li> <li>• <i>Renal Disease</i></li> <li>• <i>Severe Pre-eclampsia</i></li> <li>• <i>Substance Abuse</i></li> <li>• <i>Thyrotoxicosis</i></li> <li>• <i>Long-term Anticoagulant Use</i></li> <li>• <i>Obstetric VTE</i></li> </ul> <p><i>Additional variables used for risk adjustment include Lab and Physical Exam Results. Report the first resulted value 24 hours prior to start of encounter and before time of delivery in UCUM units specified:</i></p> <ul style="list-style-type: none"> <li>• <i>Heart rate: {beats}/min</i></li> <li>• <i>Systolic blood pressure: mm[Hg]</i></li> <li>• <i>White blood cell count: 10*3/uL</i></li> <li>• <i>Hematocrit: %</i></li> </ul> <p>The Severe Obstetric Complications Risk Adjustment Methodology Report is available on the eCQI Resource Center (<a href="https://ecqi.healthit.gov">https://ecqi.healthit.gov</a>).</p> |



## 2024 eCQM Flow – CMS1028v2: Severe Obstetric Complications (PC-07)\*

*\*This flow diagram represents an overview of population criteria requirements. Please refer to the eCQM measure specification for a complete list of definitions, direct reference codes, data or timing elements included in this measure and required for submission.*

### Measure Flow Narrative (Continued)

The measure flow diagram on the preceding pages illustrates the steps to determine the population criteria for this measure.

|  |   |
|--|---|
| <b>Supplemental Data Elements<br/>(Measure Specific)</b> | For every patient evaluated by this measure also identify calculated gestational age. |
|--|---|