

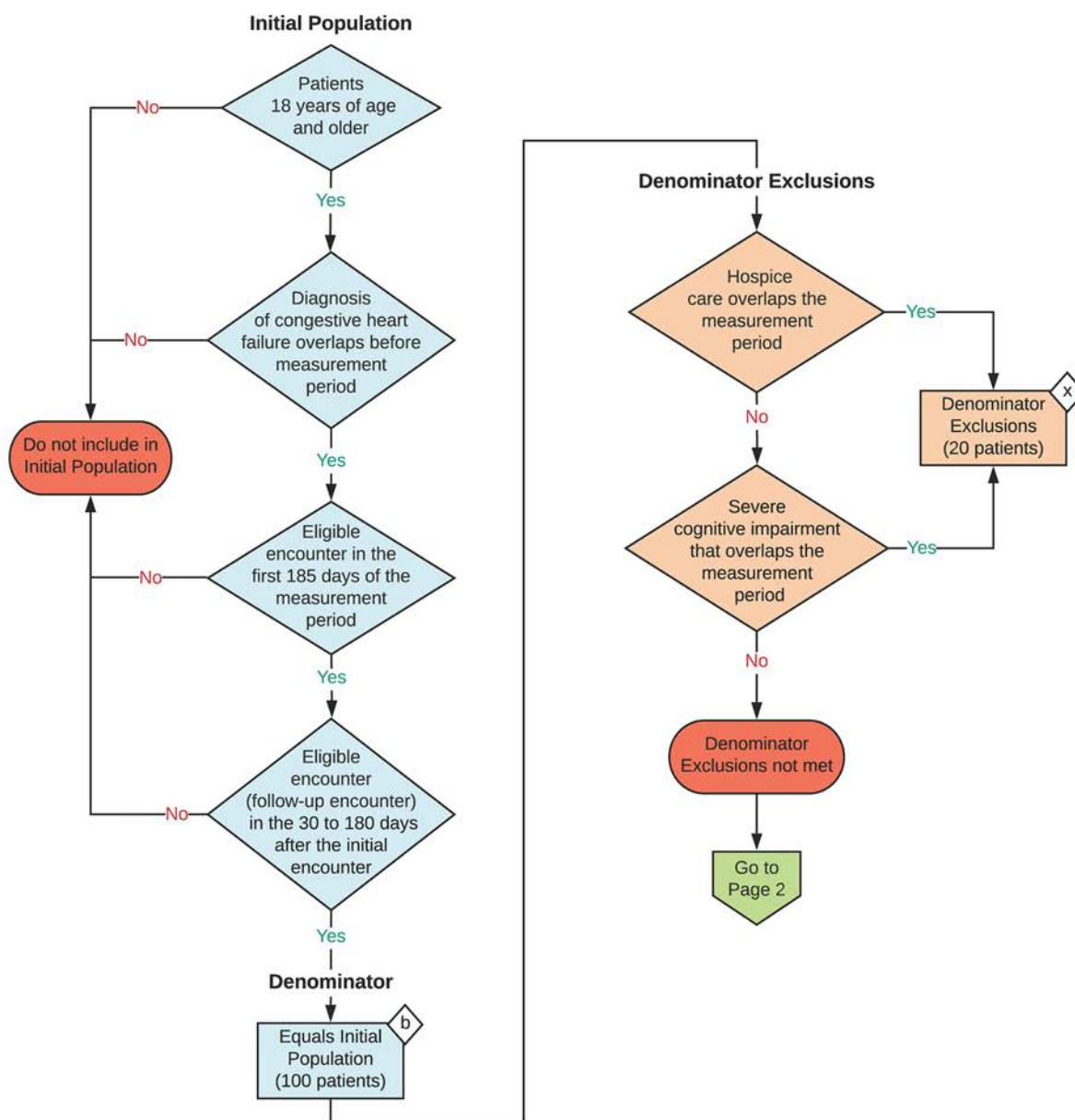
2021 eCQM Flow eCQM Identifier: CMS90v10

NOTE: This flow diagram represents an overview of population criteria requirements. Refer to the eCQM specification for a complete list of data elements included in this measure and required for submission.

Functional Status Assessments for Congestive Heart Failure

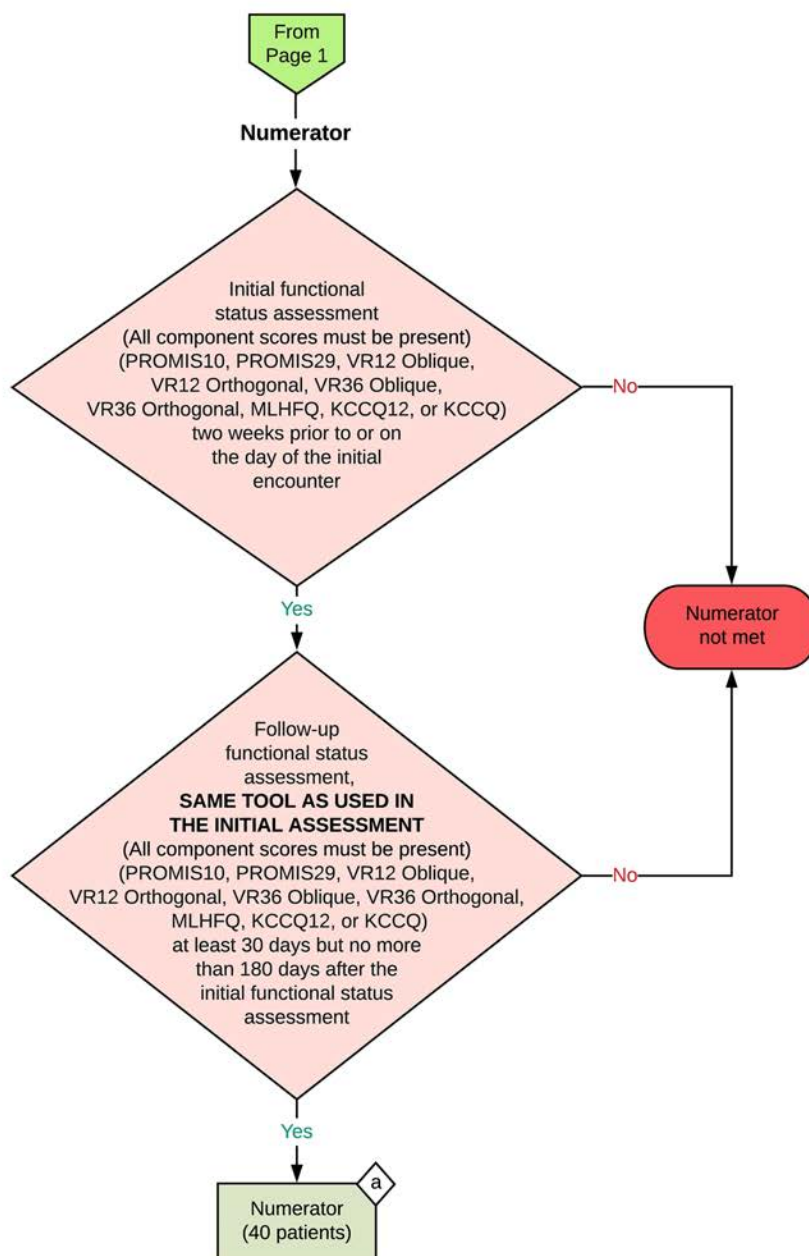
Percentage of patients 18 years of age and older with congestive heart failure who completed initial and follow-up patient-reported functional status assessments

This eCQM is a patient-based measure



2021 eCQM Flow
eCQM Identifier: CMS90v10

Functional Status Assessments for Congestive Heart Failure



Sample Calculation

Performance Rate =

Numerator (a = 40 patients)

Denominator (b = 100 patients) - Denominator Exclusions (x = 20 patients)

$$= \frac{40}{80} = 50\%$$

eCQM Identifier: CMS90v10**eCQM Title: Functional Status Assessments for Congestive Heart Failure**

NOTE: This flow diagram represents an overview of population criteria requirements. Refer to the eCQM specification for a complete list of data elements included in this measure and required for submission.

Description: Percentage of patients 18 years of age and older with congestive heart failure who completed initial and follow-up patient-reported functional status assessments.

This eCQM is a patient-based measure.

eCQM Flow Narrative**Initial Population**

Start by identifying the Initial Population, which includes patients 18 years of age and older with a diagnosis of congestive heart failure that overlaps before the measurement period, an eligible encounter in the first 185 days of the measurement period, and an eligible encounter (follow-up encounter) in the 30 to 180 days after the initial encounter.

Denominator

The Denominator equals the Initial Population. In the sample calculation provided at the end of the eCQM flow, the Denominator is equal to 100 patients.

Denominator Exclusions

The Denominator Exclusions criteria identify a subset of the Denominator population by excluding patients whose hospice care overlaps the measurement period and patients with severe cognitive impairment that overlaps the measurement period. In the sample calculation provided at the end of the eCQM flow, the Denominator Exclusions are equal to 20 patients.

Numerator

The Numerator criteria identify a subset of the Denominator population (that did not meet the Denominator Exclusions criteria) by including patients with an initial functional status assessment with all component scores present (PROMIS10, PROMIS29, VR12 Oblique, VR12 Orthogonal, VR36 Oblique, VR36 Orthogonal, MLHFQ, KCCQ12, or KCCQ) two weeks prior to or on the day of the initial encounter and a follow-up functional status assessment, using the same tool as used in the initial assessment, with all component scores present (PROMIS10, PROMIS29, VR12 Oblique, VR12 Orthogonal, VR36 Oblique, VR36 Orthogonal, MLHFQ, KCCQ12, or KCCQ), at least 30 days but no more than 180 days after the initial functional status assessment. In the sample calculation provided at the end of the eCQM flow, the Numerator is equal to 40 patients.

Sample Calculation

A sample calculation is provided to help determine how the measure performance rate is derived. The measure performance rate is calculated by dividing the Numerator (total equals 40 patients) by the difference between the Denominator (total equals 100 patients) and the Denominator Exclusions (total equals 20 patients), which is equal to a score of 50 percent.